



Trust it



**FLANGE, RACCORDI,
BLOCCHI**

FLANGES, COUPLINGS,
MANIFOLD BLOCKS



Portaci nel futuro, saremo al tuo
fianco nelle tue prossime sfide.

Trust it.

Take us to the future and we will stand
by your side as you face new challenges.

Trust it.

INDEX

FLANGE
RACCORDI
BLOCCHI

FLANGES
COUPLINGS
MANIFOLD BLOCKS

| | | |
|---------|---------|------|
| AZIENDA | COMPANY | p. 2 |
|---------|---------|------|

01

| | | |
|---|---|-------|
| FLANGE SAE | SAE FLANGES | p. 5 |
| Flange SAE filettate GAS | BSP threaded SAE flanges | p. 7 |
| Flange SAE filettate NPT | NPT threaded SAE flanges | p. 8 |
| Flange SAE a saldare di tasca | Weld in SAE flanges | p. 9 |
| Flange SAE a saldare di testa | Weld on SAE flanges | p. 10 |
| Controflangia SAE filettata GAS | BSP threaded SAE counterflanges | p. 11 |
| Controflangia SAE a saldare di tasca | Weld in SAE counterflanges | p. 12 |
| Controflangia SAE a saldare di testa | Weld on SAE counterflanges | p. 13 |
| Flange doppie SAE filettate GAS | BSP threaded double SAE flanges | p. 14 |
| Flange doppie a saldare di tasca | Weld in double flanges | p. 15 |
| Flange doppie a saldare di testa | Weld on double flanges | p. 16 |
| Flangia cieca | Blind flanges | p. 17 |
| Flange SAE filettate GAS 90° | 90° BSP threaded SAE flanges | p. 18 |
| Flange SAE filettate NPT 90° | 90° NPT threaded SAE flanges | p. 19 |
| Flange SAE a saldare di tasca a 90° | 90° weld in SAE flanges | p. 20 |
| Flange SAE a saldare di testa a 90° | 90° weld on SAE flanges | p. 21 |
| Semiflangia SAE intera | Uncut SAE split flanges | p. 22 |
| Semiflangia SAE intera con fori filettati metrici | Uncut SAE split flanges with metric threaded fixing holes | p. 23 |
| Semiflangia SAE tagliata | SAE split flanges | p. 24 |
| Codoli SAE a saldare di testa | Weld on SAE adaptors | p. 25 |
| Flangia SAE 90° - L BLOCK | SAE 90° - L BLOCK flanges | p. 26 |
| Flangia SAE riduzione 90° | 90° SAE reduction BLOCKS | p. 27 |
| Flangia SAE - T BLOCK | SAE - T BLOCK flanges | p. 28 |

02

| | | |
|-------------------------------------|-----------------------------|-------|
| RACCORDI PER POMPE AD INGRANAGGI | COUPLINGS FOR GEAR PUMPS | p. 31 |
| Raccordo versione | Coupling version | |
| RP | | p. 32 |
| RPA | | p. 33 |
| RA | | p. 34 |
| RIA | | p. 35 |
| RB | | p. 36 |
| RGAT | | p. 37 |
| RBA | | p. 38 |
| RDA | | p. 39 |
| Raccordi diritti | Straight coupling | p. 40 |
| RPGA | | p. 41 |
| RSA | | p. 42 |
| RCA | | p. 43 |

03

| | | |
|------------------|-----------------------|------------|
| BLOCCHI CETOP | CETOP MANIFOLD BLOCKS | p. 45 |
| CETOP 3 - NG 06 | | p. 46 ÷ 55 |
| CETOP 5 - NG 010 | | p. 56 ÷ 62 |
| Accessori | Accessories | p. 63 ÷ 64 |



▶ PROGETTAZIONE PROJECTS

Il moderno e qualificato ufficio tecnico progetta e sviluppa nuovi prodotti ed esegue progetti speciali su richiesta del cliente.

The modern and qualified technical Department is skilled in designing and develop new products and it is ready to support every customer's request with special solutions.



▶ QUALITÀ QUALITY

È un punto di forza di OMT Group e viene costantemente controllata nella moderna e attrezzata sala prove. OMT Group è conforme ai requisiti del Sistema Gestione Qualità ISO 9001:2015.

Is a strong point of OMT Group and it is constantly monitored in the modern and equipped test room. OMT Group complies with the requirements of the standard for the Quality Management System ISO 9001:2015.



▶ INDUSTRIA 4.0 INDUSTRY 4.0

OMT Group ha conseguito l'attestazione di conformità come industria 4.0: la nostra produzione industriale è del tutto automatizzata e interconnessa.

OMT Group obtained the certificate of conformity as Industry 4.0: our industrial production is completely automated and interconnected.



▶ MAGAZZINO WAREHOUSE

La tempestività della consegna è garantita dal magazzino di 1.800 mq e dalla gestione informatizzata.

The timeliness of the delivery is guaranteed by the warehouse of 1,800 square meters and the computerized management.



▶ OMT GROUP WORLDWIDE

La rete commerciale, preparata ed efficiente, offre un servizio ed una consulenza in tutto il mondo e in tempi rapidi.

The commercial network, prepared and efficient, offers a service and advice around the world and timely.

▶ MADE IN ITALY

L'intera gamma prodotti è realizzata internamente.

The whole product range is made in Italy.



55+

55+ ANNI / YEARS

DALL' ESPERIENZA

From expertise

OMT Group è una realtà dinamica e all'avanguardia, **forte di un'esperienza di oltre 55 anni** nel settore dell'oleodinamica.

Nel 2022 OMT Group incorpora OMT e LUEN, ne raccoglie l'esperienza e programma il cambiamento per il futuro.

OMT Group is a dynamic and modern enterprise, **with over 55 years of experience** in hydraulics.

In 2022 OMT Group combines the expertise of OMT and LUEN, using it to plan changes for the future.



ALL' INNOVAZIONE

To innovation

L'**innovazione** presuppone non solo l'aumento di spazi, il potenziamento degli impianti e dei macchinari, ma un **programma** da realizzare con un **gruppo unico, coeso**, in grado di rispondere alle richieste di un mercato in continua evoluzione.

Innovation does not just involve changing premises and upgrading plants and machinery, but also includes carrying out a **programme** as a **single, cohesive group**, able to respond to the demands of a constantly changing market.

GAMMA PRODOTTI

Products range



COMPONENTI
E ACCESSORI

COMPONENTS
AND ACCESSORIES

FILTRI
IDRAULICI

HYDRAULIC
FILTERS

SCAMBIATORI
DI CALORE

HEAT
EXCHANGERS

FLANGE
RACCORDI
BLOCCHI

FLANGES
COUPLINGS
MANIFOLD
BLOCKS

ACCUMULATORI
A SACCA, A MEMBRANA
E A PISTONE

BLADDER,
DIAPHRAGM
AND PISTON
ACCUMULATORS

VALVOLE
IDRAULICHE

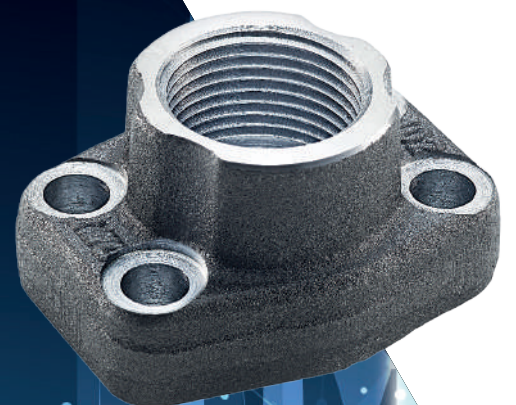
HYDRAULIC
VALVES

Realizzate in acciaio, le flange SAE possono essere filettate GAS e NPT, a saldare di tasca e di testa, normali e 90°. Analogamente per flange doppie e controflange. Flange cieche, semiflange SAE intere e tagliate, flange CETOP, codoli SAE completano la gamma.

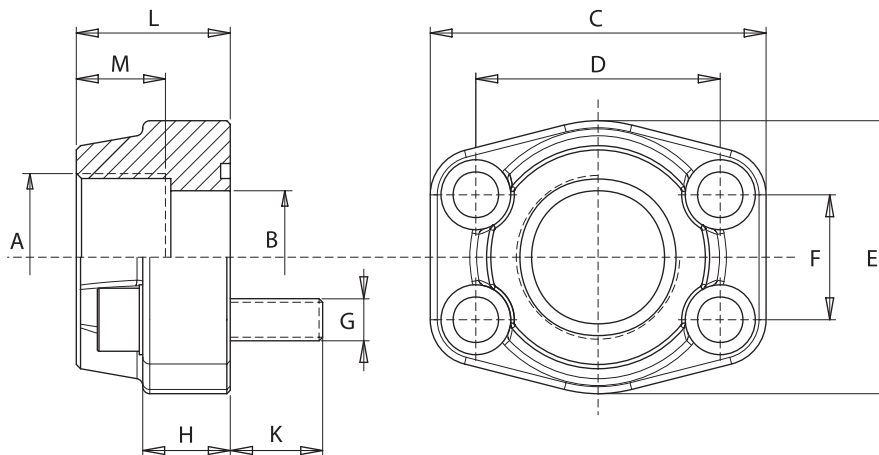
Made of steel, the SAE flanges can be threaded GAS and NPT, weld in and weld on, standard and 90°. The same for double flanges and counterflanges. Blind flanges, cut and uncut SAE split flanges, CETOP flanges, SAE adaptors complete the range.



FLANGE SAE
SAE FLANGES



Materiale: acciaio
Material: steel



3000 psi

| PRESS. MAX bar | TIPO TYPE | A SAE | B | L | H | M | K | C | D | E | F | G | | O-Rings |
|----------------|-----------|--------|-----|----|----|----|----|-----|--------|-----|-------|-------------------|-------|---------|
| | | | | | | | | | | | | Viti/Screws Metr. | UNC | |
| 345 | F080G038 | 3/8" | 13 | 36 | 16 | 13 | 14 | 58 | 38,10 | 48 | 17,48 | M8 | 5/16" | 4075 |
| 345 | F080G012 | 1/2" | 13 | 36 | 16 | 15 | 14 | 58 | 38,10 | 48 | 17,48 | M8 | 5/16" | 4075 |
| 345 | F100G034 | 3/4" | 19 | 36 | 18 | 18 | 16 | 67 | 47,63 | 50 | 22,23 | M10 | 3/8" | 4100 |
| 345 | F102G100 | 1" | 25 | 38 | 18 | 20 | 16 | 72 | 52,37 | 54 | 26,19 | M10 | 3/8" | 4131 |
| 275 | F104G114 | 1 1/4" | 31 | 41 | 21 | 22 | 18 | 81 | 58,72 | 70 | 30,18 | M10 | 7/16" | 4150 |
| 200 | F106G112 | 1 1/2" | 38 | 44 | 25 | 24 | 18 | 95 | 69,85 | 78 | 35,71 | M12 | 1/2" | 4187 |
| 200 | F108G200 | 2" | 50 | 45 | 25 | 26 | 18 | 104 | 77,77 | 90 | 42,88 | M12 | 1/2" | 4225 |
| 170 | F110G212 | 2 1/2" | 63 | 50 | 25 | 30 | 18 | 116 | 88,90 | 102 | 50,80 | M12 | 1/2" | 4275 |
| 135 | F112G300 | 3" | 73 | 50 | 27 | 30 | 25 | 136 | 106,38 | 125 | 61,93 | M16 | 5/8" | 4337 |
| 35 | F114G312 | 3 1/2" | 89 | 50 | 27 | 30 | 25 | 153 | 120,65 | 137 | 69,85 | M16 | 5/8" | 4387 |
| 35 | F116G400 | 4" | 99 | 50 | 27 | 30 | 25 | 163 | 130,18 | 147 | 77,77 | M16 | 5/8" | 4437 |
| 35 | F118G500 | 5" | 120 | 50 | 28 | 30 | 25 | 185 | 152,40 | 181 | 92,08 | M16 | 5/8" | 4537 |

6000 psi

| PRESS. MAX bar | TIPO TYPE | A SAE | B | L | H | M | K | C | D | E | F | G | | O-Rings |
|----------------|-----------|--------|----|----|----|----|----|-----|--------|-----|-------|-------------------|-------|---------|
| | | | | | | | | | | | | Viti/Screws Metr. | UNC | |
| 420 | F401G038 | 3/8" | 13 | 36 | 16 | 13 | 14 | 58 | 40,49 | 48 | 18,24 | M8 | 5/16" | 4075 |
| 420 | F401G012 | 1/2" | 13 | 36 | 16 | 15 | 14 | 58 | 40,49 | 48 | 18,24 | M8 | 5/16" | 4075 |
| 420 | F402G034 | 3/4" | 19 | 36 | 19 | 18 | 16 | 72 | 50,80 | 54 | 23,80 | M10 | 3/8" | 4100 |
| 420 | F403G100 | 1" | 25 | 44 | 24 | 20 | 19 | 81 | 57,15 | 70 | 27,76 | M12 | 7/16" | 4131 |
| 420 | F404G114 | 1 1/4" | 31 | 44 | 27 | 22 | 22 | 95 | 66,68 | 78 | 31,75 | M14 | 1/2" | 4150 |
| 420 | F405G112 | 1 1/2" | 38 | 51 | 30 | 24 | 24 | 107 | 79,38 | 90 | 36,50 | M16 | 5/8" | 4187 |
| 420 | F406G200 | 2" | 50 | 70 | 37 | 33 | 32 | 136 | 96,82 | 117 | 44,45 | M20 | 3/4" | 4225 |
| 420 | F408G212 | 2 1/2" | 63 | 75 | 45 | 35 | 40 | 167 | 123,80 | 151 | 58,70 | M24 | - | 4275 |
| 420 | F410G300 | 3" | 73 | 90 | 55 | 40 | 55 | 209 | 152,40 | 179 | 71,40 | M30 | - | 4337 |

Esempio codice di ordinazione - Ordering example

Flangia
Flange

F404 G114 -

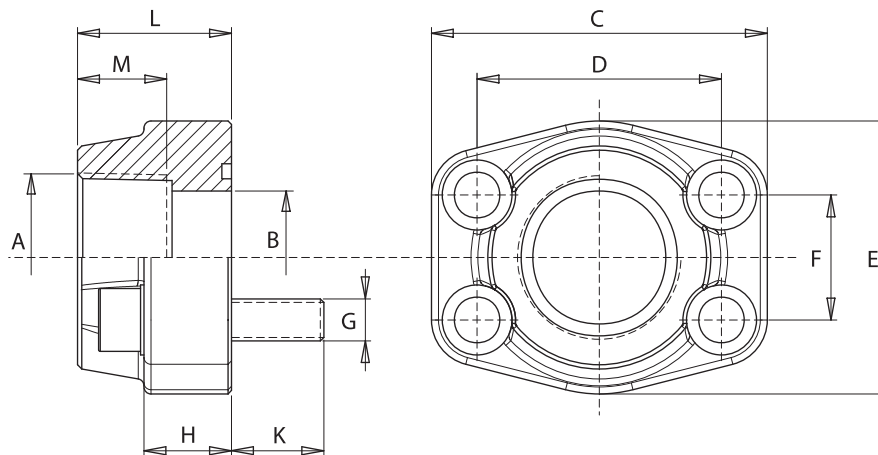
Su richiesta: - On request:

M Viti metriche, rondelle, O-Rings
Metrical screws, washers, O-Rings

U Viti UNC, rondelle, O-Rings
UNC screws, washers, O-Rings

(brunite - burnished)

Materiale: acciaio
 Material: steel



3000 psi

| PRESS. MAX bar | TIPO TYPE | A SAE | B | L | H | M | K | C | D | E | F | G | | O-Rings |
|----------------------|--------------|----------|-----|----|----|----|----|-----|--------|-----|-------|----------------------|-------|---------|
| | | | | | | | | | | | | Viti/Screws Metr. | UNC | |
| 345 | F080N038 | 3/8" | 13 | 36 | 16 | 19 | 14 | 58 | 38,10 | 48 | 17,48 | M8 | 5/16" | 4075 |
| 345 | F080N012 | 1/2" | 13 | 36 | 16 | 19 | 14 | 58 | 38,10 | 48 | 17,48 | M8 | 5/16" | 4075 |
| 345 | F100N034 | 3/4" | 19 | 36 | 18 | 19 | 16 | 67 | 47,63 | 50 | 22,23 | M10 | 3/8" | 4100 |
| 345 | F102N100 | 1" | 25 | 38 | 18 | 19 | 16 | 72 | 52,37 | 54 | 26,19 | M10 | 3/8" | 4131 |
| 275 | F104N114 | 1 1/4" | 31 | 41 | 21 | 22 | 18 | 81 | 58,72 | 70 | 30,18 | M10 | 7/16" | 4150 |
| 200 | F106N112 | 1 1/2" | 38 | 44 | 25 | 24 | 18 | 95 | 69,85 | 78 | 35,71 | M12 | 1/2" | 4187 |
| 200 | F108N200 | 2" | 50 | 45 | 25 | 26 | 18 | 104 | 77,77 | 90 | 42,88 | M12 | 1/2" | 4225 |
| 170 | F110N212 | 2 1/2" | 63 | 50 | 25 | 30 | 18 | 116 | 88,90 | 102 | 50,80 | M12 | 1/2" | 4275 |
| 135 | F112N300 | 3" | 73 | 50 | 27 | 34 | 25 | 136 | 106,38 | 125 | 61,93 | M16 | 5/8" | 4337 |
| 35 | F114N312 | 3 1/2" | 89 | 50 | 27 | 36 | 25 | 153 | 120,65 | 137 | 69,85 | M16 | 5/8" | 4387 |
| 35 | F116N400 | 4" | 99 | 50 | 27 | 36 | 25 | 163 | 130,18 | 147 | 77,77 | M16 | 5/8" | 4437 |
| 35 | F118N500 | 5" | 120 | 50 | 28 | 36 | 25 | 185 | 152,40 | 181 | 92,08 | M16 | 5/8" | 4537 |

6000 psi

| PRESS. MAX bar | TIPO TYPE | A SAE | B | L | H | M | K | C | D | E | F | G | | O-Rings |
|----------------------|--------------|----------|----|----|----|----|----|-----|--------|-----|-------|----------------------|-------|---------|
| | | | | | | | | | | | | Viti/Screws Metr. | UNC | |
| 420 | F401N038 | 3/8" | 13 | 36 | 16 | 19 | 14 | 58 | 40,49 | 48 | 18,24 | M8 | 5/16" | 4075 |
| 420 | F401N012 | 1/2" | 13 | 36 | 16 | 19 | 14 | 58 | 40,49 | 48 | 18,24 | M8 | 5/16" | 4075 |
| 420 | F402N034 | 3/4" | 19 | 36 | 19 | 22 | 16 | 72 | 50,80 | 54 | 23,80 | M10 | 3/8" | 4100 |
| 420 | F403N100 | 1" | 25 | 44 | 24 | 24 | 19 | 81 | 57,15 | 70 | 27,76 | M12 | 7/16" | 4131 |
| 420 | F404N114 | 1 1/4" | 31 | 44 | 27 | 25 | 22 | 95 | 66,68 | 78 | 31,75 | M14 | 1/2" | 4150 |
| 420 | F405N112 | 1 1/2" | 38 | 51 | 30 | 28 | 24 | 107 | 79,38 | 90 | 36,50 | M16 | 5/8" | 4187 |
| 420 | F406N200 | 2" | 50 | 70 | 37 | 33 | 32 | 136 | 96,82 | 117 | 44,45 | M20 | 3/4" | 4225 |
| 420 | F408N212 | 2 1/2" | 63 | 75 | 45 | 35 | 40 | 167 | 123,80 | 151 | 58,70 | M24 | - | 4275 |
| 420 | F410N300 | 3" | 73 | 90 | 55 | 40 | 55 | 209 | 152,40 | 179 | 71,40 | M30 | - | 4337 |

Esempio codice di ordinazione - Ordering example

Flangia
 Flange

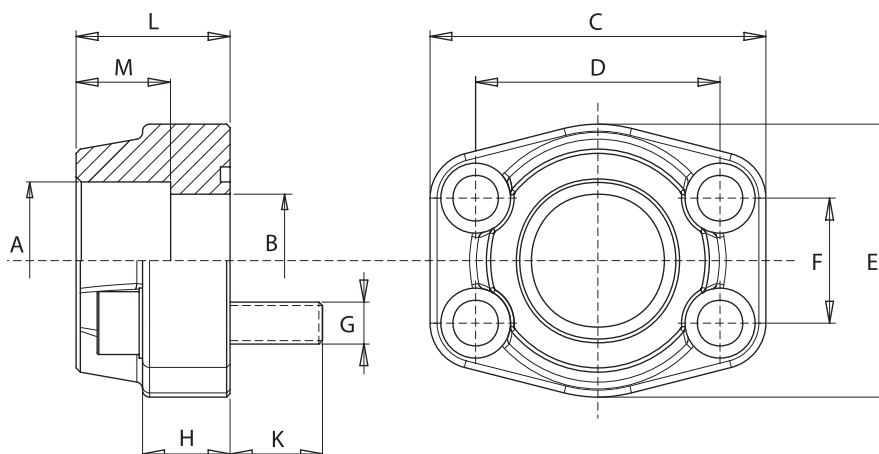
F404 N114 -

M Viti metriche, rondelle, O-Rings
 Metrical screws, washers, O-Rings

U Viti UNC, rondelle, O-Rings
 UNC screws, washers, O-Rings

(brunite - burnished)

Materiale: acciaio
Material: steel



3000 psi

| PRESS. MAX bar | TIPO TYPE | A | S.A.E. | B | L | H | M | K | C | D | E | F | G | | O-Rings |
|----------------|-----------|-------|--------|-----|----|----|----|----|-----|--------|-----|-------|-------------|---------|---------|
| | | | | | | | | | | | | | Viti/Screws | O-Rings | |
| | | | | | | | | | | | | | Metr. | UNC | |
| 345 | FS080038 | 17,5 | 3/8" | 13 | 36 | 16 | 18 | 14 | 58 | 38,10 | 48 | 17,48 | M8 | 5/16" | 4075 |
| 345 | FS080012 | 21,6 | 1/2" | 13 | 36 | 16 | 18 | 14 | 58 | 38,10 | 48 | 17,48 | M8 | 5/16" | 4075 |
| 345 | FS100034 | 27,2 | 3/4" | 19 | 36 | 18 | 18 | 16 | 67 | 47,63 | 50 | 22,23 | M10 | 3/8" | 4100 |
| 345 | FS102100 | 34,1 | 1" | 25 | 38 | 18 | 18 | 16 | 71 | 52,37 | 54 | 26,19 | M10 | 3/8" | 4131 |
| 275 | FS104114 | 42,8 | 1 1/4" | 31 | 41 | 21 | 20 | 18 | 81 | 58,72 | 70 | 30,18 | M10 | 7/16" | 4150 |
| 200 | FS106112 | 48,6 | 1 1/2" | 38 | 44 | 25 | 22 | 18 | 95 | 69,85 | 78 | 35,71 | M12 | 1/2" | 4187 |
| 200 | FS108200 | 61 | 2" | 50 | 45 | 25 | 24 | 18 | 104 | 77,77 | 90 | 42,88 | M12 | 1/2" | 4225 |
| 170 | FS110212 | 76,6 | 2 1/2" | 63 | 50 | 25 | 28 | 18 | 116 | 88,90 | 102 | 50,80 | M12 | 1/2" | 4275 |
| 135 | FS112300 | 90,5 | 3" | 73 | 50 | 27 | 28 | 25 | 136 | 106,38 | 125 | 61,93 | M16 | 5/8" | 4337 |
| 35 | FS114312 | 103 | 3 1/2" | 89 | 50 | 27 | 28 | 25 | 154 | 120,65 | 138 | 69,85 | M16 | 5/8" | 4387 |
| 35 | FS116400 | 115,5 | 4" | 99 | 50 | 27 | 28 | 25 | 164 | 130,18 | 148 | 77,77 | M16 | 5/8" | 4437 |
| 35 | FS118500 | 142 | 5" | 120 | 50 | 28 | 28 | 25 | 185 | 152,40 | 181 | 92,08 | M16 | 5/8" | 4537 |

6000 psi

| PRESS. MAX bar | TIPO TYPE | A | S.A.E. | B | L | H | M | K | C | D | E | F | G | | O-Rings |
|----------------|-----------|------|--------|----|----|----|----|----|-----|--------|-----|-------|-------------|---------|---------|
| | | | | | | | | | | | | | Viti/Screws | O-Rings | |
| | | | | | | | | | | | | | Metr. | UNC | |
| 420 | FS401038 | 17,5 | 3/8" | 13 | 36 | 16 | 18 | 14 | 58 | 40,49 | 48 | 18,24 | M8 | 5/16" | 4075 |
| 420 | FS401012 | 21,6 | 1/2" | 13 | 36 | 16 | 18 | 14 | 58 | 40,49 | 48 | 18,24 | M8 | 5/16" | 4075 |
| 420 | FS402034 | 27,2 | 3/4" | 19 | 36 | 19 | 20 | 16 | 72 | 50,80 | 54 | 23,80 | M10 | 3/8" | 4100 |
| 420 | FS403100 | 34,1 | 1" | 25 | 44 | 24 | 22 | 19 | 81 | 57,15 | 67 | 27,76 | M12 | 7/16" | 4131 |
| 420 | FS404114 | 42,8 | 1 1/4" | 31 | 44 | 27 | 22 | 22 | 95 | 66,68 | 78 | 31,75 | M14 | 1/2" | 4150 |
| 420 | FS405112 | 48,6 | 1 1/2" | 38 | 51 | 30 | 24 | 24 | 107 | 79,38 | 90 | 36,50 | M16 | 5/8" | 4187 |
| 420 | FS406200 | 61 | 2" | 50 | 70 | 37 | 25 | 32 | 136 | 96,82 | 117 | 44,45 | M20 | 3/4" | 4225 |
| 420 | FS408212 | 76,6 | 2 1/2" | 63 | 75 | 45 | 28 | 40 | 167 | 123,80 | 151 | 58,70 | M24 | - | 4275 |
| 420 | FS410300 | 90,5 | 3" | 73 | 90 | 55 | 30 | 55 | 209 | 152,40 | 179 | 71,40 | M30 | - | 4337 |

Esempio codice di ordinazione - Ordering example

Flangia
Flange

FS 108 200 -

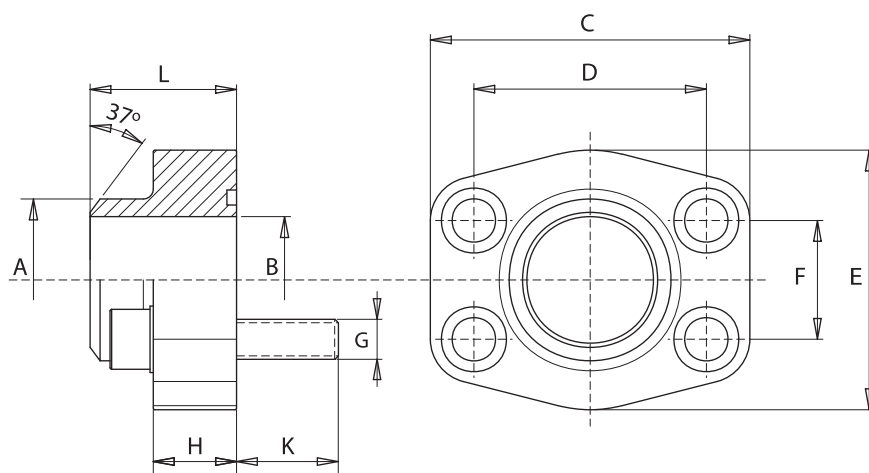
M Viti metriche, rondelle, O-Rings
Metrical screws, washers, O-Rings

U Viti UNC, rondelle, O-Rings
UNC screws, washers, O-Rings

(brunite - burnished)

Su richiesta: - On request:

Materiale: acciaio
 Material: steel



3000 psi

| PRESS. MAX bar | TIPO TYPE | A | S.A.E. | B | L | H | K | C | D | E | F | G | | O-Rings |
|----------------|-----------|------|--------|-----|----|----|----|-----|--------|-----|-------|-------------------|-------|---------|
| | | | | | | | | | | | | Viti/Screws Metr. | UNC | |
| 345 | FT080012 | 21,6 | 1/2" | 13 | 36 | 16 | 14 | 58 | 38,10 | 48 | 17,48 | M8 | 5/16" | 4075 |
| 345 | FT100034 | 27,2 | 3/4" | 19 | 36 | 18 | 16 | 67 | 47,63 | 50 | 22,23 | M10 | 3/8" | 4100 |
| 345 | FT102100 | 34,5 | 1" | 25 | 38 | 18 | 16 | 71 | 52,37 | 54 | 26,19 | M10 | 3/8" | 4131 |
| 275 | FT104114 | 42,8 | 1 1/4" | 31 | 41 | 21 | 18 | 81 | 58,72 | 70 | 30,18 | M10 | 7/16" | 4150 |
| 200 | FT106112 | 48,6 | 1 1/2" | 38 | 44 | 25 | 18 | 95 | 69,85 | 78 | 35,71 | M12 | 1/2" | 4187 |
| 200 | FT108200 | 61 | 2" | 50 | 45 | 25 | 18 | 104 | 77,77 | 90 | 42,88 | M12 | 1/2" | 4225 |
| 170 | FT110212 | 76,6 | 2 1/2" | 63 | 50 | 25 | 18 | 116 | 88,90 | 102 | 50,80 | M12 | 1/2" | 4275 |
| 135 | FT112300 | 89 | 3" | 73 | 50 | 27 | 25 | 136 | 106,38 | 125 | 61,93 | M16 | 5/8" | 4337 |
| 35 | FT114312 | 103 | 3 1/2" | 89 | 50 | 27 | 25 | 154 | 120,65 | 138 | 69,85 | M16 | 5/8" | 4387 |
| 35 | FT116400 | 115 | 4" | 99 | 50 | 27 | 25 | 164 | 130,18 | 148 | 77,77 | M16 | 5/8" | 4437 |
| 35 | FT118500 | 141 | 5" | 120 | 50 | 28 | 25 | 185 | 152,40 | 181 | 92,08 | M16 | 5/8" | 4537 |

6000 psi

| PRESS. MAX bar | TIPO TYPE | A | S.A.E. | B | L | H | K | C | D | E | F | G | | O-Rings |
|----------------|-----------|------|--------|----|----|----|----|-----|--------|-----|-------|-------------------|-------|---------|
| | | | | | | | | | | | | Viti/Screws Metr. | UNC | |
| 420 | FT401038 | 17,5 | 3/8" | 10 | 36 | 18 | 14 | 58 | 40,49 | 48 | 18,24 | M8 | 5/16" | 4075 |
| 420 | FT401012 | 21,6 | 1/2" | 13 | 36 | 18 | 14 | 58 | 40,49 | 48 | 18,24 | M8 | 5/16" | 4075 |
| 420 | FT402034 | 27,2 | 3/4" | 18 | 36 | 18 | 16 | 72 | 50,80 | 54 | 23,80 | M10 | 3/8" | 4100 |
| 420 | FT403100 | 34,5 | 1" | 22 | 44 | 24 | 19 | 81 | 57,15 | 67 | 27,76 | M12 | 7/16" | 4131 |
| 420 | FT404114 | 42,8 | 1 1/4" | 28 | 44 | 25 | 22 | 95 | 66,68 | 78 | 31,75 | M14 | 1/2" | 4150 |
| 420 | FT405112 | 48,6 | 1 1/2" | 32 | 51 | 29 | 24 | 107 | 79,38 | 90 | 36,50 | M16 | 5/8" | 4187 |
| 420 | FT406200 | 61 | 2" | 41 | 70 | 35 | 32 | 136 | 96,82 | 117 | 44,45 | M20 | 3/4" | 4225 |
| 420 | FT408212 | 76,6 | 2 1/2" | 50 | 75 | 45 | 40 | 167 | 123,80 | 151 | 58,70 | M24 | - | 4275 |
| 420 | FT410300 | 90 | 3" | 58 | 90 | 55 | 55 | 209 | 152,40 | 179 | 71,40 | M30 | - | 4337 |

Esempio codice di ordinazione - Ordering example

Flangia
Flange

FT404 114 -

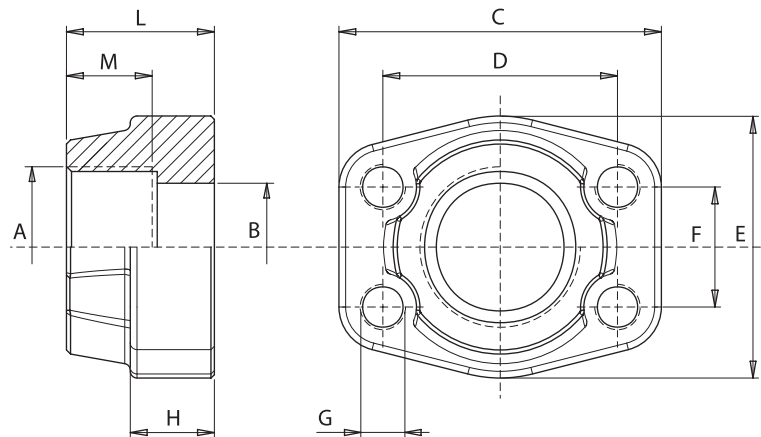
Su richiesta: - On request:

M Viti metriche, rondelle, O-Rings
Metrical screws, washers, O-Rings

U Viti UNC, rondelle, O-Rings
UNC screws, washers, O-Rings

(brunite - burnished)

Materiale: acciaio
 Material: steel



3000 psi

| PRESS. MAX bar | TIPO TYPE | A SAE | B | L | H | M | C | D | E | F | G | |
|----------------|------------|--------|-----|----|----|----|-----|--------|-----|-------|-------|-------|
| | | | | | | | | | | | Metr. | UNC |
| 345 | CFM080G038 | 3/8" | 13 | 36 | 16 | 19 | 58 | 38,10 | 48 | 17,48 | M8 | 5/16" |
| 345 | CFM080G012 | 1/2" | 13 | 36 | 16 | 19 | 58 | 38,10 | 48 | 17,48 | M8 | 5/16" |
| 345 | CFM100G034 | 3/4" | 19 | 36 | 18 | 19 | 67 | 47,63 | 50 | 22,23 | M10 | 3/8" |
| 345 | CFM102G100 | 1" | 25 | 38 | 18 | 19 | 72 | 52,37 | 54 | 26,19 | M10 | 3/8" |
| 275 | CFM104G114 | 1 1/4" | 31 | 41 | 21 | 22 | 81 | 58,72 | 70 | 30,18 | M10 | 7/16" |
| 200 | CFM106G112 | 1 1/2" | 38 | 44 | 25 | 24 | 95 | 69,85 | 78 | 35,71 | M12 | 1/2" |
| 200 | CFM108G200 | 2" | 50 | 45 | 25 | 26 | 104 | 77,77 | 90 | 42,88 | M12 | 1/2" |
| 170 | CFM110G212 | 2 1/2" | 63 | 50 | 25 | 30 | 116 | 88,90 | 102 | 50,80 | M12 | 1/2" |
| 135 | CFM112G300 | 3" | 73 | 50 | 27 | 34 | 136 | 106,38 | 125 | 61,93 | M16 | 5/8" |
| 35 | CFM114G312 | 3 1/2" | 89 | 50 | 27 | 27 | 153 | 120,65 | 137 | 69,85 | M16 | 5/8" |
| 35 | CFM116G400 | 4" | 99 | 50 | 27 | 30 | 163 | 130,18 | 147 | 77,77 | M16 | 5/8" |
| 35 | CFM118G500 | 5" | 120 | 50 | 28 | 30 | 185 | 152,40 | 181 | 92,08 | M16 | 5/8" |

6000 psi

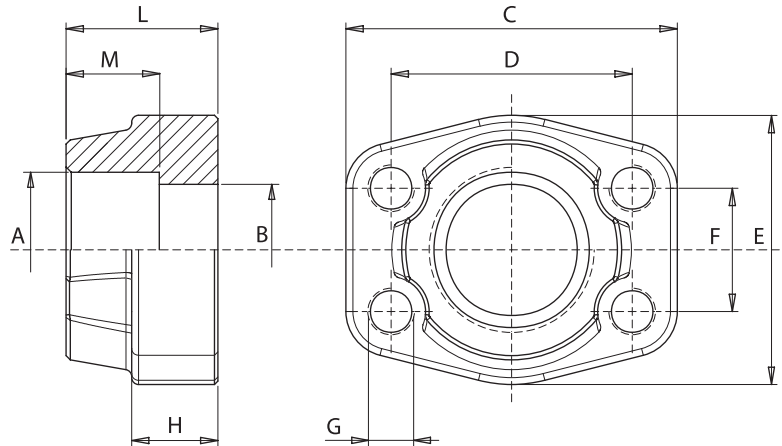
| PRESS. MAX bar | TIPO TYPE | A SAE | B | L | H | M | C | D | E | F | G | |
|----------------|------------|--------|----|----|----|----|-----|--------|-----|-------|-------|-------|
| | | | | | | | | | | | Metr. | UNC |
| 420 | CFM401G038 | 3/8" | 13 | 36 | 16 | 19 | 58 | 40,49 | 48 | 18,24 | M8 | 5/16" |
| 420 | CFM401G012 | 1/2" | 13 | 36 | 16 | 19 | 58 | 40,49 | 48 | 18,24 | M8 | 5/16" |
| 420 | CFM402G034 | 3/4" | 19 | 36 | 19 | 22 | 72 | 50,80 | 54 | 23,80 | M10 | 3/8" |
| 420 | CFM403G100 | 1" | 25 | 44 | 24 | 24 | 81 | 57,15 | 70 | 27,76 | M12 | 7/16" |
| 420 | CFM404G114 | 1 1/4" | 31 | 44 | 27 | 25 | 95 | 66,68 | 78 | 31,75 | M14 | 1/2" |
| 420 | CFM405G112 | 1 1/2" | 38 | 51 | 30 | 28 | 107 | 79,38 | 90 | 36,50 | M16 | 5/8" |
| 420 | CFM406G200 | 2" | 50 | 70 | 37 | 33 | 136 | 96,82 | 117 | 44,45 | M20 | 3/4" |
| 420 | CFM408G212 | 2 1/2" | 63 | 75 | 45 | 35 | 167 | 123,80 | 151 | 58,70 | M24 | - |
| 420 | CFM410G300 | 3" | 73 | 90 | 55 | 40 | 209 | 152,40 | 179 | 71,40 | M30 | - |

Esempio codice di ordinazione - Ordering example

CFM404 G114
 Controflangia / Counterflange

M Fori fissaggio filettati metrici / Metric tapholes
U Fori fissaggio filettati UNC / UNC tapholes

Materiale: acciaio
 Material: steel



3000 psi

| PRESS. MAX bar | TIPO TYPE | S.A.E. | A | B | L | H | M | C | D | E | F | G | |
|----------------------|--------------|--------|-------|-----|----|----|----|-----|--------|-----|-------|-------|-------|
| | | | | | | | | | | | | Metr. | UNC |
| 345 | CFSM080038 | 3/8" | 17,5 | 13 | 36 | 16 | 18 | 58 | 38,10 | 48 | 17,48 | M8 | 5/16" |
| 345 | CFSM080012 | 1/2" | 21,6 | 13 | 36 | 16 | 18 | 58 | 38,10 | 48 | 17,48 | M8 | 5/16" |
| 345 | CFSM100034 | 3/4" | 27,2 | 19 | 36 | 18 | 18 | 67 | 47,63 | 50 | 22,23 | M10 | 3/8" |
| 345 | CFSM102100 | 1" | 34,1 | 25 | 38 | 18 | 18 | 72 | 52,37 | 54 | 26,19 | M10 | 3/8" |
| 275 | CFSM104114 | 1 1/4" | 42,8 | 31 | 41 | 21 | 20 | 81 | 58,72 | 70 | 30,18 | M10 | 7/16" |
| 200 | CFSM106112 | 1 1/2" | 48,6 | 38 | 44 | 25 | 22 | 95 | 69,85 | 78 | 35,71 | M12 | 1/2" |
| 200 | CFSM108200 | 2" | 61 | 50 | 45 | 25 | 24 | 104 | 77,77 | 90 | 42,88 | M12 | 1/2" |
| 170 | CFSM110212 | 2 1/2" | 76,6 | 63 | 50 | 25 | 28 | 116 | 88,90 | 102 | 50,80 | M12 | 1/2" |
| 135 | CFSM112300 | 3" | 90,5 | 73 | 50 | 27 | 28 | 136 | 106,38 | 125 | 61,93 | M16 | 5/8" |
| 35 | CFSM114312 | 3 1/2" | 103 | 89 | 50 | 27 | 28 | 153 | 120,65 | 137 | 69,85 | M16 | 5/8" |
| 35 | CFSM116400 | 4" | 115,5 | 99 | 50 | 27 | 28 | 163 | 130,18 | 147 | 77,77 | M16 | 5/8" |
| 35 | CFSM118500 | 5" | 142 | 120 | 50 | 28 | 28 | 185 | 152,40 | 181 | 92,08 | M16 | 5/8" |

6000 psi

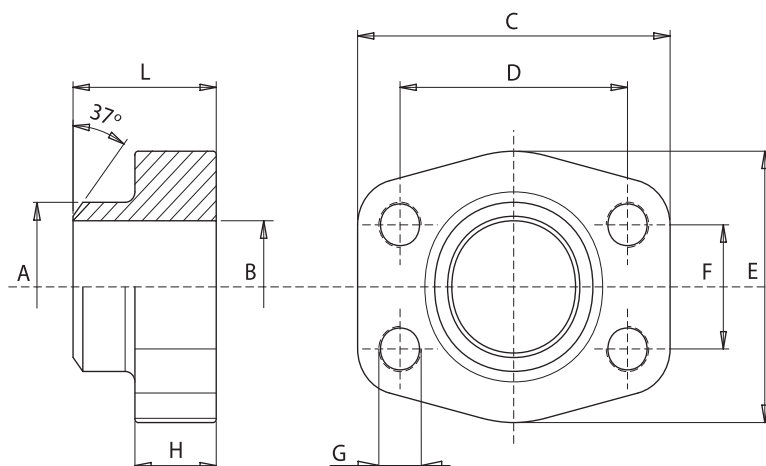
| PRESS. MAX bar | TIPO TYPE | S.A.E. | A | B | L | H | M | C | D | E | F | G | |
|----------------------|--------------|--------|------|----|----|----|----|-----|--------|-----|-------|-------|-------|
| | | | | | | | | | | | | Metr. | UNC |
| 420 | CFSM401038 | 3/8" | 17,5 | 13 | 36 | 16 | 18 | 58 | 40,49 | 48 | 18,24 | M8 | 5/16" |
| 420 | CFSM401012 | 1/2" | 21,6 | 13 | 36 | 16 | 18 | 58 | 40,49 | 48 | 18,24 | M8 | 5/16" |
| 420 | CFSM402034 | 3/4" | 27,2 | 19 | 36 | 19 | 20 | 72 | 50,80 | 54 | 23,80 | M10 | 3/8" |
| 420 | CFSM403100 | 1" | 34,1 | 25 | 44 | 24 | 22 | 81 | 57,15 | 68 | 27,76 | M12 | 7/16" |
| 420 | CFSM404114 | 1 1/4" | 42,8 | 31 | 44 | 27 | 22 | 95 | 66,68 | 78 | 31,75 | M14 | 1/2" |
| 420 | CFSM405112 | 1 1/2" | 48,6 | 38 | 51 | 30 | 24 | 107 | 79,38 | 90 | 36,50 | M16 | 5/8" |
| 420 | CFSM406200 | 2" | 61 | 50 | 70 | 37 | 25 | 136 | 96,82 | 117 | 44,45 | M20 | 3/4" |
| 420 | CFSM408212 | 2 1/2" | 76,6 | 63 | 75 | 45 | 28 | 167 | 123,80 | 151 | 58,70 | M24 | - |
| 420 | CFSM410300 | 3" | 90,5 | 73 | 90 | 55 | 30 | 209 | 152,40 | 179 | 71,40 | M30 | - |

Esempio codice di ordinazione - Ordering example

CFSM404 114
 Controflangia / Counterflange

M Fori fissaggio filettati metrici / Metric tapholes
U Fori fissaggio filettati UNC / UNC tapholes

Materiale: acciaio
 Material: steel



3000 psi

| PRESS. MAX bar | TIPO TYPE | S.A.E. | A | B | L | H | C | D | E | F | G | |
|----------------|------------|--------|------|-----|----|----|-----|--------|-----|-------|-------|-------|
| | | | | | | | | | | | Metr. | UNC |
| 345 | CFTM080012 | 1/2" | 21,6 | 13 | 36 | 16 | 58 | 38,10 | 48 | 17,48 | M8 | 5/16" |
| 345 | CFTM100034 | 3/4" | 27,2 | 19 | 36 | 18 | 67 | 47,63 | 50 | 22,23 | M10 | 3/8" |
| 345 | CFTM102100 | 1" | 34,5 | 25 | 38 | 18 | 72 | 52,37 | 54 | 26,19 | M10 | 3/8" |
| 275 | CFTM104114 | 1 1/4" | 42,8 | 31 | 41 | 21 | 81 | 58,72 | 70 | 30,18 | M10 | 7/16" |
| 200 | CFTM106112 | 1 1/2" | 48,6 | 38 | 44 | 25 | 95 | 69,85 | 78 | 35,71 | M12 | 1/2" |
| 200 | CFTM108200 | 2" | 61 | 50 | 45 | 25 | 104 | 77,77 | 90 | 42,88 | M12 | 1/2" |
| 170 | CFTM110212 | 2 1/2" | 76,6 | 63 | 50 | 25 | 116 | 88,90 | 102 | 50,80 | M12 | 1/2" |
| 135 | CFTM112300 | 3" | 89 | 73 | 50 | 27 | 136 | 106,38 | 125 | 61,93 | M16 | 5/8" |
| 35 | CFTM114312 | 3 1/2" | 103 | 89 | 50 | 27 | 153 | 120,65 | 137 | 69,85 | M16 | 5/8" |
| 35 | CFTM116400 | 4" | 115 | 99 | 50 | 27 | 163 | 130,18 | 147 | 77,77 | M16 | 5/8" |
| 35 | CFTM118500 | 5" | 141 | 120 | 50 | 28 | 185 | 152,40 | 181 | 92,08 | M16 | 5/8" |

6000 psi

| PRESS. MAX bar | TIPO TYPE | S.A.E. | A | B | L | H | C | D | E | F | G | |
|----------------|------------|--------|-------|----|----|----|-----|--------|-----|-------|-------|-------|
| | | | | | | | | | | | Metr. | UNC |
| 420 | CFTM401038 | 3/8" | 17,5 | 10 | 36 | 16 | 58 | 40,49 | 48 | 18,24 | M8 | 5/16" |
| 420 | CFTM401012 | 1/2" | 21,6 | 13 | 36 | 16 | 58 | 40,49 | 48 | 18,24 | M8 | 5/16" |
| 420 | CFTM402034 | 3/4" | 27,2 | 18 | 36 | 19 | 72 | 50,80 | 54 | 23,80 | M10 | 3/8" |
| 420 | CFTM403100 | 1" | 34,51 | 22 | 44 | 24 | 81 | 57,15 | 68 | 27,76 | M12 | 7/16" |
| 420 | CFTM404114 | 1 1/4" | 42,8 | 28 | 44 | 27 | 95 | 66,68 | 78 | 31,75 | M14 | 1/2" |
| 420 | CFTM405112 | 1 1/2" | 48,6 | 32 | 51 | 30 | 107 | 79,38 | 90 | 36,50 | M16 | 5/8" |
| 420 | CFTM406200 | 2" | 61 | 41 | 70 | 37 | 136 | 96,82 | 117 | 44,45 | M20 | 3/4" |
| 420 | CFTM408212 | 2 1/2" | 76,6 | 50 | 75 | 45 | 167 | 123,80 | 151 | 58,70 | M24 | - |
| 420 | CFTM410300 | 3" | 90,5 | 58 | 90 | 55 | 209 | 152,40 | 179 | 71,40 | M30 | - |

Esempio codice di ordinazione - *Ordering example*

CFTM404 114

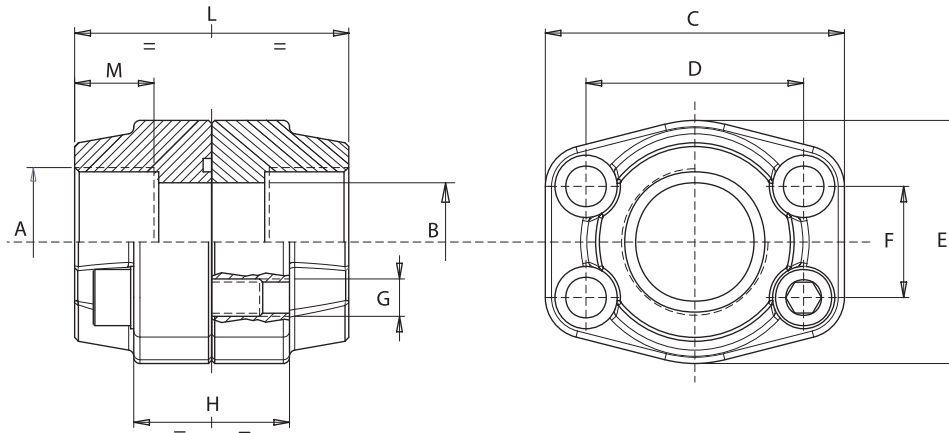
Controflangia / Counterflange

M Fori fissaggio filettati metrici / Metric tapholes

U Fori fissaggio filettati UNC / UNC tapholes

FLANGE DOPPIE SAE FILETTATE GAS BSP THREADED DOUBLE SAE FLANGES

Materiale: acciaio
Material: steel



3000 psi

| PRESS. MAX bar | TIPO TYPE | A SAE | B | L | H | M | C | D | E | F | G Viti/Screws | | O-Rings |
|----------------------|--------------|----------|-----|-----|----|----|-----|--------|-----|-------|------------------|-------|---------|
| | | | | | | | | | | | Metr. | UNC | |
| 345 | DF080G038 | 3/8" | 13 | 72 | 32 | 19 | 58 | 38,10 | 48 | 17,48 | M8 | 5/16" | 4075 |
| 345 | DF080G012 | 1/2" | 13 | 72 | 32 | 19 | 58 | 38,10 | 48 | 17,48 | M8 | 5/16" | 4075 |
| 345 | DF100G034 | 3/4" | 19 | 72 | 36 | 19 | 67 | 47,63 | 50 | 22,23 | M10 | 3/8" | 4100 |
| 345 | DF102G100 | 1" | 25 | 76 | 36 | 19 | 72 | 52,37 | 54 | 26,19 | M10 | 3/8" | 4131 |
| 275 | DF104G114 | 1 1/4" | 31 | 82 | 42 | 22 | 81 | 58,72 | 70 | 30,18 | M10 | 7/16" | 4150 |
| 200 | DF106G112 | 1 1/2" | 38 | 88 | 50 | 24 | 95 | 69,85 | 78 | 35,71 | M12 | 1/2" | 4187 |
| 200 | DF108G200 | 2" | 50 | 90 | 50 | 26 | 104 | 77,77 | 90 | 42,88 | M12 | 1/2" | 4225 |
| 170 | DF110G212 | 2 1/2" | 63 | 100 | 50 | 30 | 116 | 88,90 | 102 | 50,80 | M12 | 1/2" | 4275 |
| 135 | DF112G300 | 3" | 73 | 100 | 54 | 34 | 136 | 106,38 | 125 | 61,93 | M16 | 5/8" | 4337 |
| 35 | DF114G312 | 3 1/2" | 89 | 100 | 54 | 27 | 153 | 120,65 | 137 | 69,85 | M16 | 5/8" | 4387 |
| 35 | DF116G400 | 4" | 99 | 100 | 54 | 30 | 163 | 130,18 | 147 | 77,77 | M16 | 5/8" | 4437 |
| 35 | DF118G500 | 5" | 120 | 100 | 56 | 30 | 185 | 152,40 | 181 | 92,08 | M16 | 5/8" | 4537 |

6000 psi

| PRESS. MAX bar | TIPO TYPE | A SAE | B | L | H | M | C | D | E | F | G Viti/Screws | | O-Rings |
|----------------------|--------------|----------|----|-----|-----|----|-----|--------|-----|-------|------------------|-------|---------|
| | | | | | | | | | | | Metr. | UNC | |
| 420 | DF401G038 | 3/8" | 13 | 72 | 32 | 19 | 58 | 40,49 | 48 | 18,24 | M8 | 5/16" | 4075 |
| 420 | DF401G012 | 1/2" | 13 | 72 | 32 | 19 | 58 | 40,49 | 48 | 18,24 | M8 | 5/16" | 4075 |
| 420 | DF402G034 | 3/4" | 19 | 72 | 38 | 22 | 72 | 50,80 | 54 | 23,80 | M10 | 3/8" | 4100 |
| 420 | DF403G100 | 1" | 25 | 88 | 48 | 24 | 81 | 57,15 | 70 | 27,76 | M12 | 7/16" | 4131 |
| 420 | DF404G114 | 1 1/4" | 31 | 88 | 54 | 25 | 95 | 66,68 | 78 | 31,75 | M14 | 1/2" | 4150 |
| 420 | DF405G112 | 1 1/2" | 38 | 102 | 60 | 28 | 107 | 79,38 | 90 | 36,50 | M16 | 5/8" | 4187 |
| 420 | DF406G200 | 2" | 50 | 140 | 74 | 33 | 136 | 96,82 | 117 | 44,45 | M20 | 3/4" | 4225 |
| 420 | DF408G212 | 2 1/2" | 63 | 150 | 90 | 35 | 167 | 123,80 | 151 | 58,70 | M24 | - | 4275 |
| 420 | DF410G300 | 3" | 73 | 180 | 110 | 40 | 209 | 152,40 | 179 | 71,40 | M30 | - | 4337 |

Esempio codice di ordinazione - Ordering example

DF 404 G114 -

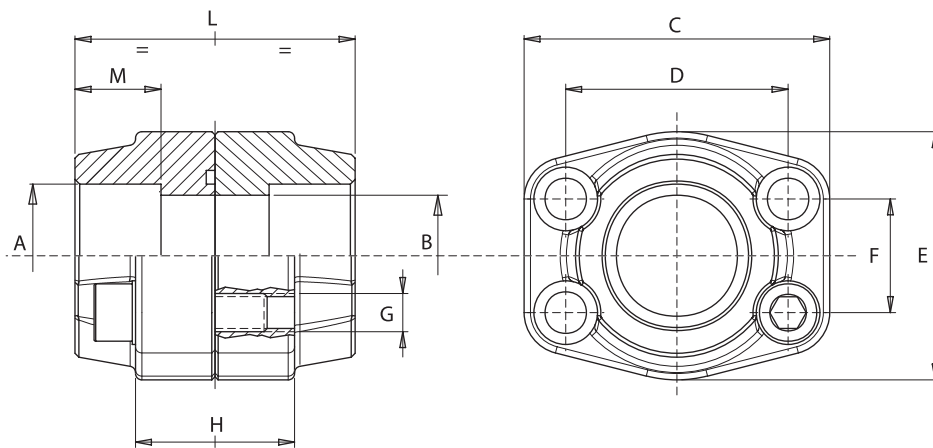
Flangia
Flange

M Viti metriche, rondelle, O-Rings
Metrical screws, washers, O-Rings

U Viti UNC, rondelle, O-Rings
UNC screws, washers, O-Rings

(brunite - burnished)

Materiale: acciaio
 Material: steel



3000 psi

| PRESS. MAX bar | TIPO TYPE | S.A.E. | A | B | L | H | M | C | D | E | F | G | | O-Rings |
|----------------|-----------|--------|-------|-----|-----|----|----|-----|--------|-----|-------|-------------------|-------|---------|
| | | | | | | | | | | | | Viti/Screws Metr. | UNC | |
| 345 | DFS080038 | 3/8" | 17,5 | 13 | 72 | 32 | 18 | 58 | 38,10 | 48 | 17,48 | M8 | 5/16" | 4075 |
| 345 | DFS080012 | 1/2" | 21,6 | 13 | 72 | 32 | 18 | 58 | 38,10 | 48 | 17,48 | M8 | 5/16" | 4075 |
| 345 | DFS100034 | 3/4" | 27,2 | 19 | 72 | 36 | 18 | 67 | 47,63 | 50 | 22,23 | M10 | 3/8" | 4100 |
| 345 | DFS102100 | 1" | 34,1 | 25 | 76 | 36 | 18 | 72 | 52,37 | 54 | 26,19 | M10 | 3/8" | 4131 |
| 275 | DFS104114 | 1 1/4" | 42,8 | 31 | 82 | 42 | 20 | 81 | 58,72 | 70 | 30,18 | M10 | 7/16" | 4150 |
| 200 | DFS106112 | 1 1/2" | 48,6 | 38 | 88 | 50 | 22 | 95 | 69,85 | 78 | 35,71 | M12 | 1/2" | 4187 |
| 200 | DFS108200 | 2" | 61 | 50 | 90 | 50 | 24 | 104 | 77,77 | 90 | 42,88 | M12 | 1/2" | 4225 |
| 170 | DFS110212 | 2 1/2" | 76,6 | 63 | 100 | 50 | 28 | 117 | 88,90 | 102 | 50,80 | M12 | 1/2" | 4275 |
| 135 | DFS112300 | 3" | 90,5 | 73 | 100 | 54 | 28 | 136 | 106,38 | 125 | 61,93 | M16 | 5/8" | 4337 |
| 35 | DFS114312 | 3 1/2" | 103 | 89 | 100 | 54 | 28 | 154 | 120,65 | 138 | 69,85 | M16 | 5/8" | 4387 |
| 35 | DFS116400 | 4" | 115,5 | 99 | 100 | 54 | 28 | 164 | 130,18 | 148 | 77,77 | M16 | 5/8" | 4437 |
| 35 | DFS118500 | 5" | 142 | 120 | 100 | 56 | 28 | 185 | 152,40 | 181 | 92,08 | M16 | 5/8" | 4537 |

6000 psi

| PRESS. MAX bar | TIPO TYPE | S.A.E. | A | B | L | H | M | C | D | E | F | G | | O-Rings |
|----------------|-----------|--------|------|----|-----|-----|----|-----|--------|-----|-------|-------------------|-------|---------|
| | | | | | | | | | | | | Viti/Screws Metr. | UNC | |
| 420 | DFS401038 | 3/8" | 17,5 | 13 | 72 | 32 | 18 | 58 | 40,49 | 48 | 18,24 | M8 | 5/16" | 4075 |
| 420 | DFS401012 | 1/2" | 21,6 | 13 | 72 | 32 | 18 | 58 | 40,49 | 48 | 18,24 | M8 | 5/16" | 4075 |
| 420 | DFS402034 | 3/4" | 27,2 | 19 | 72 | 38 | 20 | 72 | 50,80 | 54 | 23,80 | M10 | 3/8" | 4100 |
| 420 | DFS403100 | 1" | 34,1 | 25 | 88 | 48 | 22 | 81 | 57,15 | 67 | 27,76 | M12 | 7/16" | 4131 |
| 420 | DFS404114 | 1 1/4" | 42,8 | 31 | 88 | 54 | 22 | 95 | 66,68 | 78 | 31,75 | M14 | 1/2" | 4150 |
| 420 | DFS405112 | 1 1/2" | 48,6 | 38 | 102 | 60 | 24 | 107 | 79,38 | 90 | 36,50 | M16 | 5/8" | 4187 |
| 420 | DFS406200 | 2" | 61 | 50 | 140 | 74 | 25 | 136 | 96,82 | 117 | 44,45 | M20 | 3/4" | 4225 |
| 420 | DFS408212 | 2 1/2" | 76,6 | 63 | 150 | 90 | 28 | 167 | 123,80 | 151 | 58,70 | M24 | - | 4275 |
| 420 | DFS410300 | 3" | 90,5 | 73 | 180 | 110 | 30 | 209 | 152,40 | 179 | 71,40 | M30 | - | 4337 |

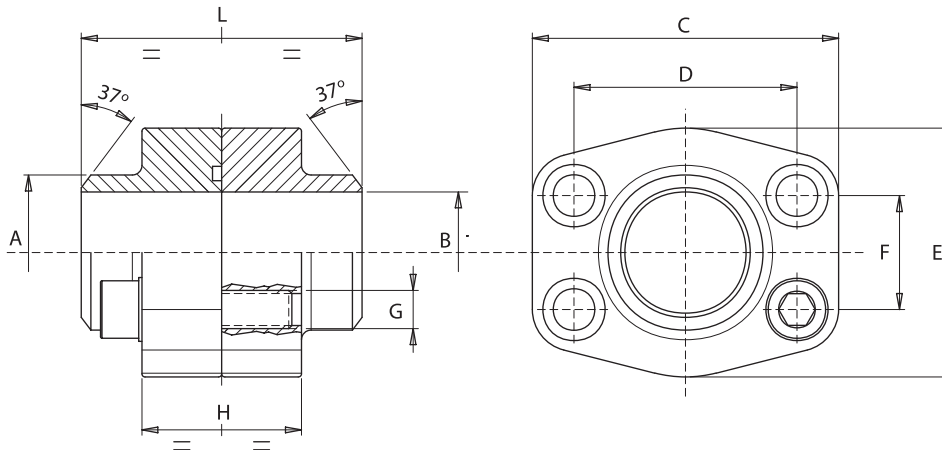
Esempio codice di ordinazione - Ordering example

DFS 104 114 -

Flangia
Flange

M Viti metriche, rondelle, O-Rings
Metrical screws, washers, O-Rings

U Viti UNC, rondelle, O-Rings
UNC screws, washers, O-Rings
(brunite - burnished)

Materiale: acciaio
Material: steel


3000 psi

| PRESS. MAX bar | TIPO TYPE | S.A.E. | A | B | L | H | C | D | E | F | G Viti / Screws | | O-Rings |
|----------------|-----------|--------|------|-----|-----|----|-----|--------|-----|-------|-----------------|-------|---------|
| | | | | | | | | | | | Metr. | UNC | |
| 345 | DFT080012 | 1/2" | 21,6 | 13 | 72 | 32 | 58 | 38,10 | 48 | 17,48 | M8 | 5/16" | 4075 |
| 345 | DFT100034 | 3/4" | 27,2 | 19 | 72 | 36 | 67 | 47,63 | 50 | 22,23 | M10 | 3/8" | 4100 |
| 345 | DFT102100 | 1" | 34,5 | 25 | 76 | 36 | 72 | 52,37 | 54 | 26,19 | M10 | 3/8" | 4131 |
| 345 | DFT104114 | 1 1/4" | 42,8 | 31 | 82 | 42 | 81 | 58,72 | 70 | 30,18 | M10 | 7/16" | 4150 |
| 275 | DFT106112 | 1 1/2" | 48,6 | 38 | 88 | 50 | 95 | 69,85 | 78 | 35,71 | M12 | 1/2" | 4187 |
| 200 | DFT108200 | 2" | 61 | 50 | 90 | 50 | 104 | 77,77 | 90 | 42,88 | M12 | 1/2" | 4225 |
| 200 | DFT110212 | 2 1/2" | 76,6 | 63 | 100 | 50 | 116 | 88,90 | 102 | 50,80 | M12 | 1/2" | 4275 |
| 170 | DFT112300 | 3" | 89 | 73 | 100 | 54 | 136 | 106,38 | 125 | 61,93 | M16 | 5/8" | 4337 |
| 135 | DFT114312 | 3 1/2" | 103 | 89 | 100 | 54 | 154 | 120,65 | 138 | 69,85 | M16 | 5/8" | 4387 |
| 35 | DFT116400 | 4" | 115 | 99 | 100 | 54 | 164 | 130,18 | 148 | 77,77 | M16 | 5/8" | 4437 |
| 35 | DFT118500 | 5" | 141 | 120 | 100 | 56 | 185 | 152,40 | 181 | 92,08 | M16 | 5/8" | 4537 |

6000 psi

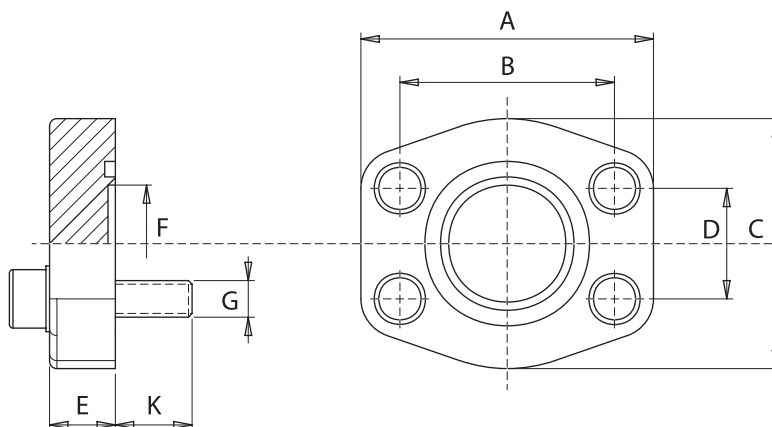
| PRESS. MAX bar | TIPO TYPE | S.A.E. | A | B | L | H | C | D | E | F | G Viti / Screws | | O-Rings |
|----------------|-----------|--------|------|----|-----|-----|-----|--------|-----|-------|-----------------|-------|---------|
| | | | | | | | | | | | Metr. | UNC | |
| 420 | DFT401038 | 3/8" | 17,5 | 10 | 72 | 34 | 58 | 40,49 | 48 | 18,24 | M8 | 5/16" | 4075 |
| 420 | DFT401012 | 1/2" | 21,6 | 13 | 72 | 34 | 58 | 40,49 | 48 | 18,24 | M8 | 5/16" | 4075 |
| 420 | DFT402034 | 3/4" | 27,2 | 18 | 72 | 37 | 72 | 50,80 | 54 | 23,80 | M10 | 3/8" | 4100 |
| 420 | DFT403100 | 1" | 34,5 | 22 | 88 | 48 | 81 | 57,15 | 68 | 27,76 | M12 | 7/16" | 4131 |
| 420 | DFT404114 | 1 1/4" | 42,8 | 28 | 88 | 52 | 95 | 66,68 | 78 | 31,75 | M14 | 1/2" | 4150 |
| 420 | DFT405112 | 1 1/2" | 48,6 | 32 | 102 | 59 | 107 | 79,38 | 90 | 36,50 | M16 | 5/8" | 4187 |
| 420 | DFT406200 | 2" | 61 | 41 | 140 | 72 | 136 | 96,82 | 117 | 44,45 | M20 | 3/4" | 4225 |
| 420 | DFT408212 | 2 1/2" | 76,6 | 50 | 150 | 90 | 167 | 123,80 | 151 | 58,70 | M24 | - | 4275 |
| 420 | DFT410300 | 3" | 90 | 58 | 180 | 110 | 209 | 152,40 | 179 | 71,40 | M30 | - | 4337 |

Esempio codice di ordinazione - Ordering example

| | | | |
|---------------|--|----------|--|
| DFT 404 114 - | | M | Viti metriche, rondelle, O-Rings Metrical screws, washers, O-Rings |
| | | U | Viti UNC, rondelle, O-Rings UNC screws, washers, O-Rings (brunite - burnished) |

Flangia
Flange

Materiale: acciaio
Material: steel



3000 psi

| PRESS. MAX bar | TIPO TYPE | S.A.E. | A | B | C | D | E | F | K | G | | O-Rings |
|----------------|-----------|--------|-----|--------|-----|-------|----|-----|----|-------------|-------|---------|
| | | | | | | | | | | Viti/Screws | | |
| | | | | | | | | | | Metr. | UNC | |
| 345 | C080012 | 1/2" | 58 | 38,10 | 48 | 17,48 | 16 | 10 | 14 | M8 | 5/16" | 4075 |
| 345 | C100034 | 3/4" | 67 | 47,63 | 50 | 22,23 | 18 | 15 | 16 | M10 | 3/8" | 4100 |
| 345 | C102100 | 1" | 72 | 52,37 | 54 | 26,19 | 19 | 18 | 16 | M10 | 3/8" | 4131 |
| 275 | C104114 | 1 1/4" | 80 | 58,72 | 70 | 30,18 | 21 | 23 | 18 | M10 | 7/16" | 4150 |
| 200 | C106112 | 1 1/2" | 96 | 69,85 | 78 | 35,71 | 24 | 28 | 19 | M12 | 1/2" | 4187 |
| 200 | C108200 | 2" | 104 | 77,77 | 90 | 42,88 | 24 | 45 | 19 | M12 | 1/2" | 4225 |
| 175 | C110212 | 2 1/2" | 117 | 88,90 | 102 | 50,80 | 25 | 58 | 19 | M12 | 1/2" | 4275 |
| 135 | C112300 | 3" | 137 | 106,38 | 125 | 61,93 | 25 | 70 | 27 | M16 | 5/8" | 4337 |
| 35 | C114312 | 3 1/2" | 153 | 120,65 | 137 | 69,85 | 25 | 85 | 27 | M16 | 5/8" | 4387 |
| 35 | C116400 | 4" | 163 | 130,18 | 147 | 77,77 | 25 | 95 | 27 | M16 | 5/8" | 4437 |
| 35 | C118500 | 5" | 185 | 152,40 | 181 | 92,08 | 25 | 110 | 27 | M16 | 5/8" | 4537 |

6000 psi

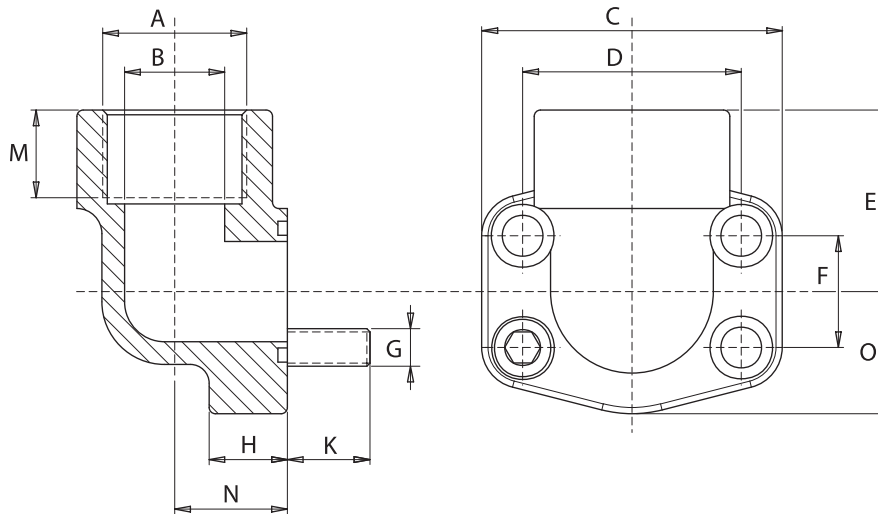
| PRESS. MAX bar | TIPO TYPE | S.A.E. | A | B | C | D | E | F | K | G | | O-Rings |
|----------------|-----------|--------|-----|--------|-----|-------|----|----|----|-------------|-------|---------|
| | | | | | | | | | | Viti/Screws | | |
| | | | | | | | | | | Metr. | UNC | |
| 420 | C401012 | 3/8" | 58 | 40,49 | 48 | 18,24 | 16 | 10 | 14 | M8 | 5/16" | 4075 |
| 420 | C402034 | 3/4" | 72 | 50,80 | 54 | 23,80 | 19 | 15 | 16 | M10 | 3/8" | 4100 |
| 420 | C403100 | 1" | 80 | 57,15 | 67 | 27,76 | 24 | 22 | 18 | M12 | 7/16" | 4131 |
| 420 | C404114 | 1 1/4" | 95 | 66,68 | 78 | 31,75 | 27 | 30 | 24 | M14 | 1/2" | 4150 |
| 420 | C405112 | 1 1/2" | 104 | 79,38 | 90 | 36,50 | 30 | 35 | 24 | M16 | 5/8" | 4187 |
| 420 | C406200 | 2" | 136 | 96,82 | 124 | 44,45 | 35 | 48 | 31 | M20 | 3/4" | 4225 |
| 420 | C408212 | 2 1/2" | 167 | 123,80 | 150 | 58,70 | 45 | 55 | 40 | M24 | - | 4275 |
| 420 | C410300 | 3" | 209 | 152,4 | 179 | 71,40 | 55 | 65 | 45 | M30 | - | 4337 |

Esempio codice di ordinazione - Ordering example

C 112 300 - M U

Flangia
Flange

Su richiesta: - On request:
 M Viti metriche, rondelle, O-Rings
 Metrical screws, washers, O-Rings
 U Viti UNC, rondelle, O-Rings
 UNC screws, washers, O-Rings
 (brunite - burnished)

Materiale: acciaio
Material: steel


3000 psi

| PRESS. MAX bar | TIPO TYPE | A SAE | B | M | C | D | E | O | F | H | N | K | G | | O-Rings |
|----------------------|--------------|----------|----|----|-----|-------|----|----|-------|----|----|----|----------------------|-------|---------|
| | | | | | | | | | | | | | Viti/Screws Metr. | UNC | |
| 345 | F90280G012 | 1/2" | 13 | 20 | 58 | 38,10 | 37 | 23 | 17,48 | 17 | 18 | 13 | M8 | 5/16" | 4075 |
| 345 | F90300G034 | 3/4" | 19 | 20 | 69 | 47,63 | 39 | 25 | 22,23 | 18 | 22 | 15 | M10 | 3/8" | 4100 |
| 345 | F90302G100 | 1" | 25 | 20 | 75 | 52,37 | 42 | 27 | 26,19 | 19 | 28 | 15 | M10 | 3/8" | 4131 |
| 275 | F90304G114 | 1 1/4" | 31 | 23 | 82 | 58,72 | 50 | 34 | 30,18 | 22 | 30 | 17 | M10 | 7/16" | 4150 |
| 200 | F90306G112 | 1 1/2" | 38 | 25 | 96 | 69,85 | 59 | 39 | 35,71 | 25 | 36 | 18 | M12 | 1/2" | 4187 |
| 200 | F90308G200 | 2" | 50 | 27 | 106 | 77,77 | 66 | 44 | 42,88 | 25 | 41 | 18 | M12 | 1/2" | 4225 |
| 170 | F90310G212 | 2 1/2" | 60 | 31 | 116 | 88,90 | 78 | 50 | 50,80 | 25 | 50 | 18 | M12 | 1/2" | 4275 |

6000 psi

| PRESS. MAX bar | TIPO TYPE | A SAE | B | M | C | D | E | O | F | H | N | K | G | | O-Rings |
|----------------------|--------------|----------|----|----|-----|-------|----|----|-------|----|----|----|----------------------|-------|---------|
| | | | | | | | | | | | | | Viti/Screws Metr. | UNC | |
| 420 | F90580G012 | 1/2" | 13 | 20 | 58 | 40,49 | 37 | 23 | 18,24 | 17 | 18 | 13 | M8 | 5/16" | 4075 |
| 420 | F90600G034 | 3/4" | 19 | 23 | 73 | 50,80 | 42 | 28 | 23,80 | 20 | 28 | 15 | M10 | 3/8" | 4100 |
| 420 | F90602G100 | 1" | 25 | 25 | 83 | 57,15 | 50 | 34 | 27,76 | 24 | 30 | 19 | M12 | 7/16" | 4131 |
| 420 | F90604G114 | 1 1/4" | 31 | 27 | 96 | 66,68 | 59 | 40 | 31,75 | 25 | 36 | 21 | M14 | 1/2" | 4150 |
| 420 | F90606G112 | 1 1/2" | 38 | 29 | 110 | 79,38 | 66 | 45 | 36,50 | 26 | 41 | 25 | M16 | 5/8" | 4187 |
| 420 | F90608G200 | 2" | 50 | 35 | 135 | 96,82 | 76 | 59 | 44,45 | 35 | 45 | 32 | M20 | 3/4" | 4225 |

Esempio codice di ordinazione - Ordering example

 Flangia
 Flange

F90 308 G200 -

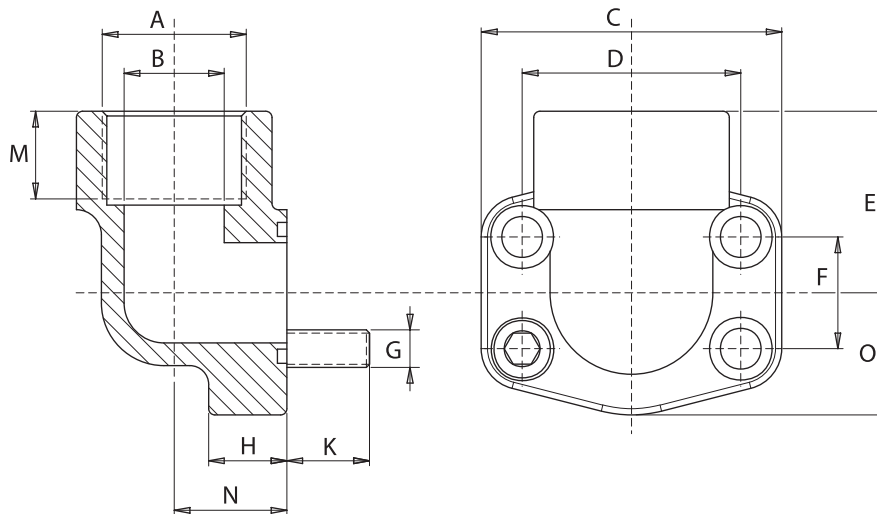
M Viti metriche, rondelle, O-Rings
 Metrical screws, washers, O-Rings

U Viti UNC, rondelle, O-Rings
 UNC screws, washers, O-Rings

Su richiesta: - On request:

(brunite - burnished)

Materiale: acciaio
Material: steel



3000 psi

| PRESS. MAX bar | TIPO TYPE | A SAE | B | M | C | D | E | O | F | H | N | K | G | | O-Rings |
|----------------------|--------------|----------|----|----|-----|-------|----|----|-------|----|----|----|----------------------|-------|---------|
| | | | | | | | | | | | | | Viti/Screws Metr. | UNC | |
| 345 | F90280N012 | 1/2" | 13 | 20 | 58 | 38,10 | 37 | 23 | 17,48 | 17 | 18 | 13 | M8 | 5/16" | 4075 |
| 345 | F90300N034 | 3/4" | 19 | 20 | 69 | 47,63 | 39 | 25 | 22,23 | 18 | 22 | 15 | M10 | 3/8" | 4100 |
| 345 | F90302N100 | 1" | 25 | 20 | 75 | 52,37 | 42 | 27 | 26,19 | 19 | 28 | 15 | M10 | 3/8" | 4131 |
| 275 | F90304N114 | 1 1/4" | 31 | 23 | 82 | 58,72 | 50 | 34 | 30,18 | 22 | 30 | 17 | M10 | 7/16" | 4150 |
| 200 | F90306N112 | 1 1/2" | 38 | 25 | 96 | 69,85 | 59 | 39 | 35,71 | 25 | 36 | 18 | M12 | 1/2" | 4187 |
| 200 | F90308N200 | 2" | 50 | 27 | 106 | 77,77 | 66 | 44 | 42,88 | 25 | 41 | 18 | M12 | 1/2" | 4225 |
| 170 | F90310N212 | 2 1/2" | 60 | 31 | 116 | 88,90 | 78 | 50 | 50,80 | 25 | 50 | 18 | M12 | 1/2" | 4275 |

6000 psi

| PRESS. MAX bar | TIPO TYPE | A SAE | B | M | C | D | E | O | F | H | N | K | G | | O-Rings |
|----------------------|--------------|----------|----|----|-----|-------|----|----|-------|----|----|----|----------------------|-------|---------|
| | | | | | | | | | | | | | Viti/Screws Metr. | UNC | |
| 420 | F90580N012 | 1/2" | 13 | 20 | 58 | 40,49 | 37 | 23 | 18,24 | 17 | 18 | 13 | M8 | 5/16" | 4075 |
| 420 | F90300N034 | 3/4" | 19 | 23 | 73 | 50,80 | 42 | 28 | 23,80 | 20 | 28 | 15 | M10 | 3/8" | 4100 |
| 420 | F90602N100 | 1" | 25 | 25 | 83 | 57,15 | 50 | 34 | 27,76 | 24 | 30 | 19 | M12 | 7/16" | 4131 |
| 420 | F90604N114 | 1 1/4" | 31 | 27 | 96 | 66,68 | 59 | 40 | 31,75 | 25 | 36 | 21 | M14 | 1/2" | 4150 |
| 420 | F90606N112 | 1 1/2" | 38 | 29 | 110 | 79,38 | 66 | 45 | 36,50 | 26 | 41 | 25 | M16 | 5/8" | 4187 |
| 420 | F90608N200 | 2" | 50 | 35 | 135 | 96,82 | 76 | 59 | 44,45 | 35 | 45 | 32 | M20 | 3/4" | 4225 |

Esempio codice di ordinazione - Ordering example

F90 308 N200 -

Flangia
Flange

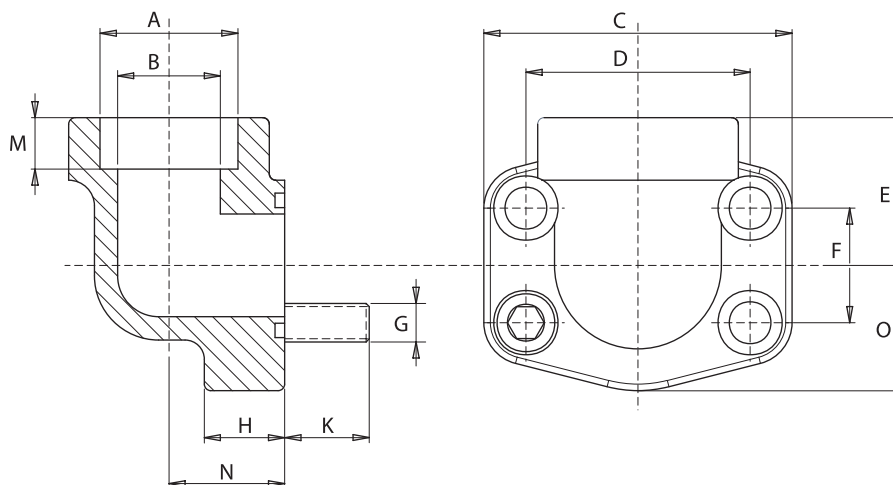
M Viti metriche, rondelle, O-Rings
Metrical screws, washers, O-Rings

U Viti UNC, rondelle, O-Rings
UNC screws, washers, O-Rings

(brunite - burnished)

Su richiesta - On request:

Materiale: acciaio
 Material: steel



3000 psi

| PRESS. MAX bar | TIPO TYPE | S.A.E. | A | B | M | C | D | E | O | F | H | N | K | G | | O-Rings |
|----------------------|--------------|--------|------|----|----|-----|-------|----|----|-------|----|----|----|----------------------|-------|---------|
| | | | | | | | | | | | | | | Viti/Screws Metr. | UNC | |
| 345 | FS90280012 | 1/2" | 21,6 | 13 | 5 | 58 | 38,10 | 29 | 24 | 17,48 | 17 | 18 | 13 | M8 | 5/16" | 4075 |
| 345 | FS90300034 | 3/4" | 27,2 | 19 | 5 | 69 | 47,63 | 26 | 26 | 22,23 | 18 | 22 | 15 | M10 | 3/8" | 4100 |
| 345 | FS90302100 | 1" | 34,1 | 25 | 6 | 73 | 52,37 | 29 | 28 | 26,19 | 19 | 28 | 15 | M10 | 3/8" | 4131 |
| 275 | FS90304114 | 1 1/4" | 42,8 | 31 | 7 | 83 | 58,72 | 35 | 35 | 30,18 | 22 | 30 | 17 | M10 | 7/16" | 4150 |
| 200 | FS90306112 | 1 1/2" | 48,6 | 38 | 8 | 96 | 69,85 | 44 | 40 | 35,71 | 25 | 36 | 18 | M12 | 1/2" | 4187 |
| 200 | FS90308200 | 2" | 61 | 50 | 10 | 106 | 77,77 | 51 | 45 | 42,88 | 25 | 41 | 18 | M12 | 1/2" | 4225 |
| 170 | FS90310212 | 2 1/2" | 76,6 | 60 | 28 | 116 | 88,90 | 78 | 50 | 50,80 | 25 | 50 | 18 | M12 | 1/2" | 4275 |

6000 psi

| PRESS. MAX bar | TIPO TYPE | S.A.E. | A | B | M | C | D | E | O | F | H | N | K | G | | O-Rings |
|----------------------|--------------|--------|------|----|----|-----|-------|----|----|-------|----|----|----|----------------------|-------|---------|
| | | | | | | | | | | | | | | Viti/Screws Metr. | UNC | |
| 420 | FS90580012 | 1/2" | 21,6 | 13 | 5 | 58 | 40,49 | 29 | 24 | 18,24 | 17 | 18 | 13 | M8 | 5/16" | 4075 |
| 420 | FS90600034 | 3/4" | 27,2 | 19 | 6 | 73 | 50,80 | 29 | 28 | 23,80 | 19 | 28 | 15 | M10 | 3/8" | 4100 |
| 420 | FS90602100 | 1" | 24,1 | 25 | 7 | 83 | 57,15 | 35 | 35 | 27,76 | 24 | 30 | 19 | M12 | 7/16" | 4131 |
| 420 | FS90604114 | 1 1/4" | 42,8 | 31 | 8 | 96 | 66,68 | 44 | 40 | 31,75 | 25 | 36 | 21 | M14 | 1/2" | 4150 |
| 420 | FS90606112 | 1 1/2" | 48,6 | 38 | 10 | 110 | 79,38 | 50 | 45 | 36,50 | 26 | 41 | 25 | M16 | 5/8" | 4187 |
| 420 | FS90608200 | 2" | 61 | 50 | 12 | 135 | 96,82 | 66 | 59 | 44,45 | 35 | 45 | 32 | M20 | 3/4" | 4225 |

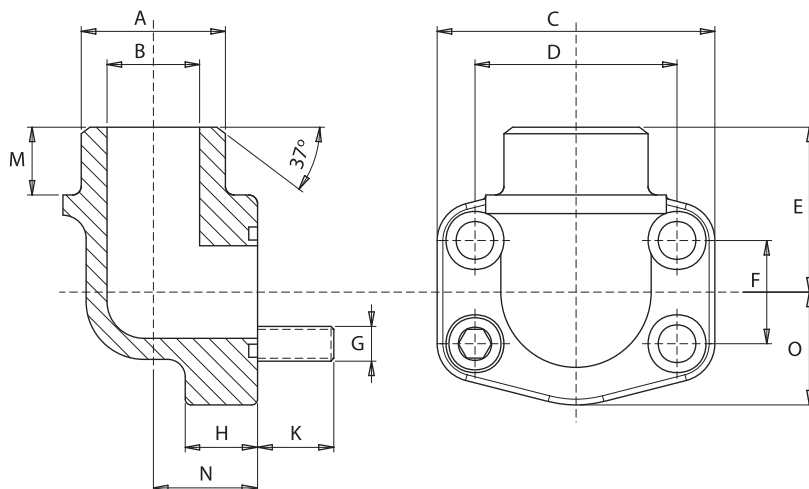
Esempio codice di ordinazione - Ordering example

Flangia
 Flange

FS90 304 114 -

Su richiesta - On request:
M Viti metriche, rondelle, O-Rings
 Metrical screws, washers, O-Rings
U Viti UNC, rondelle, O-Rings
 UNC screws, washers, O-Rings
 (brunite - burnished)

Materiale: acciaio
Material: steel



3000 psi

| PRESS. MAX bar | TIPO TYPE | S.A.E. | A | B | M | C | D | E | O | F | H | N | K | G | | O-Rings |
|----------------|------------|--------|------|----|----|-----|-------|----|----|-------|----|----|----|-------------------|-------|---------|
| | | | | | | | | | | | | | | Viti/Screws Metr. | UNC | |
| 345 | FT90280012 | 1/2" | 21,6 | 13 | 12 | 58 | 38,10 | 40 | 24 | 17,48 | 17 | 18 | 13 | M8 | 5/16" | 4075 |
| 345 | FT90300034 | 3/4" | 27,2 | 19 | 12 | 69 | 47,63 | 42 | 26 | 22,23 | 18 | 22 | 15 | M10 | 3/8" | 4100 |
| 345 | FT90302100 | 1" | 34,5 | 25 | 13 | 73 | 52,37 | 50 | 28 | 26,19 | 19 | 28 | 15 | M10 | 3/8" | 4131 |
| 275 | FT90304114 | 1 1/4" | 42,8 | 31 | 13 | 83 | 58,72 | 58 | 35 | 30,18 | 22 | 30 | 17 | M10 | 7/16" | 4150 |
| 200 | FT90306112 | 1 1/2" | 48,6 | 38 | 14 | 96 | 69,85 | 67 | 40 | 35,71 | 25 | 36 | 18 | M12 | 1/2" | 4187 |
| 200 | FT90308200 | 2" | 61 | 50 | 15 | 106 | 77,77 | 67 | 45 | 42,88 | 25 | 41 | 18 | M12 | 1/2" | 4225 |
| 170 | FT90310212 | 2 1/2" | 76,6 | 60 | 25 | 116 | 88,90 | 78 | 51 | 50,80 | 25 | 50 | 18 | M12 | 1/2" | 4275 |

6000 psi

| PRESS. MAX bar | TIPO TYPE | S.A.E. | A | B | M | C | D | E | O | F | H | N | K | G | | O-Rings |
|----------------|------------|--------|------|----|----|-----|-------|----|----|-------|----|----|----|-------------------|-------|---------|
| | | | | | | | | | | | | | | Viti/Screws Metr. | UNC | |
| 420 | FT90580012 | 1/2" | 21,6 | 13 | 12 | 58 | 40,49 | 40 | 24 | 18,24 | 17 | 18 | 13 | M8 | 5/16" | 4075 |
| 420 | FT90600034 | 3/4" | 27,2 | 18 | 12 | 73 | 50,80 | 50 | 28 | 23,80 | 20 | 28 | 15 | M10 | 3/8" | 4100 |
| 420 | FT90602100 | 1" | 34,5 | 22 | 13 | 83 | 57,15 | 58 | 35 | 27,76 | 24 | 30 | 19 | M12 | 7/16" | 4131 |
| 420 | FT90604114 | 1 1/4" | 42,8 | 28 | 13 | 96 | 66,68 | 67 | 40 | 31,75 | 25 | 36 | 21 | M14 | 1/2" | 4150 |
| 420 | FT90606112 | 1 1/2" | 48,6 | 32 | 15 | 110 | 79,38 | 66 | 45 | 36,50 | 26 | 41 | 25 | M16 | 5/8" | 4187 |
| 420 | FT90608200 | 2" | 61 | 41 | 15 | 135 | 96,82 | 76 | 59 | 44,45 | 35 | 45 | 32 | M20 | 3/4" | 4225 |

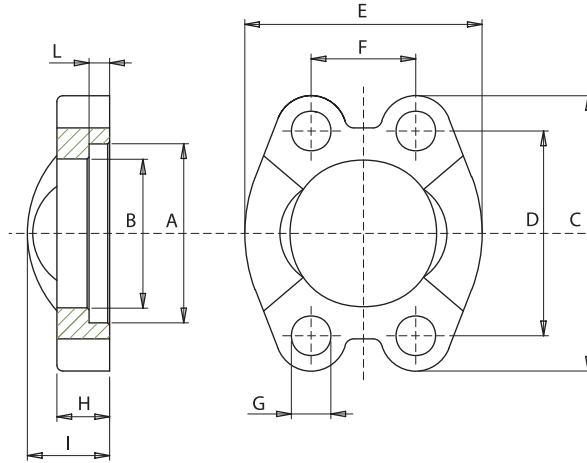
Esempio codice di ordinazione - Ordering example

Flangia
Flange

FT90 602 100 -

Su richiesta: - On request:
M Viti metriche, rondelle, O-Rings
 Metrical screws, washers, O-Rings
U Viti UNC, rondelle, O-Rings
 UNC screws, washers, O-Rings
 (brunite - burnished)

Materiale: acciaio
 Material: steel



3000 psi

| PRESS. MAX bar | TIPO TYPE | S.A.E. | A | B | C | D | E | F | G | H | I | L |
|----------------|-------------|--------|-------|--------|-----|--------|-----|-------|------|----|----|------|
| 210 | SFI3001012 | 1/2" | 31 | 24,3 | 55 | 38,10 | 46 | 17,48 | 8,75 | 13 | 20 | 6,2 |
| 210 | SFI3002034 | 3/4" | 38,9 | 32,1 | 66 | 47,63 | 52 | 22,23 | 10,5 | 14 | 22 | 6,2 |
| 210 | SFI3003100 | 1" | 45,2 | 38,5 | 69 | 52,37 | 59 | 26,19 | 10,5 | 16 | 24 | 7,5 |
| 210 | SFI3004114A | 1 1/4" | 51,6 | 43,7 | 79 | 58,72 | 73 | 30,18 | 10,5 | 14 | 22 | 7,5 |
| 210 | SFI3004114 | 1 1/4" | 51,6 | 43,7 | 79 | 58,72 | 73 | 30,18 | 12 | 14 | 22 | 7,5 |
| 210 | SFI3004114B | 1 1/4" | 51,6 | 43,7 | 79 | 58,72 | 73 | 30,18 | 12,5 | 14 | 22 | 7,5 |
| 210 | SFI3005112 | 1 1/2" | 61,1 | 50,8 | 95 | 69,85 | 83 | 35,71 | 13,5 | 16 | 25 | 7,5 |
| 210 | SFI3005112B | 1 1/2" | 61,1 | 50,8 | 95 | 69,85 | 83 | 35,71 | 14,5 | 16 | 25 | 7,5 |
| 210 | SFI3006200 | 2" | 72,2 | 62,7 | 103 | 77,77 | 97 | 42,88 | 13,5 | 16 | 26 | 9 |
| 210 | SFI3006200B | 2" | 72,2 | 62,7 | 103 | 77,77 | 97 | 42,88 | 14,5 | 16 | 26 | 9 |
| 175 | SFI3007212 | 2 1/2" | 84,9 | 74,9 | 114 | 88,90 | 109 | 50,80 | 13,5 | 19 | 38 | 9 |
| 175 | SFI3007212B | 2 1/2" | 84,9 | 74,9 | 114 | 88,90 | 109 | 50,80 | 14,5 | 19 | 38 | 9 |
| 135 | SFI3008300 | 3" | 102,4 | 90,9 | 136 | 106,38 | 131 | 61,93 | 17 | 22 | 41 | 9 |
| 35 | SFI3009312 | 3 1/2" | 115 | 102,36 | 151 | 120,65 | 140 | 69,85 | 17 | 23 | 45 | 10,7 |
| 35 | SFI3010400 | 4" | 127,8 | 115,1 | 161 | 130,18 | 150 | 77,77 | 17 | 25 | 48 | 10,7 |
| 35 | SFI3011500 | 5" | 153,2 | 140,5 | 182 | 152,40 | 180 | 92,08 | 17 | 28 | 50 | 10,7 |

6000 psi

| PRESS. MAX bar | TIPO TYPE | S.A.E. | A | B | C | D | E | F | G | H | I | L |
|----------------|------------|--------|-------|-------|-----|--------|-----|-------|------|----|----|------|
| 420 | SFI6001012 | 1/2" | 32,5 | 24,6 | 58 | 40,49 | 48 | 18,24 | 8,75 | 16 | 22 | 7,2 |
| 420 | SFI6002034 | 3/4" | 42 | 32,5 | 71 | 50,80 | 60 | 23,80 | 10,5 | 19 | 28 | 8,3 |
| 420 | SFI6003100 | 1" | 48,4 | 38,9 | 80 | 57,15 | 70 | 27,76 | 13 | 24 | 32 | 9 |
| 420 | SFI6004114 | 1 1/4" | 54,8 | 44,5 | 97 | 66,68 | 78 | 31,75 | 15 | 27 | 38 | 9,8 |
| 420 | SFI6005112 | 1 1/2" | 64,3 | 51,6 | 112 | 79,38 | 96 | 36,50 | 17 | 30 | 42 | 12,1 |
| 420 | SFI6006200 | 2" | 80,2 | 67,6 | 135 | 96,82 | 114 | 44,45 | 21 | 37 | 52 | 12,1 |
| 420 | SFI6008212 | 2 1/2" | 108,5 | 89,5 | 174 | 123,80 | 150 | 58,70 | 25 | 48 | 48 | 20 |
| 420 | SFI6010300 | 3" | 132,5 | 114,5 | 209 | 152,40 | 178 | 71,40 | 32 | 58 | 58 | 25 |

Esempio codice di ordinazione - Ordering example

SFI 3004 114B

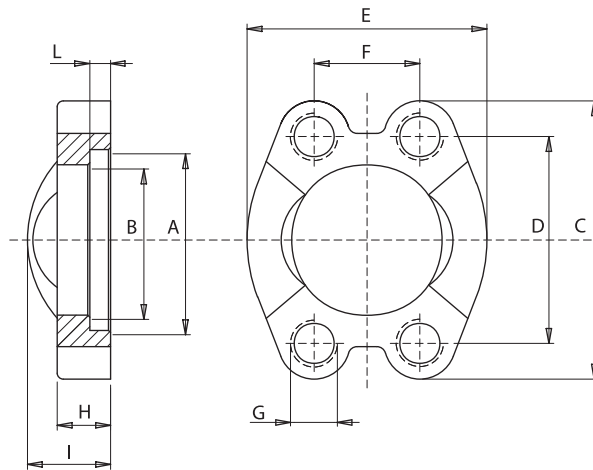
M Viti metriche, rondelle, O-Rings
 Metrical screws, washers, O-Rings

Su richiesta: - On request:

Semiflangia
 Splitflange

Particolare zincato bianco - White zinc plated

Materiale: acciaio
 Material: steel



3000 psi

| PRESS. MAX bar | TIPO TYPE | S.A.E. | A | B | C | D | E | F | G | H | I | L |
|----------------|--------------|--------|-------|--------|-----|--------|-----|-------|-----|----|----|------|
| 210 | SFIM3001012 | 1/2" | 31 | 24,3 | 55 | 38,10 | 46 | 17,48 | M8 | 13 | 20 | 6,2 |
| 210 | SFIM3002034 | 3/4" | 38,9 | 32,1 | 66 | 47,63 | 52 | 22,23 | M10 | 14 | 22 | 6,2 |
| 210 | SFIM3003100 | 1" | 45,2 | 38,5 | 69 | 52,37 | 59 | 26,19 | M10 | 16 | 24 | 7,5 |
| 210 | SFIM3004114 | 1 1/4" | 51,6 | 43,7 | 79 | 58,72 | 73 | 30,18 | M10 | 14 | 22 | 7,5 |
| 210 | SFIM3004114B | 1 1/4" | 51,6 | 43,7 | 79 | 58,72 | 73 | 30,18 | M12 | 14 | 22 | 7,5 |
| 210 | SFIM3005112 | 1 1/2" | 61,1 | 50,8 | 95 | 69,85 | 83 | 35,71 | M12 | 16 | 25 | 7,5 |
| 210 | SFIM3005112B | 1 1/2" | 61,1 | 50,8 | 95 | 69,85 | 83 | 35,71 | M14 | 16 | 25 | 7,5 |
| 210 | SFIM3006200 | 2" | 72,2 | 62,7 | 103 | 77,77 | 97 | 42,88 | M12 | 16 | 26 | 9 |
| 210 | SFIM3006200B | 2" | 72,2 | 62,7 | 103 | 77,77 | 97 | 42,88 | M14 | 16 | 26 | 9 |
| 175 | SFIM3007212 | 2 1/2" | 84,9 | 74,9 | 114 | 88,90 | 109 | 50,80 | M12 | 19 | 38 | 9 |
| 175 | SFIM3007212B | 2 1/2" | 84,9 | 74,9 | 114 | 88,90 | 109 | 50,80 | M14 | 19 | 38 | 9 |
| 135 | SFIM3008300 | 3" | 102,4 | 90,9 | 136 | 106,38 | 131 | 61,93 | M16 | 22 | 41 | 9 |
| 35 | SFIM3009312 | 3 1/2" | 115 | 102,36 | 151 | 120,65 | 140 | 69,85 | M16 | 23 | 45 | 10,7 |
| 35 | SFIM3010400 | 4" | 127,8 | 115,1 | 161 | 130,18 | 150 | 77,77 | M16 | 25 | 48 | 10,7 |
| 35 | SFIM3011500 | 5" | 153,2 | 140,5 | 182 | 152,40 | 180 | 92,08 | M16 | 28 | 50 | 10,7 |

6000 psi

| PRESS. MAX bar | TIPO TYPE | S.A.E. | A | B | C | D | E | F | G | H | I | L |
|----------------|-------------|--------|-------|-------|-----|--------|-----|-------|-----|----|----|------|
| 420 | SFIM6001012 | 1/2" | 32,5 | 24,6 | 58 | 40,49 | 48 | 18,24 | M8 | 16 | 22 | 7,2 |
| 420 | SFIM6002034 | 3/4" | 42 | 32,5 | 71 | 50,80 | 60 | 23,80 | M10 | 19 | 28 | 8,3 |
| 420 | SFIM6003100 | 1" | 48,4 | 38,9 | 80 | 57,15 | 70 | 27,76 | M12 | 24 | 32 | 9 |
| 420 | SFIM6004114 | 1 1/4" | 54,8 | 44,5 | 97 | 66,68 | 78 | 31,75 | M14 | 27 | 38 | 9,8 |
| 420 | SFIM6005112 | 1 1/2" | 64,3 | 51,6 | 112 | 79,38 | 96 | 36,50 | M16 | 30 | 42 | 12,1 |
| 420 | SFIM6006200 | 2" | 80,2 | 67,6 | 135 | 96,82 | 114 | 44,45 | M20 | 37 | 52 | 12,1 |
| 420 | SFIM6008212 | 2 1/2" | 108,5 | 89,5 | 174 | 123,80 | 150 | 58,70 | M24 | 48 | 48 | 20 |
| 420 | SFIM6010300 | 3" | 132,5 | 114,5 | 209 | 152,40 | 178 | 71,40 | M30 | 58 | 58 | 25 |

Esempio codice di ordinazione - *Ordering example*

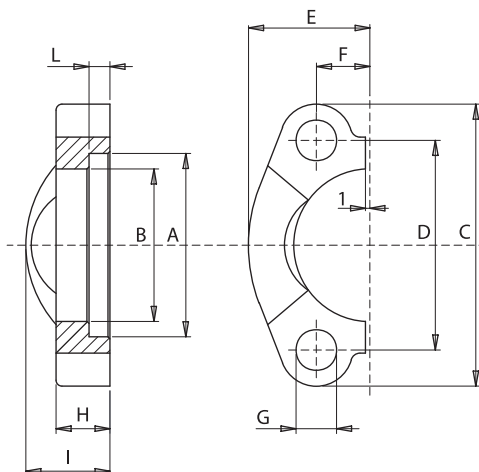
SFIM 3004 114B

Semiflangia
 Splitflange

Particolare zincato bianco - White zinc plated

Materiale: acciaio

Material: steel



3000 psi

| PRESS. MAX bar | TIPO TYPE | S.A.E. | A | B | C | D | E | F | G | H | I | L |
|----------------|-------------|--------|-------|--------|-----|--------|------|-------|------|----|----|------|
| 210 | SFT3001012 | 1/2" | 31 | 24,3 | 55 | 38,10 | 23 | 8,74 | 8,75 | 13 | 20 | 6,2 |
| 210 | SFT3002034 | 3/4" | 38,9 | 32,1 | 66 | 47,63 | 26 | 11,13 | 10,5 | 14 | 22 | 6,2 |
| 210 | SFT3003100 | 1" | 45,2 | 38,5 | 69 | 52,37 | 29,2 | 13,08 | 10,5 | 16 | 24 | 7,5 |
| 210 | SFT3004114A | 1 1/4" | 51,6 | 43,7 | 79 | 58,72 | 36,3 | 15,09 | 10,5 | 14 | 22 | 7,5 |
| 210 | SFT3004114 | 1 1/4" | 51,6 | 43,7 | 79 | 58,72 | 36,3 | 15,09 | 12 | 14 | 22 | 7,5 |
| 210 | SFT3004114B | 1 1/4" | 51,6 | 43,7 | 79 | 58,72 | 36,3 | 15,09 | 12,5 | 14 | 22 | 7,5 |
| 210 | SFT3005112 | 1 1/2" | 61,1 | 50,8 | 95 | 69,85 | 41,1 | 17,86 | 13,5 | 16 | 25 | 7,5 |
| 210 | SFT3005112B | 1 1/2" | 61,1 | 50,8 | 95 | 69,85 | 41,1 | 17,86 | 14,5 | 16 | 25 | 7,5 |
| 210 | SFT3006200 | 2" | 72,2 | 62,7 | 103 | 77,77 | 48,2 | 21,44 | 13,5 | 16 | 26 | 9 |
| 210 | SFT3006200B | 2" | 72,2 | 62,7 | 103 | 77,77 | 48,2 | 21,44 | 14,5 | 16 | 26 | 9 |
| 175 | SFT3007212 | 2 1/2" | 84,9 | 74,9 | 114 | 88,90 | 54 | 25,40 | 13,5 | 19 | 38 | 9 |
| 175 | SFT3007212B | 2 1/2" | 84,9 | 74,9 | 114 | 88,90 | 54 | 25,40 | 14,5 | 19 | 38 | 9 |
| 135 | SFT3008300 | 3" | 102,4 | 90,9 | 136 | 106,38 | 65,3 | 30,96 | 17 | 22 | 41 | 9 |
| 35 | SFT3009312 | 3 1/2" | 115 | 102,36 | 151 | 120,65 | 70 | 34,92 | 17 | 23 | 45 | 10,7 |
| 35 | SFT3010400 | 4" | 127,8 | 115,1 | 161 | 130,18 | 75 | 38,88 | 17 | 25 | 48 | 10,7 |
| 35 | SFT3011500 | 5" | 153,2 | 140,5 | 182 | 152,40 | 82 | 46,04 | 17 | 28 | 50 | 10,7 |

6000 psi

| PRESS. MAX bar | TIPO TYPE | S.A.E. | A | B | C | D | E | F | G | H | I | L |
|----------------|------------|--------|-------|-------|-----|--------|----|-------|------|----|----|------|
| 420 | SFT6001012 | 1/2" | 32,5 | 24,6 | 58 | 40,49 | 24 | 9,12 | 8,75 | 16 | 22 | 7,2 |
| 420 | SFT6002034 | 3/4" | 42 | 32,5 | 71 | 50,80 | 30 | 11,91 | 10,5 | 19 | 28 | 8,3 |
| 420 | SFT6003100 | 1" | 48,4 | 38,9 | 80 | 57,15 | 35 | 13,89 | 13 | 24 | 32 | 9 |
| 420 | SFT6004114 | 1 1/4" | 54,8 | 44,5 | 97 | 66,68 | 39 | 15,88 | 15 | 27 | 38 | 9,8 |
| 420 | SFT6005112 | 1 1/2" | 64,3 | 51,6 | 112 | 79,38 | 48 | 18,26 | 17 | 30 | 42 | 12,1 |
| 420 | SFT6006200 | 2" | 80,2 | 67,6 | 135 | 96,82 | 57 | 22,23 | 21 | 37 | 52 | 12,1 |
| 420 | SFT6008212 | 2 1/2" | 108,5 | 89,5 | 174 | 123,80 | 75 | 29,35 | 25 | 48 | 48 | 20 |
| 420 | SFT6010300 | 3" | 132,5 | 114,5 | 209 | 152,40 | 89 | 35,7 | 32 | 58 | 58 | 25 |

Esempio codice di ordinazione - Ordering example

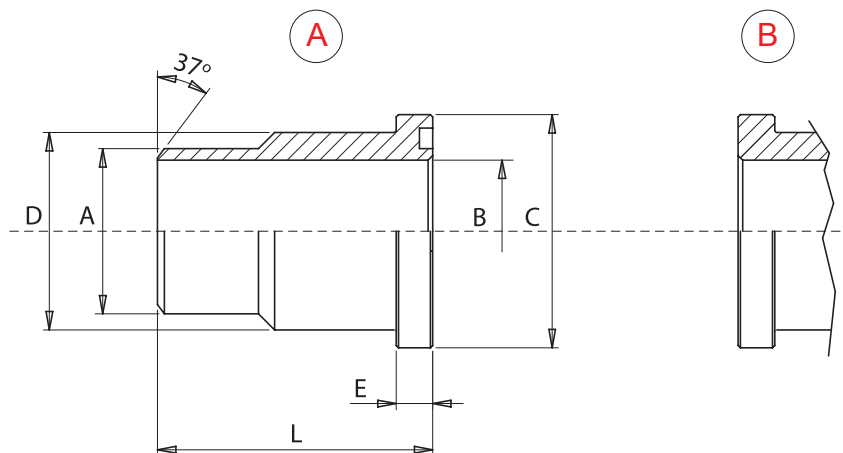
SFT 3004 114B

Semiflangia
SplitflangeM Viti metriche, rondelle, O-Rings
Metrical screws, washers, O-RingsIl codice si riferisce alla coppia di semiflange
The code refers to the spit flanges pair

Particolare zincato bianco - White zinc plated

Su richiesta: - On request:

Materiale: acciaio
Material: steel



3000 psi

| PRESS. MAX bar | TIPO TYPE | TAGLIA SIZE | A | B | C | D | E | L | O-Rings |
|----------------|------------|-------------|-----|-----|-------|------|------|-----|---------|
| 275 | CST3021012 | 1/2" | 22 | 13 | 30,2 | 24 | 6,7 | 45 | 4075 |
| 275 | CST3027034 | 3/4" | 28 | 19 | 38,1 | 31,5 | 6,7 | 50 | 4100 |
| 275 | CST3033100 | 1" | 35 | 25 | 44,4 | 38 | 8 | 55 | 4131 |
| 275 | CST3042114 | 1 1/4" | 43 | 31 | 50,8 | 43 | 8 | 60 | 4150 |
| 275 | CST3049112 | 1 1/2" | 50 | 38 | 60,3 | 50 | 8 | 65 | 4187 |
| 275 | CST3060200 | 2" | 62 | 47 | 71,4 | 62 | 9,5 | 70 | 4225 |
| 175 | CST3075212 | 2 1/2" | 74 | 63 | 84,1 | 74 | 9,5 | 75 | 4275 |
| 135 | CST3090300 | 3" | 90 | 70 | 101,6 | 90 | 9,5 | 85 | 4337 |
| 35 | CST3103312 | 3 1/2" | 102 | 88 | 114,3 | 102 | 11,2 | 90 | 4387 |
| 35 | CST3115400 | 4" | 115 | 98 | 127 | 114 | 11,2 | 100 | 4437 |
| 35 | CST3140500 | 5" | 140 | 120 | 152,4 | 140 | 11,2 | 100 | 4537 |

6000 psi

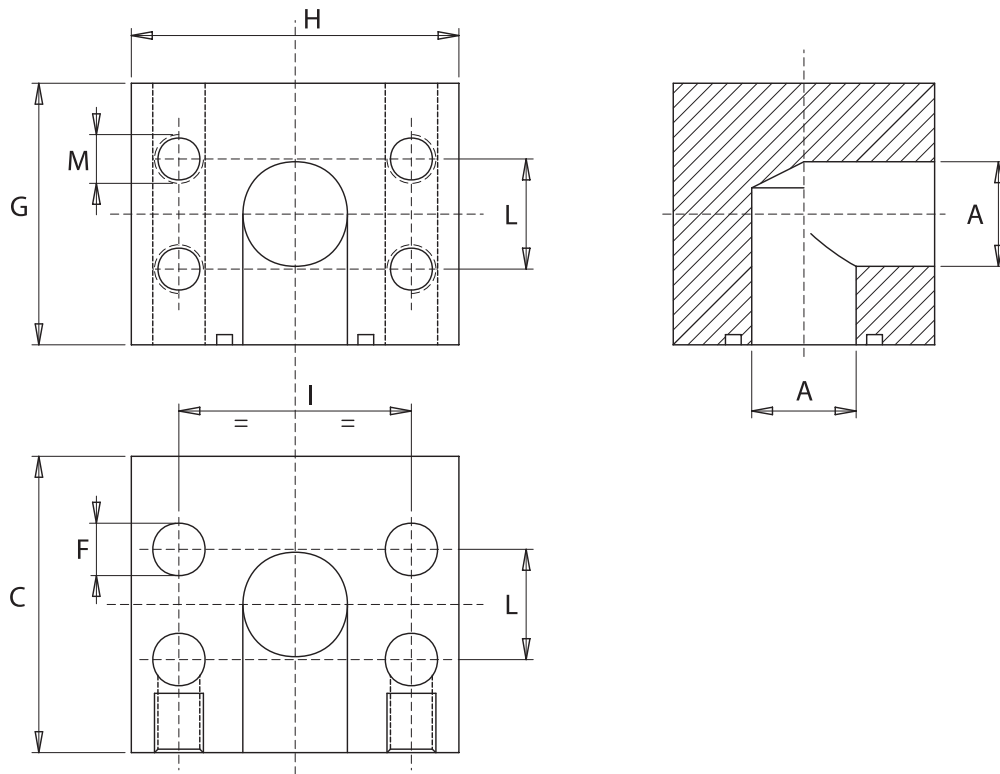
| PRESS. MAX bar | TIPO TYPE | TAGLIA SIZE | A | B | C | D | E | L | O-Rings |
|----------------|------------|-------------|----|----|-------|-------|------|-----|---------|
| 420 | CST6021012 | 1/2" | 22 | 13 | 31,8 | 24 | 7,7 | 45 | 4075 |
| 420 | CST6027034 | 3/4" | 28 | 18 | 41,3 | 32 | 8,7 | 50 | 4100 |
| 420 | CST6033100 | 1" | 35 | 22 | 47,6 | 38 | 9,5 | 55 | 4131 |
| 420 | CST6042114 | 1 1/4" | 44 | 29 | 54 | 44 | 10,3 | 60 | 4150 |
| 420 | CST6049112 | 1 1/2" | 51 | 35 | 63,5 | 51 | 12,5 | 65 | 4187 |
| 420 | CST6060200 | 2" | 61 | 43 | 79,4 | 67 | 12,5 | 70 | 4225 |
| 420 | CST6075212 | 2 1/2" | 74 | 45 | 107,8 | 88,9 | 20,6 | 90 | 4275 |
| 420 | CST6090300 | 3" | 90 | 58 | 131,7 | 113,8 | 25,6 | 110 | 4337 |

Esempio codice di ordinazione - *Ordering example*

CST 6049 112 - A Con sede O-Ring
B With O-Ring seat
 Senza sede O-Ring
 Without O-Ring seat

Codulo Adaptor

Materiale: acciaio
 Material: steel



3000 psi

| PRESS. MAX bar | TIPO TYPE | SAE | A | C | F | G | H | I | L | M | O-Rings |
|----------------|------------|--------|----|----|------|----|-----|-------|-------|-----|---------|
| 210 | LB 304 114 | 1 1/4" | 31 | 80 | 11 | 80 | 80 | 58,72 | 30,18 | M10 | 4150 |
| 210 | LB 306 112 | 1 1/2" | 38 | 94 | 13,5 | 94 | 94 | 69,85 | 35,71 | M12 | 4187 |
| 210 | LB 308 200 | 2" | 50 | 87 | 13,5 | 87 | 103 | 77,77 | 42,88 | M12 | 4225 |

6000 psi

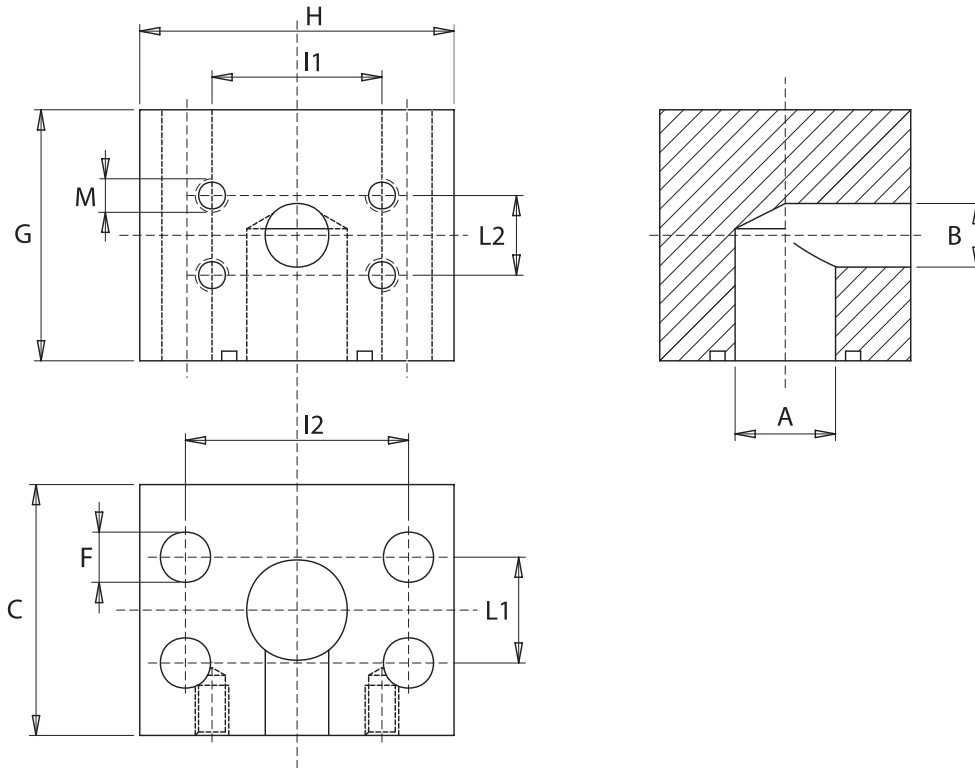
| PRESS. MAX bar | TIPO TYPE | SAE | A | C | F | G | H | I | L | M | O-Rings |
|----------------|------------|--------|----|-----|----|-----|-----|-------|-------|-----|---------|
| 420 | LB 600 034 | 3/4" | 19 | 60 | 11 | 55 | 70 | 50,80 | 23,80 | M10 | 4100 |
| 420 | LB 602 100 | 1" | 25 | 69 | 13 | 69 | 80 | 57,15 | 27,76 | M12 | 4131 |
| 420 | LB 604 114 | 1 1/4" | 30 | 75 | 15 | 75 | 94 | 66,68 | 31,75 | M14 | 4150 |
| 420 | LB 606 112 | 1 1/2" | 38 | 89 | 17 | 89 | 106 | 79,38 | 36,50 | M16 | 4187 |
| 420 | LB 608 200 | 2" | 50 | 116 | 21 | 116 | 135 | 96,82 | 44,45 | M20 | 4225 |

Esempio codice di ordinazione - Ordering example

LB 604 114

L BLOCK

Materiale: acciaio
Material: steel



6000 psi

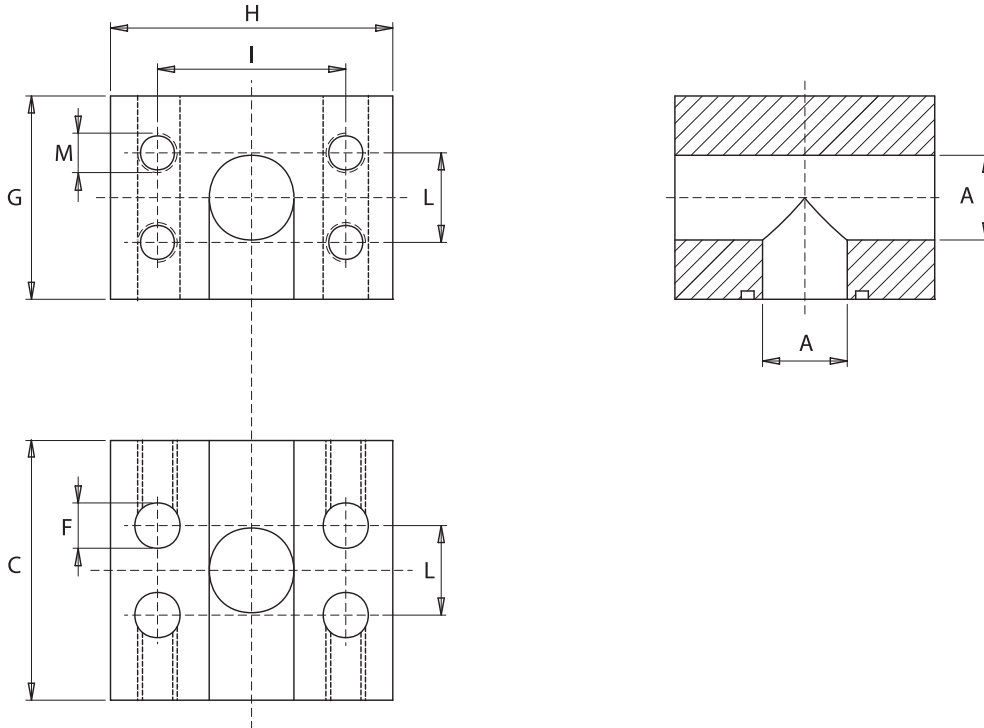
| PRESS. MAX bar | TIPO TYPE | SAE | A | B | C | F | G | H | I1 | L1 | L2 | I2 | M | O-Rings |
|----------------|--------------|--------|----|----|-----|----|-----|-----|-------|-------|-------|-------|-----|---------|
| 420 | RB403-402100 | 1" | 25 | 19 | 69 | 13 | 69 | 80 | 50,80 | 27,76 | 23,80 | 57,15 | M10 | 4131 |
| 420 | RB404-402114 | 1 1/4" | 30 | 19 | 75 | 15 | 75 | 94 | 50,80 | 31,75 | 23,80 | 66,68 | M10 | 4150 |
| 420 | RB404-403114 | 1 1/4" | 30 | 25 | 75 | 15 | 75 | 94 | 57,15 | 31,75 | 27,76 | 66,68 | M12 | 4150 |
| 420 | RB405-404112 | 1 1/2" | 38 | 30 | 89 | 17 | 89 | 106 | 66,68 | 36,50 | 31,75 | 79,38 | M14 | 4187 |
| 420 | RB406-405200 | 2" | 50 | 38 | 116 | 21 | 116 | 135 | 79,38 | 44,45 | 36,50 | 96,82 | M16 | 4225 |

Esempio codice di ordinazione - *Ordering example*

RB 403 - 402100

T BLOCK

Materiale: acciaio
 Material: steel



6000 psi

| PRESS. MAX bar | TIPO TYPE | SAE | A | C | F | G | H | I | L | M | O-Rings |
|----------------|--------------|--------|----|-----|----|-----|-----|-------|-------|-----|---------|
| 420 | TB600-600034 | 3/4" | 19 | 70 | 11 | 55 | 70 | 50,80 | 23,80 | M10 | 4100 |
| 420 | TB602-602100 | 1" | 25 | 80 | 13 | 69 | 80 | 57,15 | 27,76 | M12 | 4131 |
| 420 | TB604-604114 | 1 1/4" | 30 | 94 | 15 | 75 | 94 | 66,68 | 31,75 | M14 | 4150 |
| 420 | TB606-606112 | 1 1/2" | 38 | 106 | 17 | 100 | 106 | 79,38 | 36,50 | M16 | 4187 |
| 420 | TB608-608200 | 2" | 50 | 140 | 21 | 116 | 135 | 96,82 | 44,45 | M20 | 4225 |

Esempio codice di ordinazione - Ordering example

TB 602 - 602100

T BLOCK

I raccordi per pompe ad ingranaggi sono realizzati in acciaio e alluminio, normali e a 90°.

Couplings for pumps and gears are made of steel and aluminum, normal and 90°.

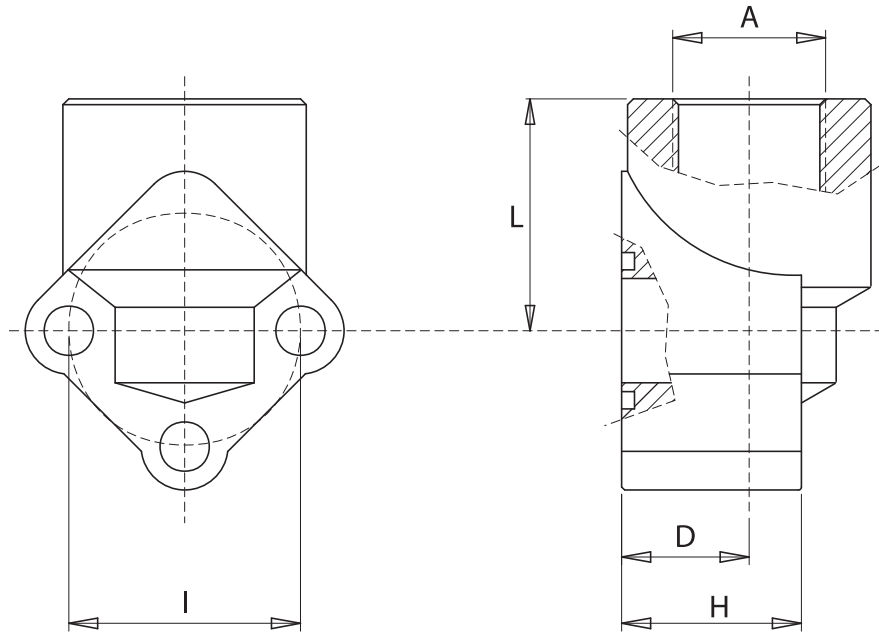


RACCORDI PER POMPE
AD INGRANAGGI

COUPLINGS
FOR GEAR PUMPS



Materiale: alluminio
Material: aluminium



| Press. max bar | Tipo Type | Gruppo pompa Pump size | A BSP | I | D | H | L | N. fori Fixing holes | Viti Screws | O-Rings |
|----------------|-----------|------------------------|--------|-------|------|----|----|----------------------|-------------|---------|
| 180 | RP05-038 | 0.5 | 3/8" | 26 | 18 | 24 | 30 | 3 | M5x35 | 2056 |
| 180 | RP05-012 | 0.5 | 1/2" | 26 | 18 | 24 | 30 | 3 | M5x35 | 2056 |
| 180 | RP1-038 | 1 | 3/8" | 30 | 18 | 26 | 30 | 3 | M6x35 | 121 |
| 180 | RP1-012 | 1 | 1/2" | 30 | 18 | 26 | 30 | 3 | M6x35 | 121 |
| 180 | RP2-012 | 2 | 1/2" | 40 | 20 | 31 | 40 | 3 | M8x45 | 130 |
| 180 | RP2-034 | 2 | 3/4" | 40 | 20 | 31 | 40 | 3 | M8x45 | 130 |
| 180 | RP3-034 | 3 | 3/4" | 51÷56 | 26 | 43 | 46 | 3 | M10x60 | 4118 |
| 180 | RP3-100 | 3 | 1" | 51÷56 | 26 | 43 | 46 | 3 | M10x60 | 4118 |
| 180 | RP35-114 | 3.5 | 1 1/4" | 62 | 33.5 | 17 | 57 | 2 | M12x35 | 4143 |
| 180 | RP4-112 | 4 | 1 1/2" | 72.5 | 38 | 17 | 64 | 2 | M12x35 | 4175 |

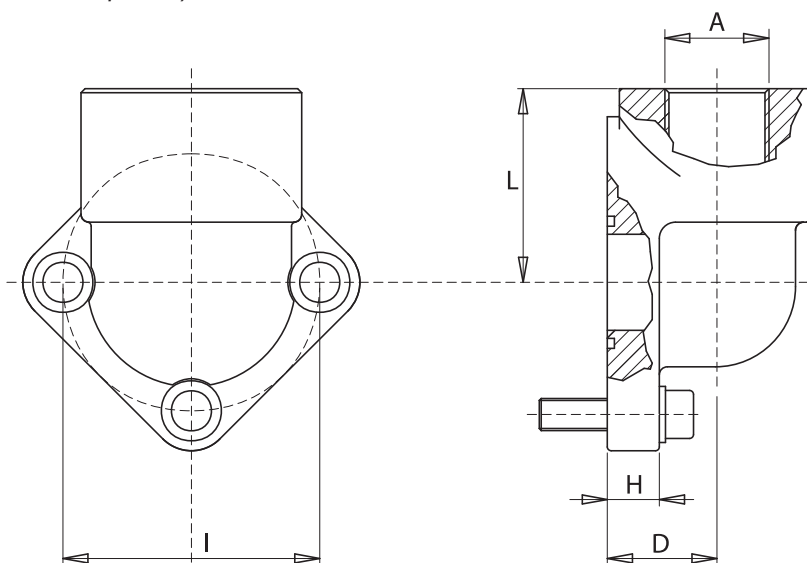
Esempio codice di ordinazione - Ordering example

RP 1 - 012 - M

Raccordo
Coupling

Viti metriche, rondelle, O-Rings
Metrical screws, washers, O-Rings
(zincate bianche - white zinc plated)

Materiale: acciaio (zincato bianco)
 Material: steel (white zinc plated)



| Tipo Type | Gruppo pompa Pump size | A | I | D | H | L | N. fori Fixing | Viti Screws holes | O-Rings |
|--------------|---------------------------|--------|------|----|----|----|-------------------|-------------------------|---------|
| RPA05-038 | 0.5 | 3/8" | 26 | 17 | 10 | 27 | 3 | M5x20 | 2056 |
| RPA05-012 | 0.5 | 1/2" | 26 | 17 | 10 | 27 | 3 | M5x20 | 2056 |
| RPA1-038 | 1 | 3/8" | 30 | 17 | 10 | 27 | 3 | M6x20 | 121 |
| RPA1-012 | 1 | 1/2" | 30 | 17 | 10 | 27 | 3 | M6x20 | 121 |
| RPA2-038 | 2 | 3/8" | 4 | 21 | 11 | 36 | 3 | M8x25 | 132 |
| RPA2-012 | 2 | 1/2" | 40 | 21 | 11 | 36 | 3 | M8x25 | 132 |
| RPA2-034 | 2 | 3/4" | 40 | 21 | 11 | 36 | 3 | M8x25 | 132 |
| RPA3-034 | 3 | 3/4" | 51 | 27 | 15 | 46 | 3 | M10x30 | 4118 |
| RPA3-100 | 3 | 1" | 51 | 27 | 15 | 46 | 3 | M10x30 | 4118 |
| RPA3-034B | 3 | 3/4" | 56 | 27 | 15 | 46 | 3 | M10x30 | 4118 |
| RPA3-100B | 3 | 1" | 56 | 27 | 15 | 46 | 3 | M10x30 | 4118 |
| RPA35-100M10 | 3.5 | 1" | 62 | 36 | 16 | 56 | 3 | M10x30 | 4150 |
| RPA35-114M10 | 3.5 | 1 1/4" | 62 | 36 | 16 | 56 | 3 | M10x30 | 4150 |
| RPA35-100M12 | 3.5 | 1" | 62 | 36 | 16 | 56 | 3 | M12x35 | 4150 |
| RPA35-114M12 | 3.5 | 1 1/4" | 62 | 36 | 16 | 56 | 3 | M12x35 | 4150 |
| RPA4-114 | 4 | 1 1/4" | 72.5 | 37 | 17 | 56 | 3 | M12x35 | 153 |
| RPA4-112 | 4 | 1 1/2" | 72.5 | 37 | 17 | 56 | 3 | M12x35 | 153 |
| RPA6-212 | - | 2 1/2" | 92 | 52 | 18 | 75 | 3 | M12x40 | 4275 |

Esempio codice di ordinazione - Ordering example

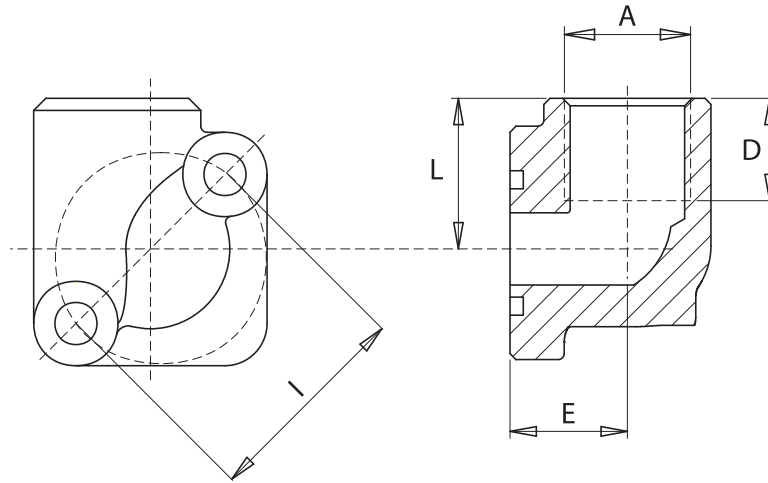
RPA 2 - 034 - M

Raccordo
Coupling

Viti metriche, rondelle, O-Rings
 Metrical screws, washers, O-Rings
 (zincate bianche - white zinc plated)

RPA35 - RPA4 - RPA6
 Forniti in ghisa - Made of cast iron

Materiale: alluminio
Material: aluminium



| Press. max bar | Tipo Type | A | I | L | D | E | Viti Screws | O-Rings |
|----------------|------------|------|----|----|----|------|-------------|---------|
| 180 | 1 RA - 038 | 3/8" | 30 | 22 | 17 | 17 | M6x35 | 121 |
| 180 | 1 RA - 012 | 1/2" | 30 | 22 | 17 | 17 | M6x35 | 121 |
| 180 | 2 RA - 038 | 3/8" | 35 | 24 | 17 | 19.5 | M6x40 | 3075 |
| 180 | 2 RA - 012 | 1/2" | 35 | 24 | 17 | 19.5 | M6x40 | 3075 |

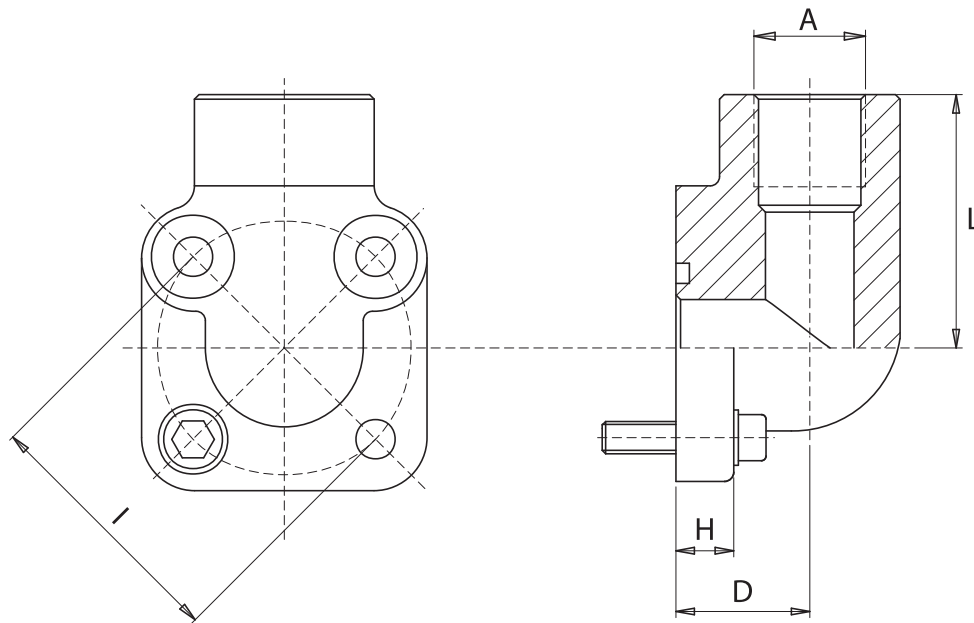
Esempio codice di ordinazione - *Ordering example*

1 RA - 012 - M

Raccordo
Coupling

Viti metriche, rondelle, O-Rings
Metrical screws, washers, O-Rings
(zincate bianche - white zinc plated)

Materiale: acciaio (zincato bianco)
 Material: steel (white zinc plated)



| Press. max bar | Tipo Type | I | A BSP | D | H | L | Viti / Screws | | O-Rings |
|----------------|------------|----|-------|----|----|------|---------------|-------|---------|
| | | | | | | | N 2 | N 2 | |
| 315 | RIA 30-038 | 30 | 3/8" | 19 | 11 | 40 | M6x20 | M6x35 | 121 |
| 315 | RIA 30-012 | 30 | 1/2" | 19 | 11 | 40 | M6x20 | M6x35 | 121 |
| 315 | RIA 35-038 | 35 | 3/8" | 19 | 13 | 40 | M6x20 | M6x35 | 3075 |
| 315 | RIA 35-012 | 35 | 1/2" | 19 | 13 | 40 | M6x20 | M6x35 | 3075 |
| 250 | RIA 40-038 | 40 | 3/8" | 24 | 13 | 42.5 | M6x25 | M6x45 | 132 |
| 250 | RIA 40-012 | 40 | 1/2" | 24 | 13 | 42.5 | M6x25 | M6x45 | 132 |
| 250 | RIA 40-034 | 40 | 3/4" | 24 | 13 | 42.5 | M6x25 | M6x45 | 132 |
| 250 | RIA 55-012 | 55 | 1/2" | 34 | 13 | 54 | M8x25 | M8x60 | 4118 |
| 250 | RIA 55-034 | 55 | 3/4" | 34 | 13 | 54 | M8x25 | M8x60 | 4118 |
| 250 | RIA 55-100 | 55 | 1" | 34 | 13 | 54 | M8x25 | M8x60 | 4118 |

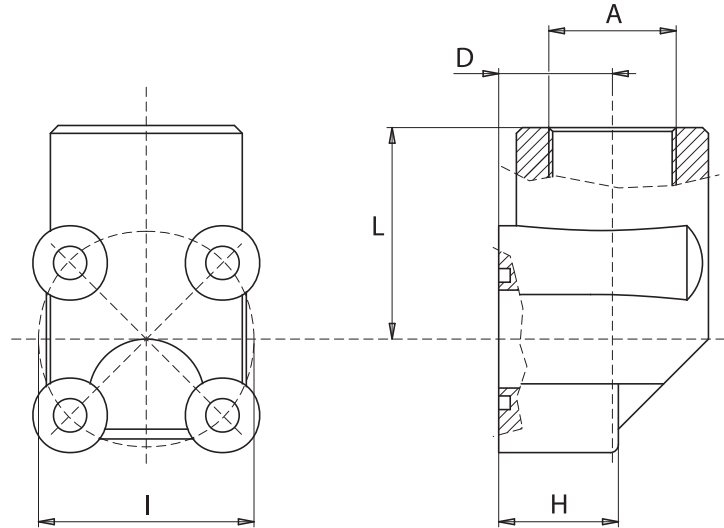
Esempio codice di ordinazione - Ordering example

RIA 55 - 100 - M

Raccordo
Coupling

Viti metriche, rondelle, O-Rings
 Metrical screws, washers, O-Rings
 (zincate bianche - white zinc plated)

Materiale: alluminio
Material: aluminium



| Press. max bar | Tipo Type | A BSP | I | D | H | L | N. fori Fixing holes | Viti / Screws | | O-Rings |
|----------------|-----------|-------|----|----|----|------|----------------------|---------------|-------|---------|
| | | | | | | | | N2 | N2 | |
| 180 | RB 038-30 | 3/8" | 30 | 18 | 18 | 40 | 4 | M6x30 | M6x45 | 121 |
| 180 | RB 012-30 | 1/2" | 30 | 18 | 18 | 40 | 4 | M6x30 | M6x45 | 121 |
| 180 | RB 038-35 | 3/8" | 35 | 18 | 18 | 42.5 | 4 | M6x30 | M6x45 | 3075 |
| 180 | RB 012-35 | 1/2" | 35 | 18 | 18 | 42.5 | 4 | M6x30 | M6x45 | 3075 |
| 180 | RB 012-40 | 1/2" | 40 | 24 | 24 | 47.5 | 4 | M6x35 | M6x55 | 130 |
| 180 | RB 034-40 | 3/4" | 40 | 24 | 24 | 47.5 | 4 | M6x35 | M6x55 | 130 |
| 180 | RB 034-55 | 3/4" | 55 | 29 | 31 | 54 | 4 | M8x45 | M8x60 | 4118 |
| 180 | RB 100-55 | 1" | 55 | 29 | 31 | 54 | 4 | M8x45 | M8x60 | 4118 |

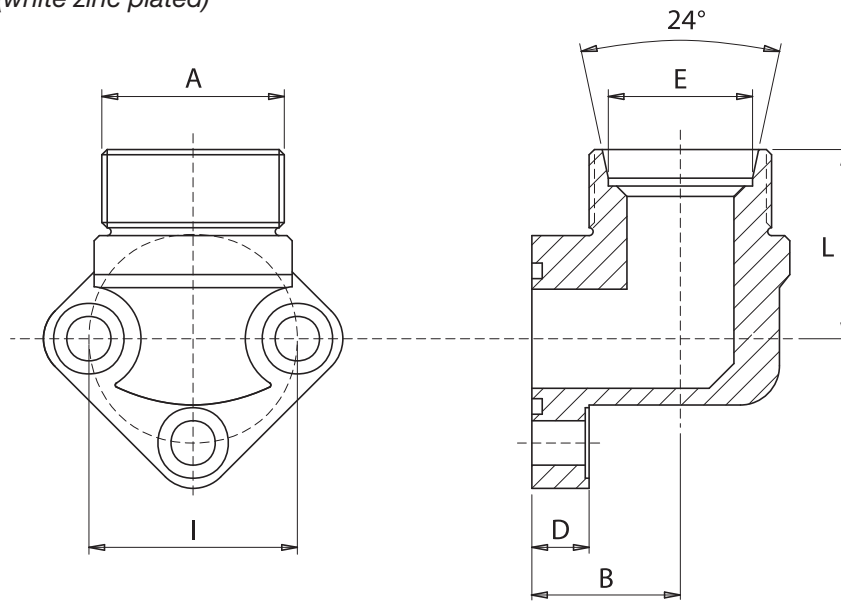
Esempio codice di ordinazione - Ordering example

RB 034 - 40 - M

Raccordo
Coupling

Viti metriche, rondelle, O-Rings
Metrical screws, washers, O-Rings
(zincate bianche - white zinc plated)

Materiale: acciaio (zincato bianco)
 Material: steel (white zinc plated)



| Press. max bar | Tipo Type | A | I | L | D | E | B | Viti Screws | O-Rings |
|----------------|--------------|---------|----|----|----|----|----|-------------|---------|
| 300 | 1 RGAT 10/26 | M16x1.5 | 26 | 28 | 10 | 10 | 17 | M5x20 | 2056 |
| 300 | 1 RGAT 12/26 | M18x1.5 | 26 | 28 | 10 | 12 | 17 | M5x20 | 2056 |
| 300 | 1 RGAT 15/26 | M22x1.5 | 26 | 28 | 10 | 15 | 17 | M5x20 | 2056 |
| 300 | 1 RGAT 16/26 | M24x1.5 | 26 | 28 | 10 | 16 | 17 | M5x20 | 2056 |
| 300 | 1 RGAT 18/26 | M26x1.5 | 26 | 28 | 10 | 18 | 17 | M5x20 | 2056 |
| 300 | 1 RGAT 10/30 | M16x1.5 | 30 | 28 | 10 | 10 | 17 | M6x20 | 121 |
| 300 | 1 RGAT 12/30 | M18x1.5 | 30 | 28 | 10 | 12 | 17 | M6x20 | 121 |
| 300 | 1 RGAT 15/30 | M22x1.5 | 30 | 28 | 10 | 15 | 17 | M6x20 | 121 |
| 300 | 1 RGAT 16/30 | M24x1.5 | 30 | 28 | 10 | 16 | 17 | M6x20 | 121 |
| 300 | 1 RGAT 18/30 | M26x1.5 | 30 | 28 | 10 | 18 | 17 | M6x20 | 121 |
| 200 | 2 RGAT 15/40 | M22x1.5 | 40 | 36 | 11 | 15 | 22 | M8x25 | 132 |
| 200 | 2 RGAT 16/40 | M24x1.5 | 40 | 36 | 11 | 16 | 22 | M8x25 | 132 |
| 200 | 2 RGAT 18/40 | M26x1.5 | 40 | 36 | 11 | 18 | 22 | M8x25 | 132 |
| 200 | 2 RGAT 20/40 | M30x2 | 40 | 36 | 11 | 20 | 22 | M8x25 | 132 |
| 200 | 2 RGAT 22/40 | M30x2 | 40 | 36 | 11 | 22 | 22 | M8x25 | 132 |
| 200 | 2 RGAT 28/40 | M36x2 | 40 | 36 | 11 | 28 | 28 | M8x25 | 132 |
| 200 | 3 RGAT 20/51 | M30x2 | 51 | 46 | 15 | 20 | 27 | M10x30 | 4118 |
| 200 | 3 RGAT 25/51 | M36x2 | 51 | 46 | 15 | 25 | 27 | M10x30 | 4118 |
| 200 | 3 RGAT 30/51 | M42x2 | 51 | 45 | 15 | 30 | 27 | M10x30 | 4118 |

Esempio codice di ordinazione - Ordering example

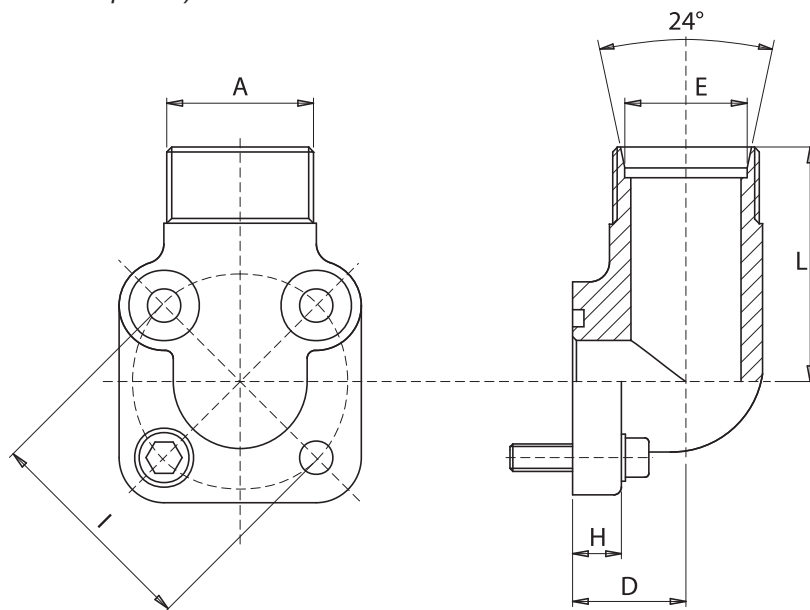
1 RGAT 18/30 - M K

Raccordo
Coupling

Su richiesta: - Under request:
 Dado e ogiva - Nut and ring

Viti metriche, rondelle, O-Rings
 Metrical screws, washers, O-Rings
 (zincate bianche - white zinc plated)

Materiale: acciaio (zincato bianco)
 Material: steel (white zinc plated)



| Press. max bar | Tipo Type | I | A | E | D | H | L | Viti / Screws | | O-Rings |
|----------------|-----------|----|---------|----|----|------|------|---------------|-------|---------|
| | | | | | | | | N 2 | N 2 | |
| 300 | RBA 35/10 | 35 | M16x1.5 | 10 | 18 | 11.5 | 40 | M6x20 | M6x35 | 3075 |
| 300 | RBA 35/12 | 35 | M18x1.5 | 12 | 18 | 11.5 | 40 | M6x20 | M6x35 | 3075 |
| 300 | RBA 35/15 | 35 | M22x1.5 | 15 | 18 | 11.5 | 40 | M6x20 | M6x35 | 3075 |
| 300 | RBA 35/16 | 35 | M24x1.5 | 16 | 18 | 11.5 | 40 | M6x20 | M6x35 | 3075 |
| 100 | RBA 40/15 | 40 | M22x1.5 | 15 | 24 | 13 | 44 | M6x25 | M6x45 | 132 |
| 100 | RBA 40/18 | 40 | M26x1.5 | 18 | 24 | 13 | 40 | M6x25 | M6x45 | 132 |
| 100 | RBA 40/20 | 40 | M30x2 | 20 | 24 | 13 | 40 | M6x25 | M6x45 | 132 |
| 100 | RBA 40/22 | 40 | M30x2 | 22 | 24 | 13 | 40 | M6x25 | M6x45 | 132 |
| 100 | RBA 40/28 | 40 | M36x2 | 28 | 28 | 16 | 41.5 | M6x25 | M6x50 | 132 |
| 100 | RBA 40/35 | 40 | M45x2 | 35 | 32 | 16 | 41.5 | M6x25 | M6x50 | 132 |
| 250 | RBA 55/20 | 55 | M30x2 | 20 | 34 | 13 | 54 | M8x25 | M8x60 | 4118 |
| 250 | RBA 55/25 | 55 | M36x2 | 25 | 34 | 13 | 54 | M8x25 | M8x60 | 4118 |
| 250 | RBA 55/30 | 55 | M42x2 | 30 | 34 | 13 | 54 | M8x25 | M8x60 | 4118 |
| 200 | RBA 55/38 | 55 | M52x2 | 38 | 43 | 12 | 52 | M8x25 | M8x70 | 4118 |
| 100 | RBA 55/42 | 55 | M52x2 | 42 | 43 | 12 | 52 | M8x25 | M8x70 | 4118 |

Esempio codice di ordinazione - Ordering example

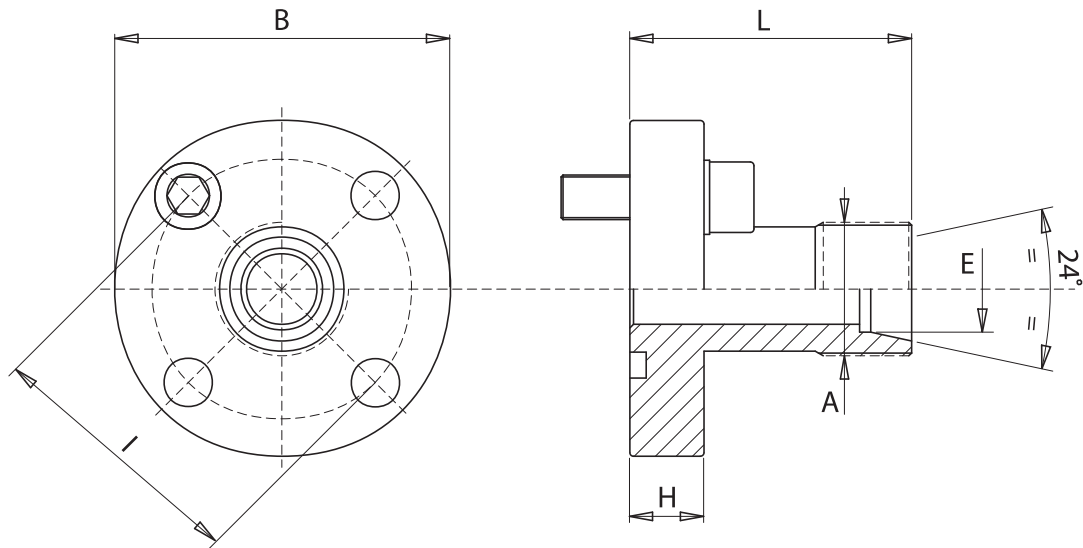
RBA 40/28 - M K

Raccordo
Coupling

Su richiesta - Under request:
Dado e ogiva - Nut and ring

Viti metriche, rondelle, O-Rings
Metrical screws, washers, O-Rings
(zincate bianche - white zinc plated)

Materiale: acciaio (zincato bianco)
 Material: steel (white zinc plated)



| Press. max bar | Tipo Type | I | B | A | E | H | L | Screws | Viti O-Rings |
|----------------|------------|----|----|---------|----|----|----|--------|--------------|
| 315 | RDA 35/10L | 35 | 46 | M16x1.5 | 10 | 8 | 30 | M6x20 | 3075 |
| 315 | RDA 35/12L | 35 | 46 | M18x1.5 | 12 | 8 | 30 | M6x20 | 3075 |
| 250 | RDA 35/15L | 35 | 46 | M22x1.5 | 15 | 8 | 30 | M6x20 | 3075 |
| 315 | RDA 35/16S | 35 | 46 | M24x1.5 | 16 | 8 | 30 | M6x20 | 3075 |
| 100 | RDA 40/15L | 40 | 52 | M22x1.5 | 15 | 8 | 35 | M6x20 | 3100 |
| 100 | RDA 40/18L | 40 | 52 | M26x1.5 | 18 | 8 | 35 | M6x20 | 3100 |
| 250 | RDA 40/20S | 40 | 52 | M30x2 | 20 | 8 | 35 | M6x20 | 3100 |
| 100 | RDA 40/22L | 40 | 52 | M30x2 | 22 | 8 | 35 | M6x20 | 3100 |
| 100 | RDA 40/28L | 40 | 52 | M36x2 | 28 | 8 | 40 | M6x20 | 3100 |
| 250 | RDA 55/20S | 55 | 70 | M30x2 | 20 | 12 | 50 | M8x25 | 3125 |
| 250 | RDA 55/25S | 55 | 70 | M36x2 | 25 | 12 | 50 | M8x25 | 3125 |
| 250 | RDA 55/30S | 55 | 70 | M42x2 | 30 | 12 | 50 | M8x25 | 3125 |
| 100 | RDA 55/35L | 55 | 70 | M45x2 | 35 | 12 | 50 | M8x25 | 3125 |

Esempio codice di ordinazione - Ordering example

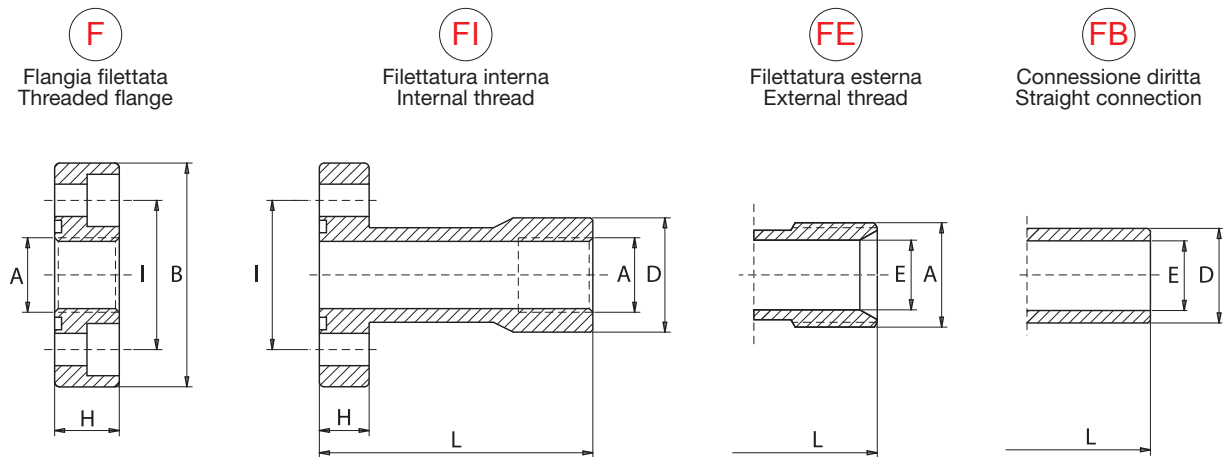
RDA 40/18L - M K

Raccordo
Coupling

Su richiesta: - Under request:
 Dado e ogiva - Nut and ring

Viti metriche, rondelle, O-Rings
 Metrical screws, washers, O-Rings
 (zincate bianche - white zinc plated)

Materiale: acciaio (zincato bianco)
 Material: steel (white zinc plated)



| Tipo Type | Gruppo pompa Pump size | I | B | L | D | E | A BSP | H | Fixing | N. fori Screws holes | Viti O-Rings |
|--------------|------------------------------|------|----|----|------|------|----------|----|--------|----------------------------|-----------------|
| F1-038 | 1 | 30 | 45 | - | - | - | 3/8" | 13 | 4 | M6x16 | 2075 |
| FI1-038 | 1 | 30 | 40 | 55 | 23 | - | 3/8" | 10 | 4 | M6x20 | 2075 |
| FE1-012 | 1 | 30 | 40 | 55 | - | 14 | 1/2" | 10 | 4 | M6x20 | 2075 |
| FB1 | 1 | 30 | 40 | 55 | 19 | 14 | - | 10 | 4 | M6x20 | 2075 |
| F2-012 | 2 | 40 | 58 | - | - | - | 1/2" | 15 | 4 | M8x20 | 2100 |
| FI2-012 | 2 | 40 | 54 | 60 | 28.5 | - | 1/2" | 12 | 4 | M8x25 | 2100 |
| FE2-034 | 2 | 40 | 54 | 60 | - | 19 | 3/4" | 12 | 4 | M8x25 | 2100 |
| FB2 | 2 | 40 | 54 | 60 | 25.4 | 19 | - | 12 | 4 | M8x25 | 2100 |
| F3-034 | 3 A | 51 | 76 | - | - | - | 3/4" | 18 | 4 | M10x25 | 3125 |
| FI3-034 | 3 A | 51 | 70 | 72 | 33.5 | - | 3/4" | 16 | 4 | M10x30 | 3125 |
| FE3-100 | 3 A | 51 | 70 | 72 | - | 24 | 1" | 16 | 4 | M10x30 | 3125 |
| FB3 | 3 A | 51 | 70 | 72 | 32 | 24.5 | - | 16 | 4 | M10x30 | 3125 |
| F3-034B | 3 B | 56 | 76 | - | - | - | 3/4" | 18 | 4 | M10x25 | 3125 |
| FI3-034B | 3 B | 56 | 76 | 72 | 33.5 | - | 3/4" | 16 | 4 | M10x30 | 3125 |
| FE3-100B | 3 B | 56 | 76 | 72 | - | 24 | 1" | 16 | 4 | M10x30 | 3125 |
| FB3B | 3 B | 56 | 76 | 72 | 32 | 24.5 | - | 16 | 4 | M10x30 | 3125 |
| F35-100M10 | 3.5 A | 62 | 88 | - | - | - | 1" | 20 | 4 | M10x30 | 144 |
| F35-100M12 | 3.5 B | 62 | 88 | - | - | - | 1" | 20 | 4 | M12x35 | 144 |
| F4-114 | 4 | 72.5 | 98 | - | - | - | 1 1/4" | 22 | 4 | M12x35 | 4187 |

Esempio codice di ordinazione - *Ordering example*

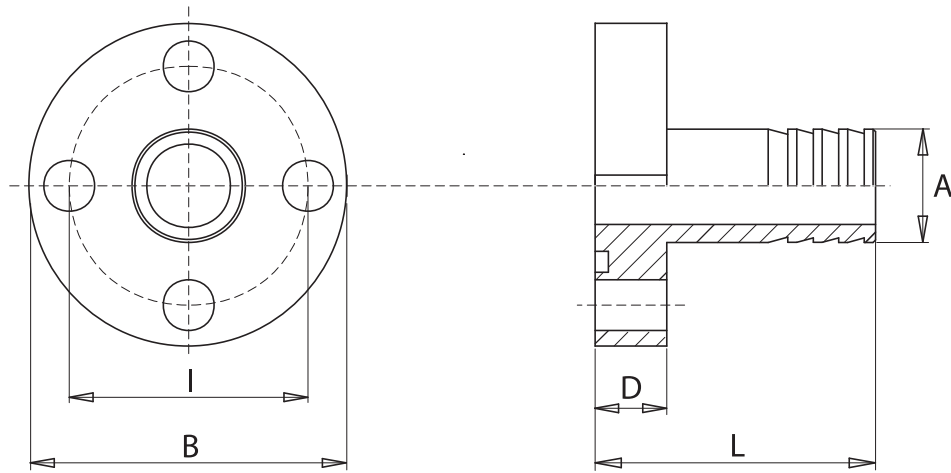
FI3-034 - M

Raccordo
Coupling

Viti metriche, rondelle, O-Rings
 Metrical screws, washers, O-Rings
 (zincate bianche - white zinc plated)

Rondelle non presenti nel kit flange tipo "F"
 Washers not included inside the kit for "F" type flanges

Materiale: acciaio (zincato bianco)
 Material: steel (white zinc plated)



| Tipo Type | A | B | D | I | L | Viti Screws | O-Rings |
|---------------|----|----|----|----|----|----------------|---------|
| 1 RPGA 012/30 | 15 | 40 | 10 | 30 | 40 | M6x20 | 121 |
| 1 RPGA 034/30 | 19 | 40 | 10 | 30 | 40 | M6x20 | 121 |
| 2 RPGA 034/40 | 19 | 54 | 12 | 40 | 47 | M8x25 | 132 |
| 2 RPGA 100/40 | 25 | 54 | 12 | 40 | 47 | M8x25 | 132 |
| 3 RPGA 114/51 | 32 | 70 | 14 | 51 | 59 | M10x30 | 4118 |
| 3 RPGA 114/56 | 32 | 75 | 14 | 56 | 59 | M10x30 | 4137 |

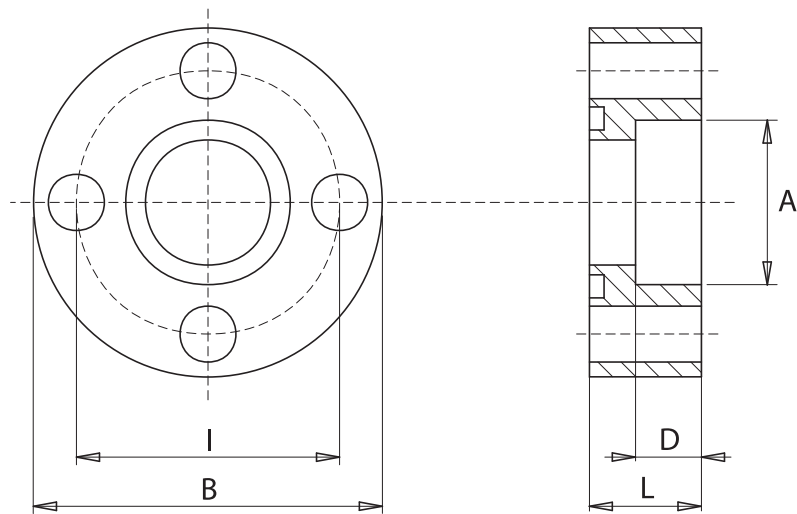
Esempio codice di ordinazione - Ordering example

1 RPGA 012/30 - M

Raccordo
Coupling

Viti metriche, rondelle, O-Rings
 Metrical screws, washers, O-Rings
 (zincate bianche - white zinc plated)

Materiale: acciaio
Material: steel



| Tipo Type | A | B | D | I | L | Viti Screws | O-Rings |
|---------------|----|-----|----|------|------|----------------|---------|
| RSA 12/26 | 12 | 35 | 5 | 26 | 10 | M5x20 | 2056 |
| RSA 12/30 | 12 | 40 | 6 | 30 | 11 | M6x20 | 121 |
| RSA 15/30 | 15 | 40 | 6 | 30 | 11 | M6x20 | 121 |
| RSA 15/35 | 15 | 46 | 6 | 35 | 11 | M6x20 | 3075 |
| RSA 12/40 M6 | 12 | 52 | 10 | 40 | 17 | M6x30 | 132 |
| RSA 12/40 M8 | 12 | 54 | 10 | 40 | 17 | M8x30 | 132 |
| RSA 25/40 | 25 | 54 | 10 | 40 | 17 | M8x30 | 132 |
| RSA 30/51 | 30 | 70 | 11 | 51 | 18.5 | M10x35 | 4118 |
| RSA 30/56 | 30 | 75 | 11 | 56 | 18.5 | M10x35 | 4137 |
| RSA 40/62 M10 | 40 | 80 | 15 | 62 | 25 | M10x40 | 4150 |
| RSA 40/62 M12 | 40 | 80 | 15 | 62 | 25 | M12x45 | 4150 |
| RSA 45/72.5 | 45 | 91 | 18 | 72.5 | 25 | M12x45 | 153 |
| RSA 77/92 | 77 | 110 | 18 | 92 | 25 | M12x45 | 4275 |

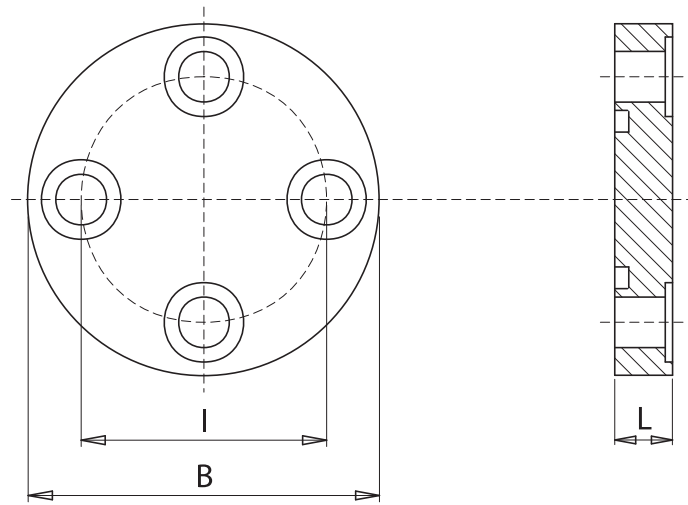
Esempio codice di ordinazione - Ordering example

RSA 30/51 - M

Raccordo
Coupling

Viti metriche, rondelle, O-Rings
Metrical screws, washers, O-Rings
(zincate bianche - white zinc plated)

Materiale: acciaio (zincato bianco)
 Material: steel (white zinc plated)



| Tipo Type | B | L | I | Viti Screws | O-Rings |
|--------------|-----|----|------|----------------|---------|
| RCA 26 | 40 | 10 | 26 | M5x20 | 2056 |
| RCA 30 | 45 | 10 | 30 | M6x20 | 121 |
| RCA 35 | 52 | 10 | 35 | M6x20 | 3075 |
| RCA 40 M6 | 54 | 12 | 40 | M6x20 | 132 |
| RCA 40 M8 | 58 | 12 | 40 | M8x25 | 132 |
| RCA 51 | 70 | 12 | 51 | M10x25 | 4118 |
| RCA 55 | 70 | 12 | 55 | M8x25 | 4118 |
| RCA 56 | 75 | 12 | 56 | M10x30 | 4137 |
| RCA 62 M10 | 85 | 14 | 62 | M10x30 | 4150 |
| RCA 62 M12 | 85 | 14 | 62 | M12x35 | 4150 |
| RCA 72.5 | 98 | 14 | 72.5 | M12x35 | 153 |
| RCA 92 | 115 | 16 | 92 | M12x35 | 4275 |

Esempio codice di ordinazione - *Ordering example*

RCA 30 - M

Raccordo
Coupling

Viti metriche, rondelle, O-Rings
 Metrical screws, washers, O-Rings
 (zincate bianche - white zinc plated)

I blocchi standard, in acciaio e in alluminio, sono di tipo 3-5. OMT Group è in grado di produrre blocchi su disegno del cliente.

Standard blocks, made of steel and aluminum, are CETOP 3-5 type. OMT Group is able to manufacture blocks on customer design.

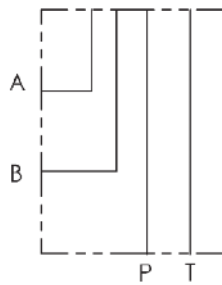
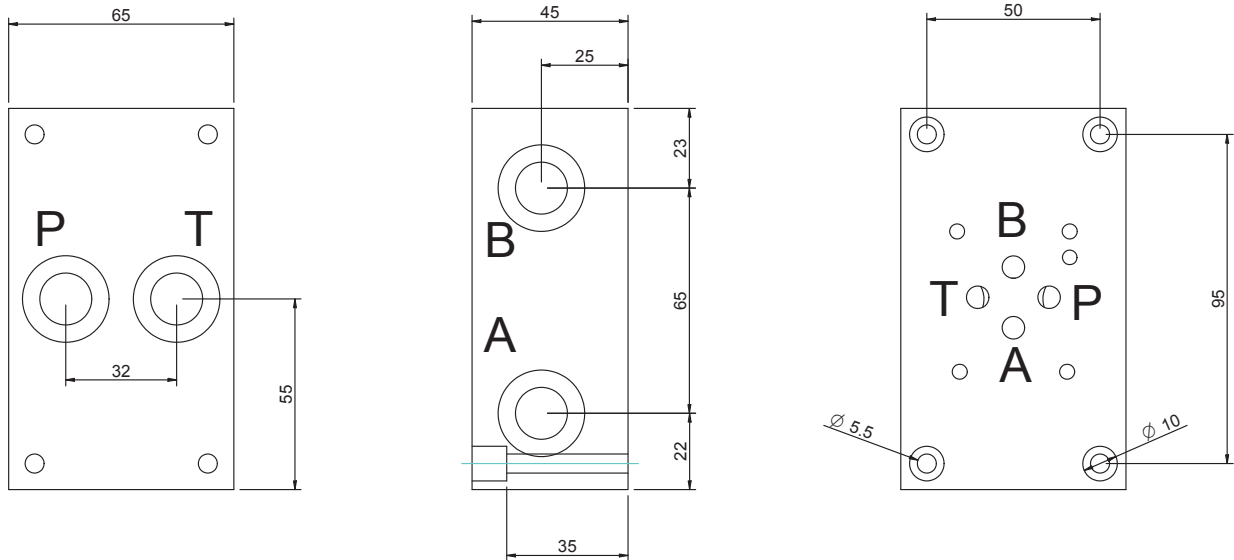


BLOCCHI CETOP CETOP MANIFOLD BLOCKS



CETOP 3 - NG 06

BASE CON COLLEGAMENTO P - T POSTERIORI E A - B LATERALI
 SINGLE SUBPLATE ON REAR P - T AND ON SIDE A - B



Versione standard in alluminio
 Standard type with aluminium

Pressione massima di lavoro = 250 bar
 Max working pressure = 250 bar

Esempio codice di ordinazione - *Ordering example*

BSA 06 # PL

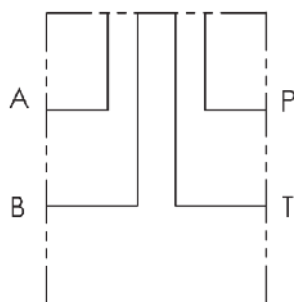
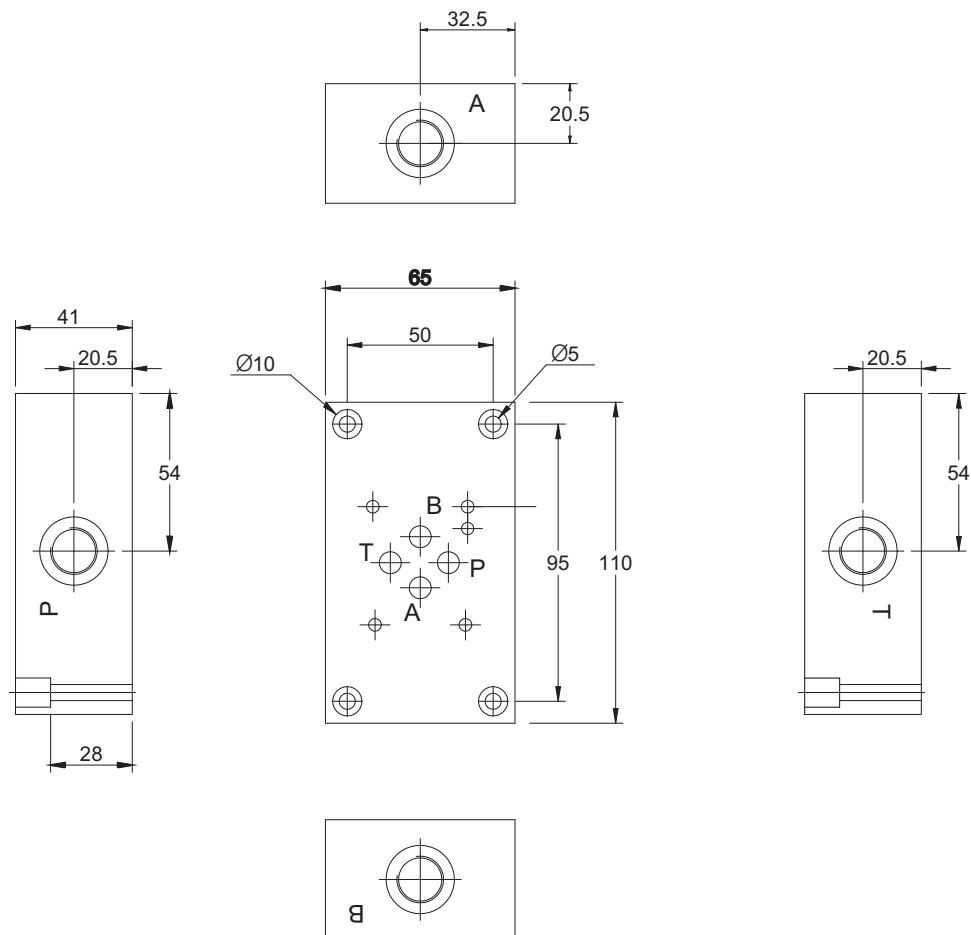
Base in alluminio
 Aluminium subplate

CETOP 3 - NG 06

A = (P - T - A - B) G1/4
 B = (P - T - A - B) G3/8

(P - T) posteriori e (A - B) laterali
 On rear (P - T) on side (A - B)

BASE CON COLLEGAMENTO P - T - A - B LATERALI A CROCE
 SINGLE SUBPLATE WITH RADIAL SIDE P - T - A - B PORTS



Versione standard in alluminio
 Standard type with aluminium

Pressione massima di lavoro = 250 bar
 Max working pressure = 250 bar

Esempio codice di ordinazione - Ordering example

BSA 06 # L

Base in alluminio
 Aluminium subplate

CETOP 3 - NG 06

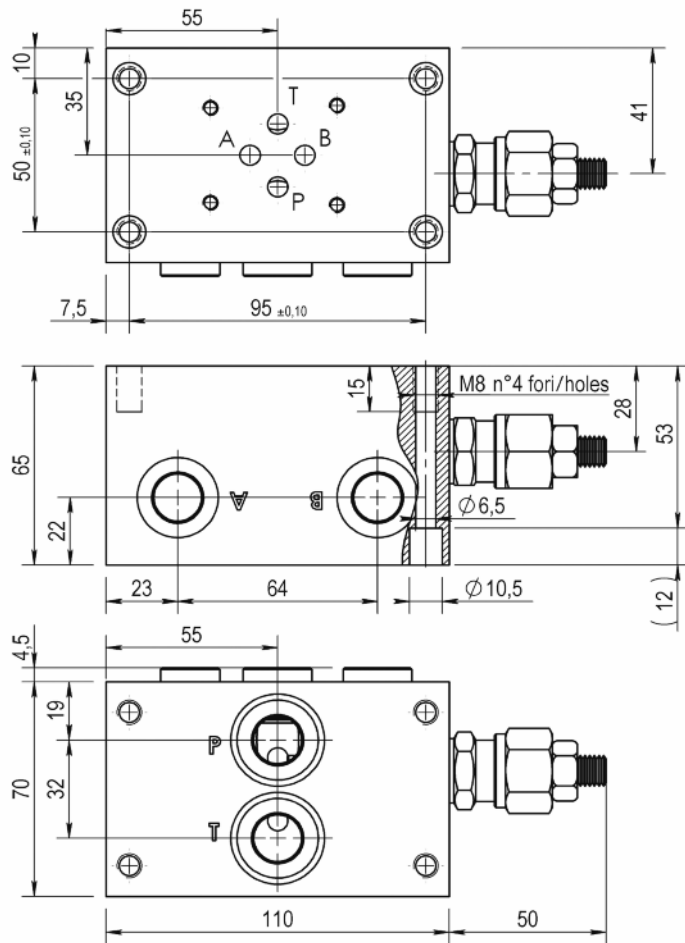
A = (P - T - A - B) G1/4
 B = (P - T - A - B) G3/8

(P - T - A - B) laterali a croce
 Radial side (P - T - A - B) ports

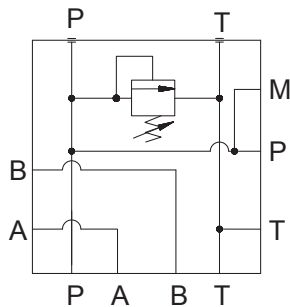
CETOP 3 - NG 06

BASE CON COLLEGAMENTO P - T POSTERIORI E A - B LATERALI
SINGLE SUBPLATE ON REAR P - T AND ON SIDE A - B

M1 = G1/4
Preso manometro
Testing point



Fornito con tappi DIN908 su P T ed M
Supplied with DIN908 caps on P T and M



Versione standard in alluminio
Standard type with aluminium

Pressione massima di lavoro = 250 bar
Max working pressure = 250 bar

Caratteristiche valvola di massima
vedere a pagina 63
For further information regarding relief
valve please see page 63

Esempio codice di ordinazione - Ordering example

BSA 06 # PL # - # — 05 = (5-50 bar)
20 = (30-210 bar)
35 = (100-350 bar)

Base in alluminio
Aluminium subplate

CETOP 3 - NG 06

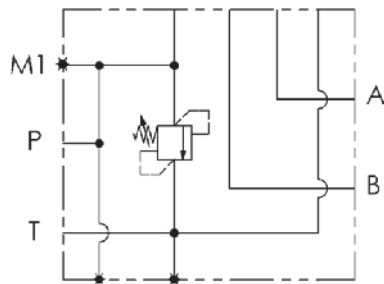
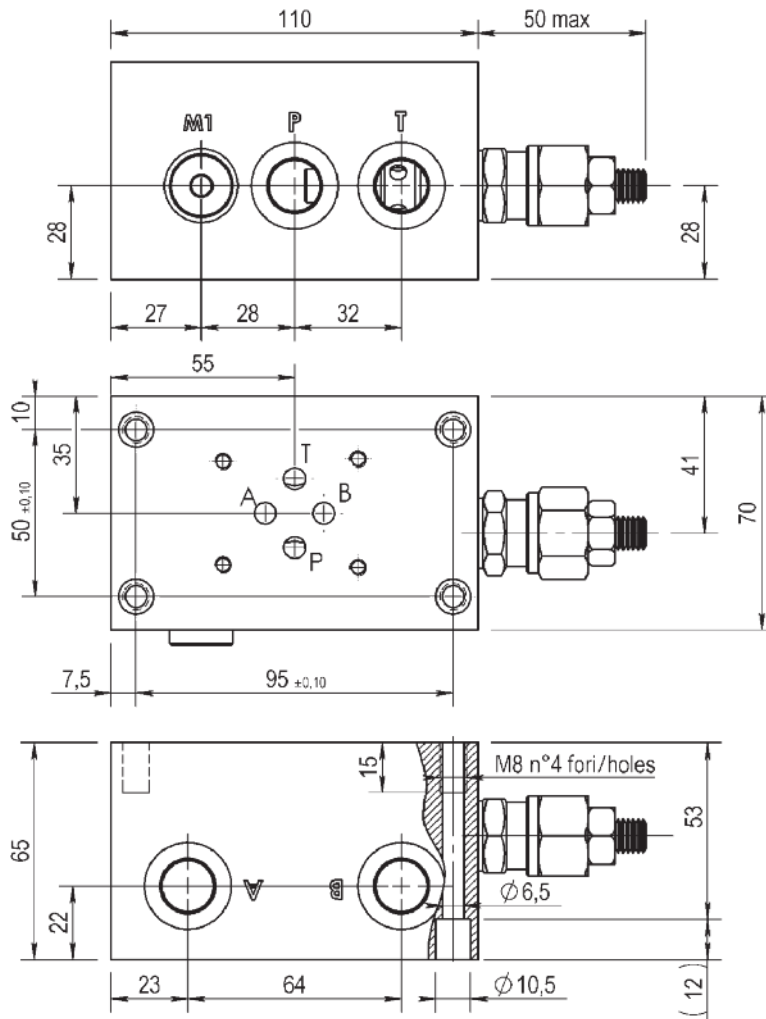
B = (P - T - A - B) G3/8

z = predisposta per valvole
machined for relief valve
x = con valvola di max
with built-in relief valve

(P - T) posteriori e (A - B) laterali
On rear (P - T) on side (A - B)

BASE CON COLLEGAMENTO P - T LATERALI E A - B LATERALI
SINGLE SUBPLATE ON SIDE P - T - A - B PORTS

M1 = G1/4
Preso manometro
Testing point



Versione standard in alluminio
Standard type with aluminium

Pressione massima di lavoro = 250 bar
Max working pressure = 250 bar

Caratteristiche valvola di massima
vedere a pagina 63
For further information regarding relief
valve please see page 63

Esempio codice di ordinazione - Ordering example

BSA 06 # LL # - # — 05 = (5-50 bar)
20 = (30-210 bar)
35 = (100-350 bar)

Base in alluminio
Aluminium subplate

CETOP 3 - NG 06

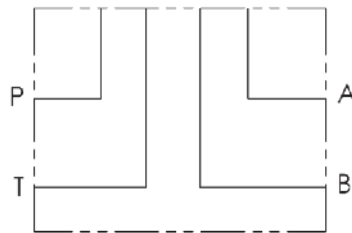
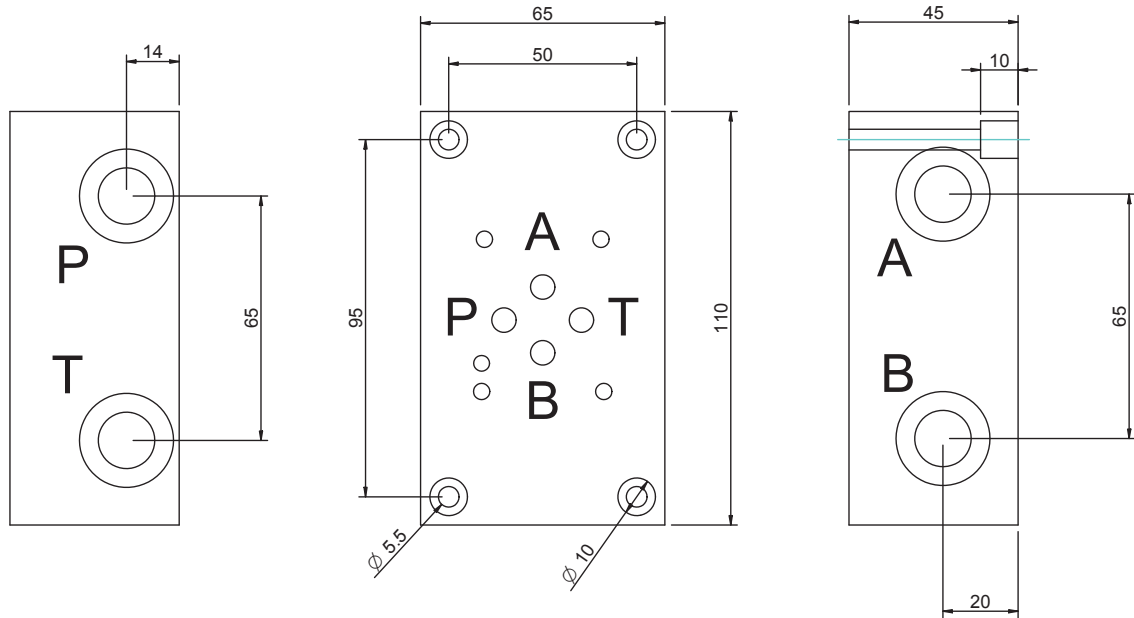
B = (P - T - A - B) G3/8

z = predisposta per valvole
machined for relief valve
x = con valvola di max
with built-in relief valve

(P - T) laterali e (A - B) laterali
On side (P - T - A - B) ports

CETOP 3 - NG 06

BASE CON COLLEGAMENTO P - T - A - B LATERALI LATO OPPOSTO
 SINGLE SUBPLATE WITH REAR ON OPPOSITE SIDE P - T - A - B PORTS



Versione standard in alluminio
 Standard type with aluminium

Pressione massima di lavoro = 250 bar
 Max working pressure = 250 bar

Esempio codice di ordinazione - *Ordering example*

BSA 06 # LL

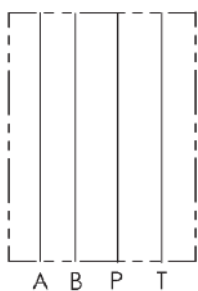
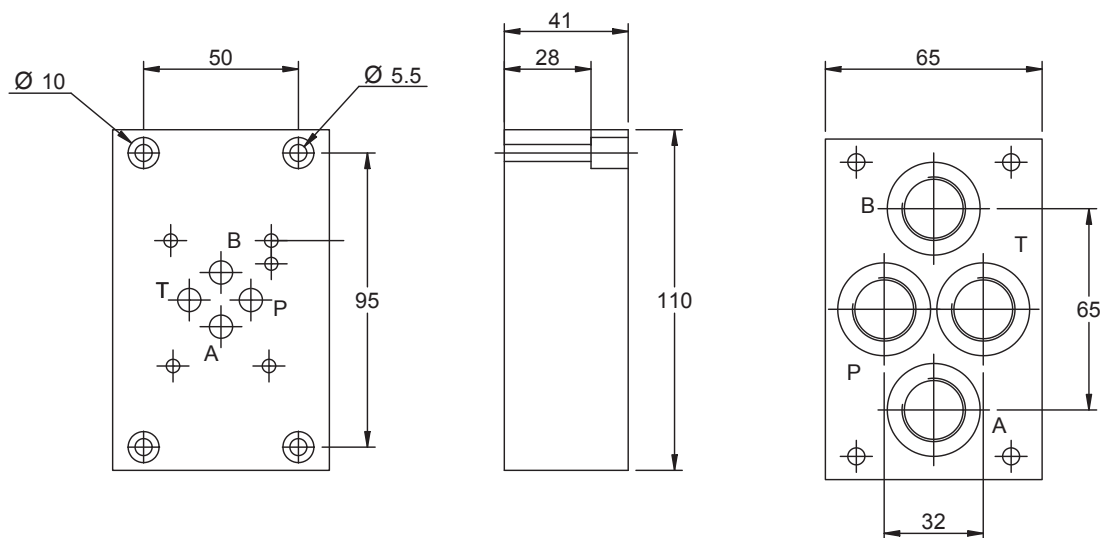
Base in alluminio
 Aluminium subplate

CETOP 3 - NG 06

A = (P - T - A - B) G1/4
 B = (P - T - A - B) G3/8

(P - T - A - B) laterali lato opposto
 On side (P - T - A - B)

BASE CON COLLEGAMENTO P - T - A - B POSTERIORE
SINGLE SUBPLATE WITH ON REAR P - T - A - B PORTS



Versione standard in ghisa
Standard type with cast iron

Pressione massima = 350 bar
Max working pressure = 350 bar

Esempio codice di ordinazione - *Ordering example*

BSG 06 # P-G

Base in ghisa
Cast iron subplates

CETOP 3 - NG 06

A = (P - T - A - B) G1/4

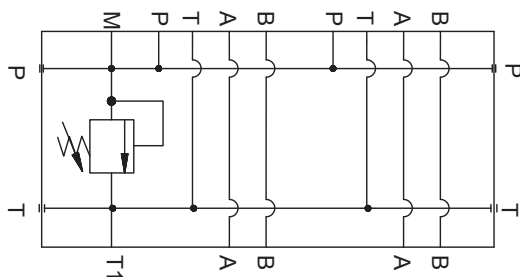
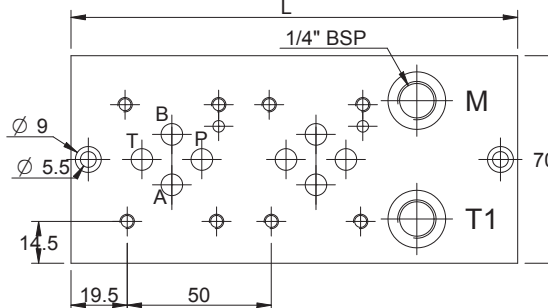
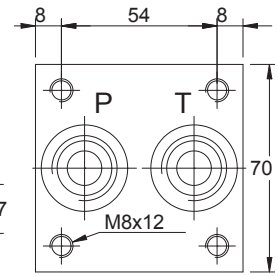
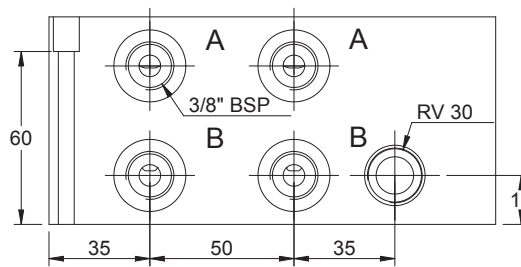
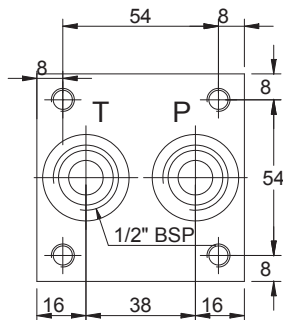
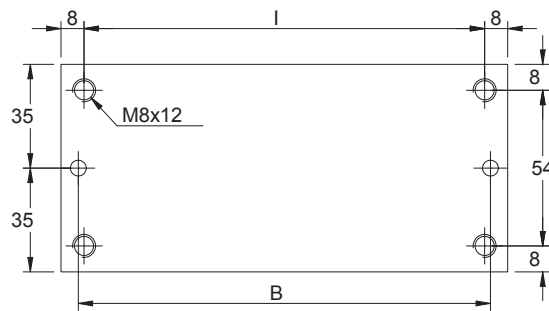
B = (P - T - A - B) G3/8

(P - T - A - B) posteriori
On rear (P - T - A - B) ports

CETOP 3 - NG 06

BLOCCO MULTIPLO ATTACCHI LATERALI COLLEGAMENTO PARALLELO
MONOBLOCK WITH ON SIDE PORTS PARALLEL CONNECTION

| Postaz. N° N° Stations | L | I | B | Kg |
|---------------------------|-----------------|-----|-----|-----|
| 2 | 155 | 139 | 143 | 2,0 |
| 3 | 205 | 189 | 193 | 2,7 |
| 4 | 255 | 239 | 243 | 3,3 |
| 5 | 305 | 289 | 293 | 4,0 |
| 6 | 355 | 339 | 343 | 4,6 |
| 7 | 405 | 389 | 393 | 5,3 |
| 8 | 455 | 439 | 443 | 6,0 |
| 9 | 505 | 489 | 493 | 6,7 |
| 10 | Special drawing | | | |



Versione standard in alluminio
 Standard type with aluminium

Pressione massima di lavoro = 250 bar
 Max working pressure = 250 bar

Caratteristiche valvola di massima
 vedere a pagina 63
 For further information regarding relief
 valve please see page 63

Esempio codice di ordinazione - Ordering example

BMA 06 P 2 L # # - #

05 = (5-50 bar)
 20 = (30-210 bar)
 35 = (100-350 bar)

Monoblocco alluminio
 Aluminium monoblock

CETOP 3 - NG 06

Collegamento in parallelo
 Parallel connection

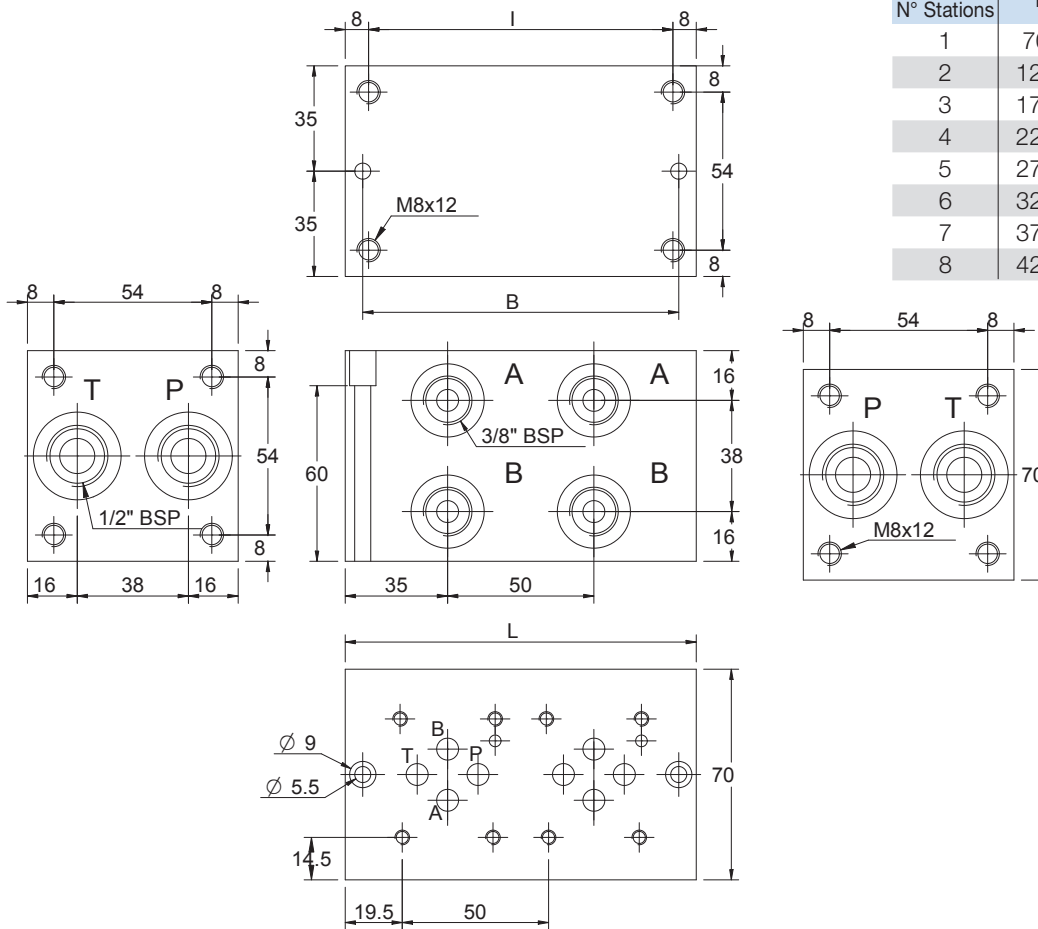
Attacchi - Ports (P - T = G1/2 A - B = G3/8)

z = predisposta per valvole
 machined for relief valve
 x = con valvola di max
 with built-in relief valve

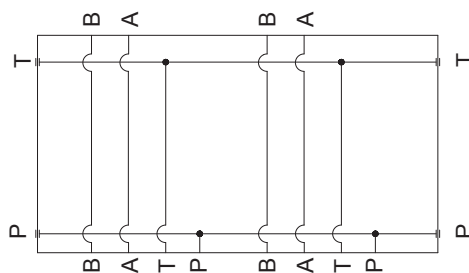
1 - 2 - 3 - 4 - 5 - 6 - 7 - 8 - 9 - 10
 Numero postazioni - Stations number

Configurazione con attacchi laterali
 On side ports

BLOCCO MULTIPLO ATTACCHI LATERALI COLLEGAMENTO PARALLELO MONOBLOCK WITH ON SIDE PORTS PARALLEL CONNECTION



| Postaz. N° N° Stations | L | I | B | Kg |
|---------------------------|-----|-----|-----|-----|
| 1 | 70 | 54 | 58 | 0,9 |
| 2 | 120 | 104 | 108 | 1,5 |
| 3 | 170 | 154 | 158 | 2,2 |
| 4 | 220 | 204 | 208 | 2,8 |
| 5 | 270 | 254 | 258 | 3,5 |
| 6 | 320 | 304 | 308 | 4,2 |
| 7 | 370 | 354 | 358 | 4,8 |
| 8 | 420 | 404 | 408 | 5,5 |



Versione standard in alluminio
Standard type with aluminium

Pressione massima di lavoro = 250 bar
Max working pressure = 250 bar

Esempio codice di ordinazione - Ordering example

BMA 06 P 2 L

Monoblocco alluminio
Aluminium monoblock

CETOP 3 - NG 06

Collegamento in parallelo
Parallel connection

Attacchi - Ports (P - T = G1/2 A - B = G3/8)

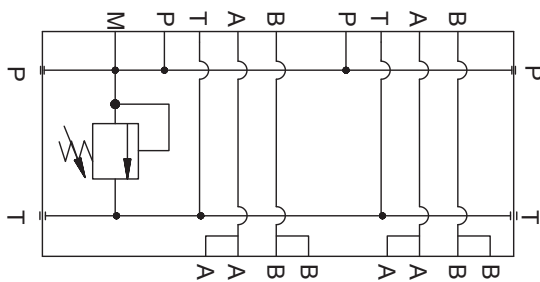
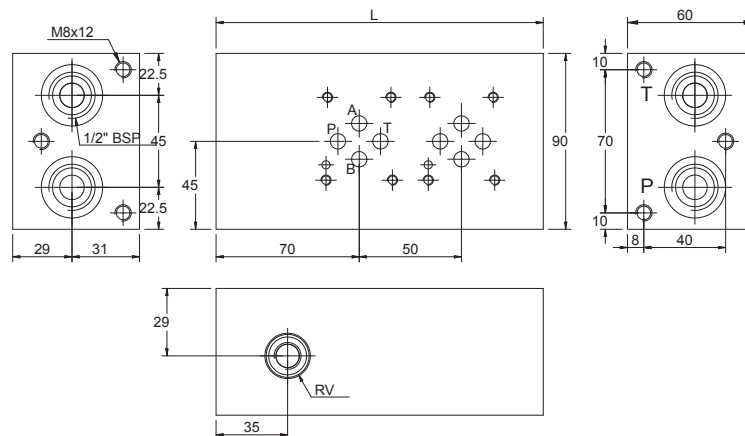
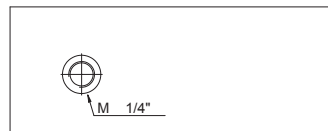
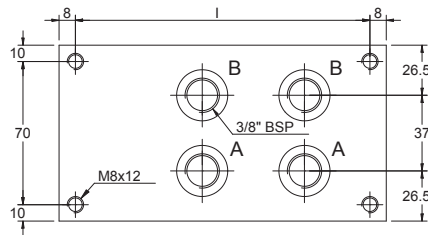
1 - 2 - 3 - 4 - 5 - 6 - 7 - 8
Numero postazioni - Stations number

Configurazione con attacchi laterali
On side ports

CETOP 3 - NG 06

BLOCCO MULTIPLO ATTACCHI POSTERIORI COLLEGAMENTO PARALLELO
MONOBLOCK WITH ON REAR PORTS PARALLEL CONNECTION

| Postaz. N° N° Stations | L | I | Kg |
|---------------------------|-----|-----|-----|
| 2 | 160 | 144 | 2,3 |
| 3 | 210 | 194 | 3,0 |
| 4 | 260 | 244 | 3,7 |
| 5 | 310 | 294 | 4,5 |
| 6 | 360 | 344 | 5,2 |
| 7 | 410 | 394 | 5,9 |
| 8 | 460 | 444 | 7,0 |



Versione standard in alluminio
Standard type with aluminium

Pressione massima di lavoro = 250 bar
Max working pressure = 250 bar

Caratteristiche valvola di massima 63
For further information regarding relief valve please see page 63

Esempio codice di ordinazione - Ordering example

BMA 06 P 2 P # # - #

05 = (5-50 bar)

20 = (30-210 bar)

35 = (100-350 bar)

Monoblocco alluminio
Aluminium monoblock

CETOP 3 - NG 06

Collegamento in parallelo
Parallel connection

Attacchi - Ports (P - T = G1/2 A - B = G3/8)

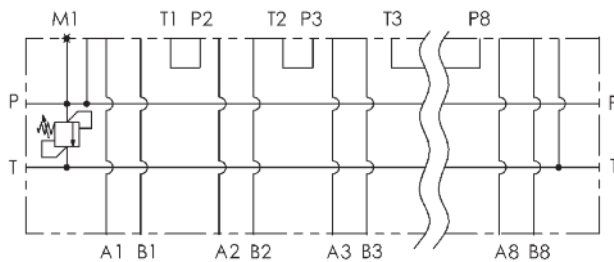
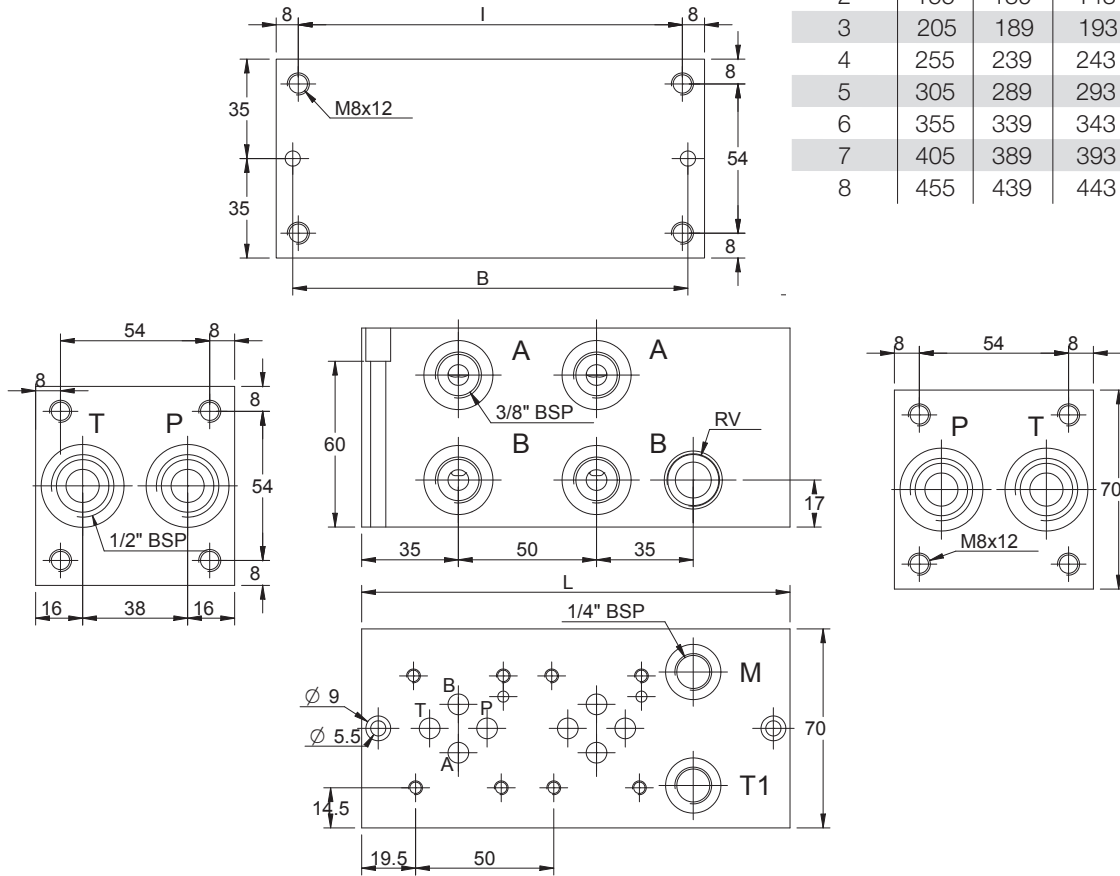
z = predisposta per valvole
machined for relief valve
x = con valvola di max
with built-in relief valve

1 - 2 - 3 - 4 - 5 - 6 - 7 - 8
Numero postazioni - Stations number

Configurazione con attacchi posteriori
On rear ports

BLOCCO MULTIPLO ATTACCHI LATERALI COLLEGAMENTO SERIE CETOP 3 - NG 06
MONOBLOCK WITH ON SIDE PORTS SERIES CONNECTION CETOP 3 - NG 06

| Postaz. N° N° Stations | L | I | B | Kg |
|---------------------------|-----|-----|-----|-----|
| 2 | 155 | 139 | 143 | 2,0 |
| 3 | 205 | 189 | 193 | 2,7 |
| 4 | 255 | 239 | 243 | 3,3 |
| 5 | 305 | 289 | 293 | 4,0 |
| 6 | 355 | 339 | 343 | 4,6 |
| 7 | 405 | 389 | 393 | 5,3 |
| 8 | 455 | 439 | 443 | 6,0 |



Versione standard in alluminio
Standard type with aluminium

Pressione massima di lavoro = 250 bar
Max working pressure = 250 bar

Caratteristiche valvola di massima vedere a pagina 63
For further information regarding relief valve please see page 63

Esempio codice di ordinazione - Ordering example

BMA 06 S 2 L # # - # — 05 = (5-50 bar)
 — 20 = (30-210 bar)
 — 35 = (100-350 bar)

Monoblocco alluminio
Aluminium monoblock

CETOP 3 - NG 06

Collegamento in serie
Series connection

Attacchi - Ports (P - T = G1/2 A - B = G3/8)

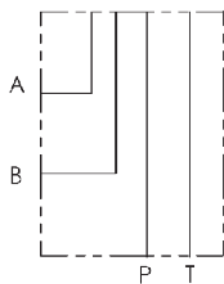
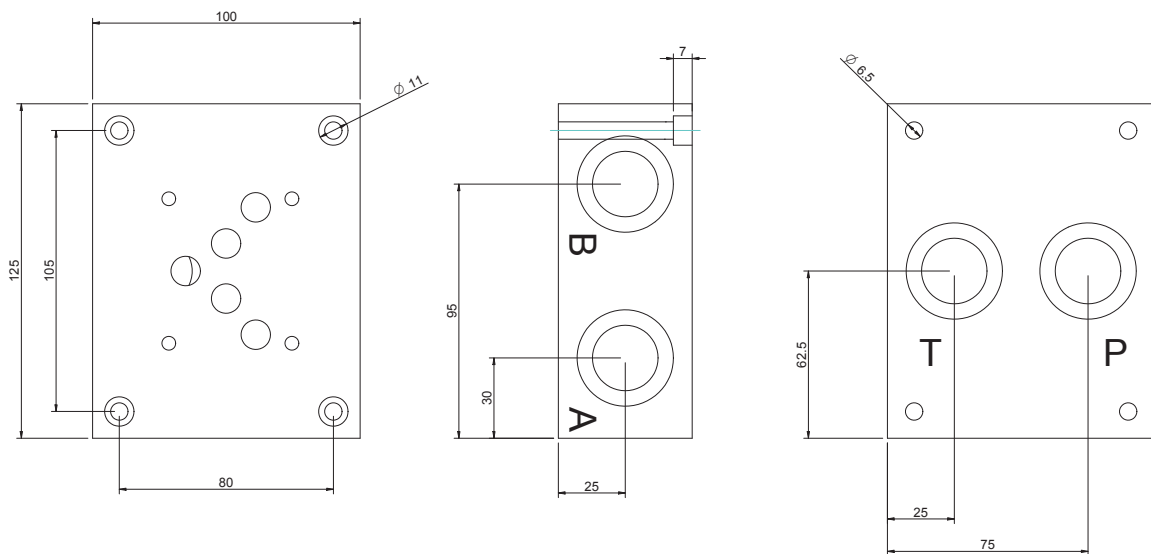
z = predisposta per valvole
machined for relief valve
x = con valvola di max
with built-in relief valve

2 - 3 - 4 - 5 - 6 - 7 - 8
Numero postazioni - Stations number

Configurazione con attacchi laterali
On side ports

CETOP 5 - NG 10

BASE CON COLLEGAMENTO P - T POSTERIORI E A - B LATERALI
SINGLE SUBPLATE ON REAR P - T AND ON SIDE A - B



Versione standard in alluminio
Standard type with aluminium

Pressione massima di lavoro = 250 bar
Max working pressure = 250 bar

Esempio codice di ordinazione - *Ordering example*

BSA 10 # PL

Monoblocco alluminio
Aluminium monoblock

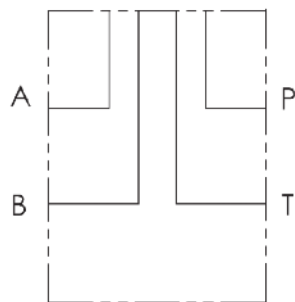
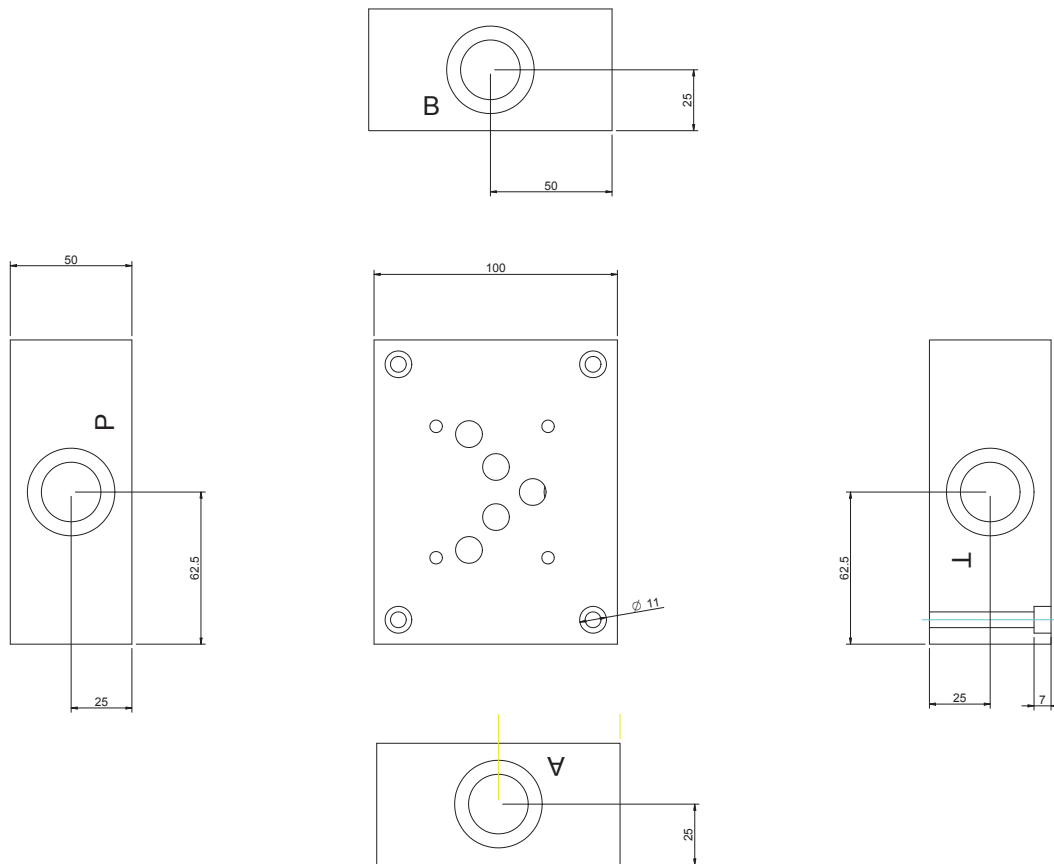
CETOP 5 - NG 10

C = (P - T - A - B) G1/2

D = (P - T - A - B) G3/4

(P - T) posteriori e (A - B) laterali
On rear (P - T) on side (A - B)

BASE CON COLLEGAMENTO P - T - A - B LATERALI A CROCE
 SINGLE SUBPLATE WITH RADIAL SIDE P - T - A - B PORTS



Versione standard in alluminio
 Standard type with aluminium

Pressione massima di lavoro = 250 bar
 Max working pressure = 250 bar

Esempio codice di ordinazione - *Ordering example*

BSA 10 # L

Monoblocco alluminio
 Aluminium monoblock

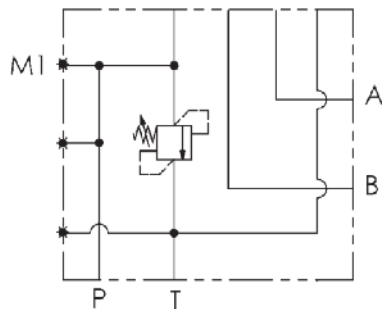
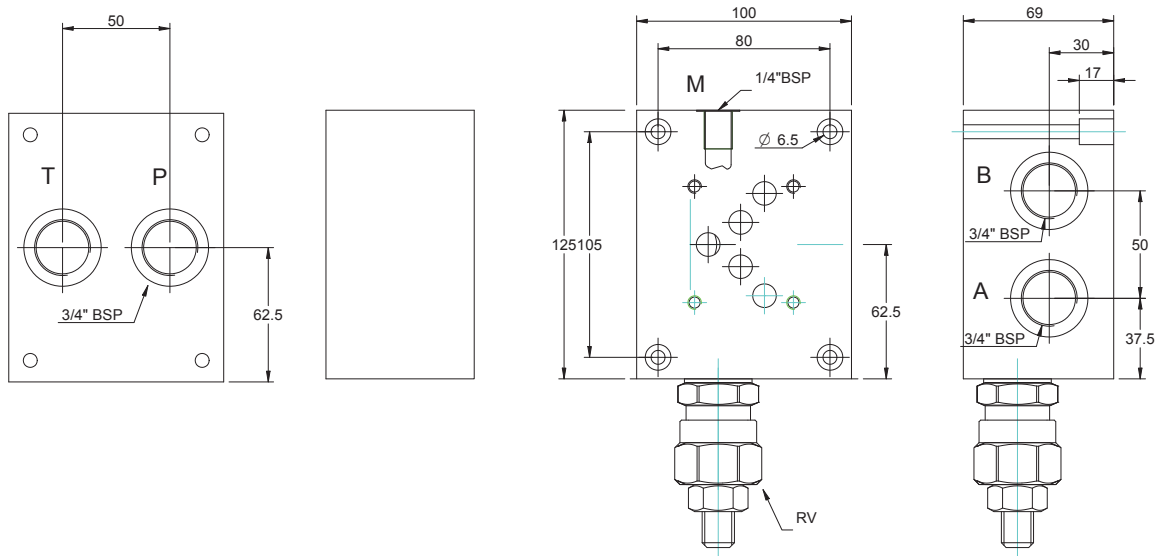
CETOP 5 - NG 10

C = (P - T - A - B) G1/2
 D = (P - T - A - B) G3/4

(P - T - A - B) laterali a croce
 Radial side (P - T - A - B) ports

CETOP 5 - NG 10

BASE CON COLLEGAMENTO P - T POSTERIORI E A - B LATERALI
SINGLE SUBPLATE ON REAR P - T AND ON SIDE A - B



Versione standard in alluminio
Standard type with aluminium

Pressione massima di lavoro = 250 bar
Max working pressure = 250 bar

Caratteristiche valvola di massima
vedere a pagina 64
For further information regarding relief
valve please see page 64

Esempio codice di ordinazione - Ordering example

BSA 10 # PL # - # ——— 10 = (35-100 bar)
20 = (80-250 bar)

Base in alluminio
Aluminium subplate

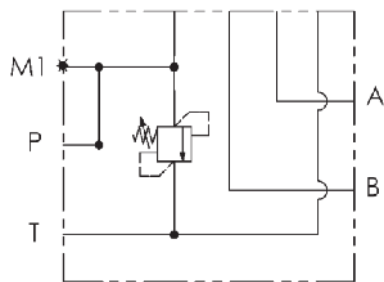
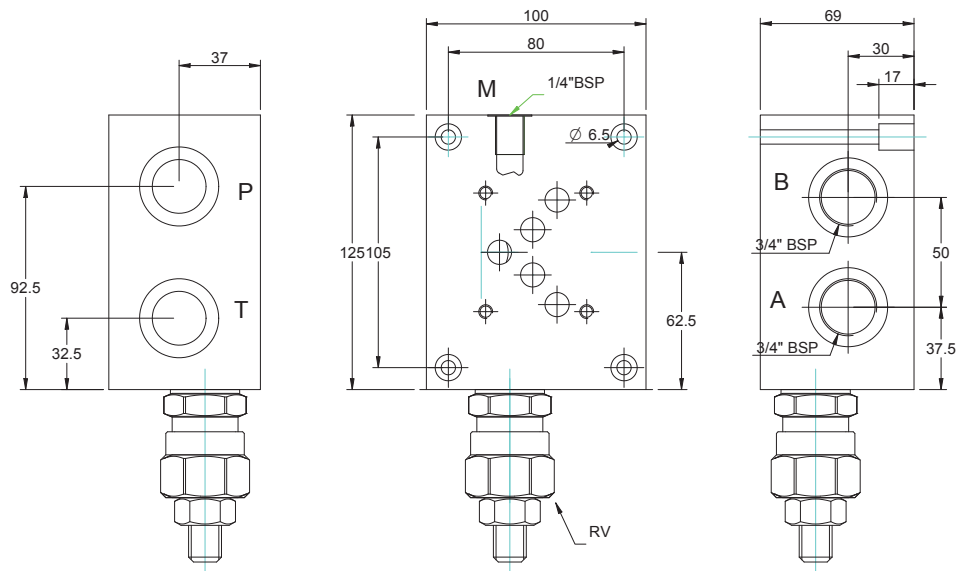
CETOP 5 - NG 10

C = (P - T - A - B) G1/2
D = (P - T - A - B) G3/4

z = predisposta per valvole
machined for relief valve
x = con valvola di max
with built-in relief valve

(P - T) posteriori e (A - B) laterali
On rear (P - T) on side (A - B)

BASE CON COLLEGAMENTO P - T - A - B LATERALI
SINGLE SUBPLATE ON SIDE P - T - A - B PORTS



Versione standard in alluminio
Standard type with aluminium

Pressione massima di lavoro = 250 bar
Max working pressure = 250 bar

Caratteristiche valvola di massima
vedere a pagina 64
For further information regarding relief
valve please see page 64

Esempio codice di ordinazione - Ordering example

BSA 10 # LL # - # — 10 = (35-100 bar)
20 = (80-250 bar)

Base in alluminio
Aluminium subplate

CETOP 5 - NG 10

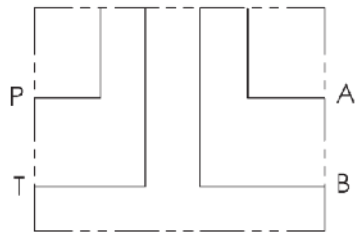
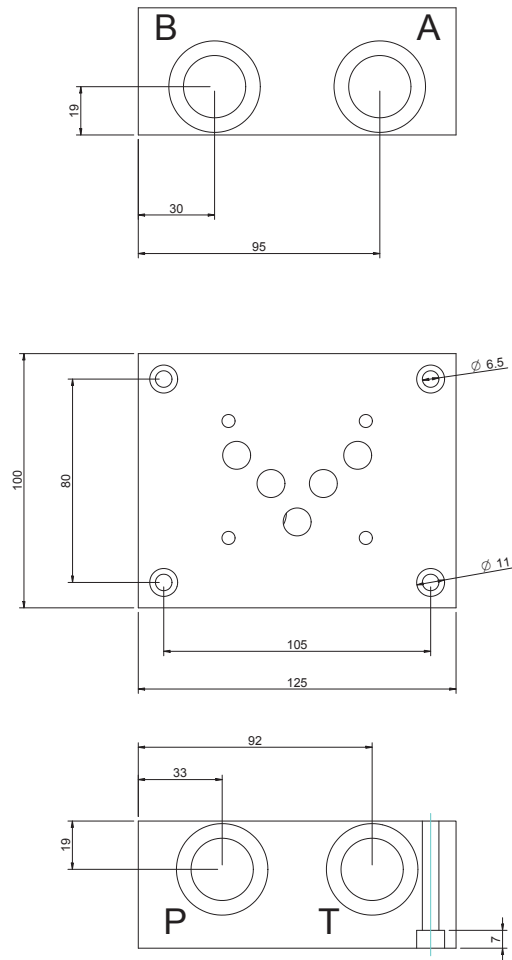
C = (P - T - A - B) G1/2
D = (P - T - A - B) G3/4

z = predisposta per valvole
machined for relief valve
x = con valvola di max
with built-in relief valve

(P - T - A - B) laterali
(P - T - A - B) on side

CETOP 5 - NG 10

BASE CON COLLEGAMENTO P - T - A - B LATERALI LATO OPPOSTO
 SINGLE SUBPLATE WITH REAR ON OPPOSITE SIDE P - T - A - B PORTS



Versione standard in alluminio
 Standard type with aluminium

Pressione massima di lavoro = 250 bar
 Max working pressure = 250 bar

Esempio codice di ordinazione - *Ordering example*

BSA 10 # LL

Base in alluminio
 Aluminium subplate

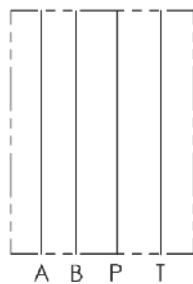
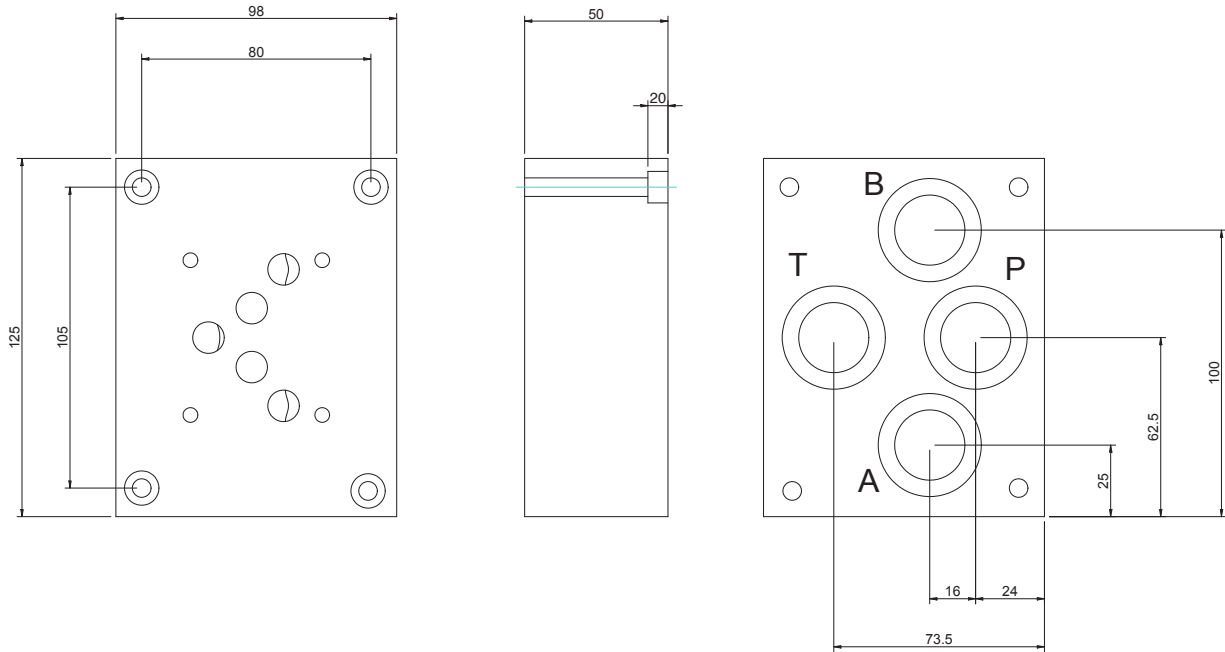
CETOP 5 - NG 10

C = (P - T - A - B) G1/2

D = (P - T - A - B) G3/4

(P - T - A - B) laterali lato opposto
 On side (P - T - A - B) ports

BASE CON COLLEGAMENTO P - T - A - B POSTERIORE
 SINGLE SUBPLATE WITH ON REAR P - T - A - B PORTS



Pressione massima = 300 bar
 Max working pressure = 300 bar

Esempio codice di ordinazione - *Ordering example*

BSG 10 D P-G

Base in ghisa
 Cast iron subplate

CETOP 5 - NG 10

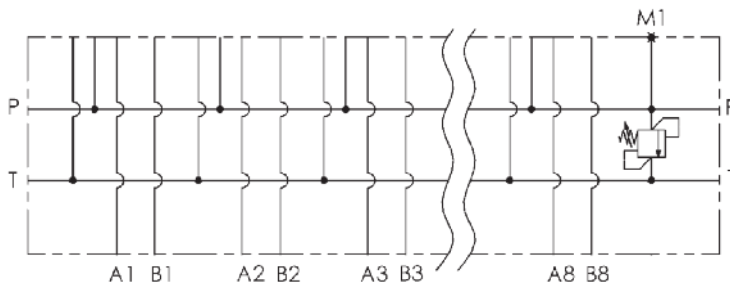
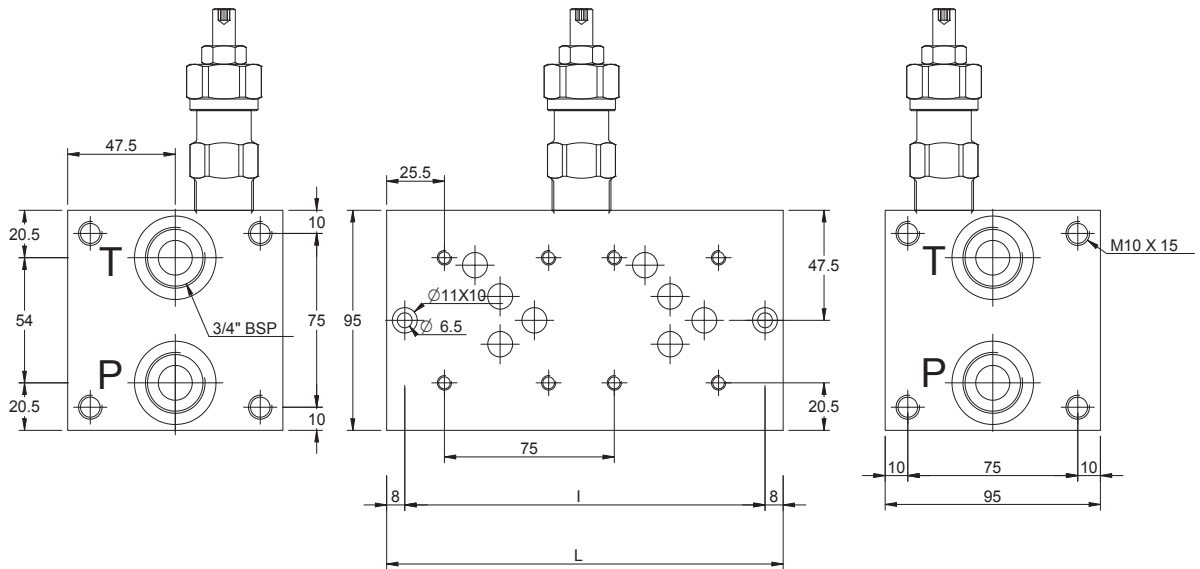
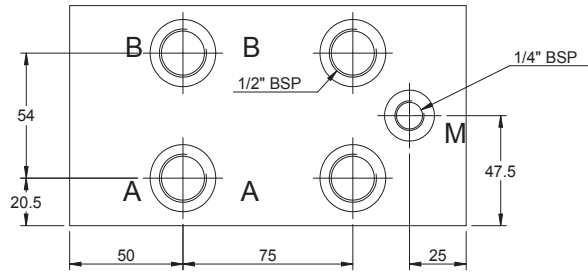
(P - T - A - B) G3/4

(P - T - A - B) posteriori
 On rear (P - T - A - B) ports

CETOP 5 - NG 10

BLOCCO MULTIPLO ATTACCHI LATERALI COLLEGAMENTO PARALLELO
MONOBLOCK WITH ON SIDE PORTS PARALLEL CONNECTION

| Postaz. N° N° Stations | L | I | Kg | |
|--------------------------------------|-----|-----|-----|----|
| solo versione 0 only version 0 | 1/0 | 100 | 84 | 6 |
| solo ver. 1 or 2 only ver. 1 or 2 | 1/1 | 140 | 124 | 9 |
| | 2 | 175 | 159 | 11 |
| | 3 | 250 | 234 | 16 |
| | 4 | 325 | 309 | 21 |
| | 5 | 400 | 384 | 26 |
| | 6 | 425 | 409 | 31 |



Versione standard in alluminio
 Standard type with aluminium

Pressione massima di lavoro = 250 bar
 Max working pressure = 250 bar

Caratteristiche valvola di massima
 vedere a pagina 64
 For further information regarding relief
 valve please see page 64

Esempio codice di ordinazione - Ordering example

BMA 10 P 3 L # # - # — 10 = (35-100 bar)
 — 20 = (80-250 bar)

Monoblocco alluminio
 Aluminium monoblock

CETOP 5 - NG 10

Collegamento in parallelo
 Parallel connection

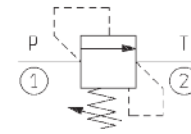
Attacchi - Ports (P - T = G3/4 A - B = G1/2)

z = predisposta per valvole
 machined for relief valve
 x = con valvola di max
 with built-in relief valve

1 - 2 - 3 - 4 - 5 - 6 - 7 - 8
 Numero postazioni - Stations number

Configurazione con attacchi laterali
 On side ports

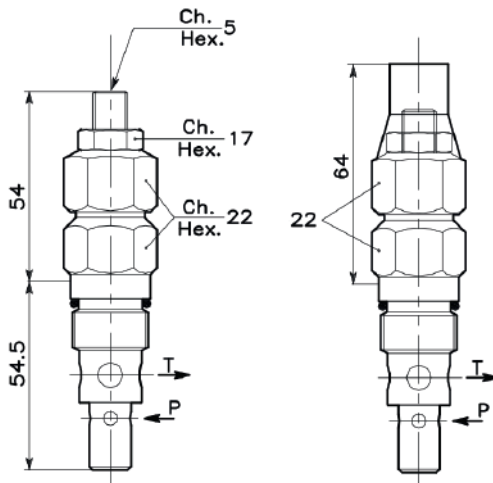
VALVOLA DI MASSIMA PRESSIONE DIRECT POPPET TYPE RELIEF



REGOLAZIONE
ADJUSTMENT

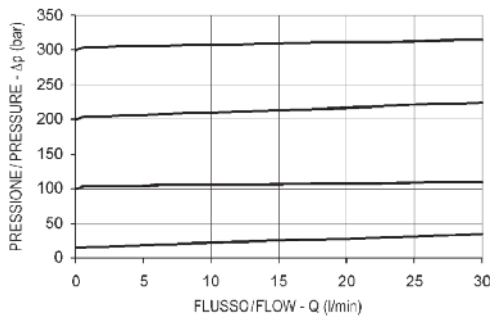
Grano
Dowel
(X)

Piombata
Sealed
(K)



DATI TECNICI / TECHNICAL DATA

| | |
|---|----------|
| Coppie di serraggio Installation torque | 46-51 Nm |
| Pressione di lavoro max Max working pressure | 350 bar |
| Portata max Max flow | 30 l/min |
| Peso Weight | 0.17 kg |



REGOLAZIONI / ADJUSTMENTS

Vite esterna
Socket screw



Piombata (plastica)
Sealed (plastic)



Esempio codice di ordinazione - *Ordering example*

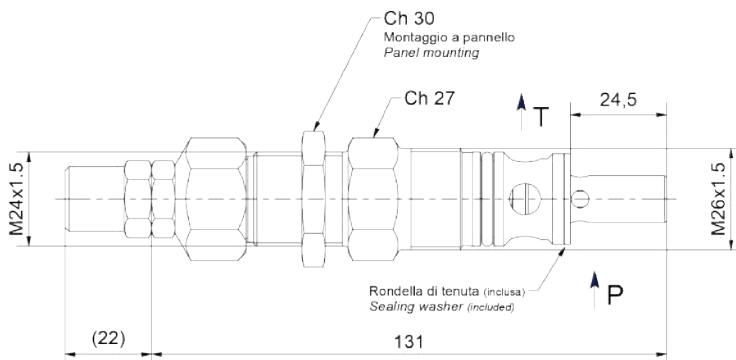
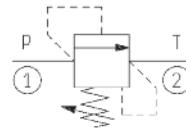
002 747 0 X 0

| Campo taratura / Setting range | | |
|--|---|---|
| 747 | 746 | 745 |
| Campo taratura 5÷100 bar (molla colore blu) Setting range 5÷100 bar (blue spring) | Campo taratura 10÷210 bar (molla colore verde) Setting range 10÷210 bar (green spring) | Campo taratura 20÷350 bar (molla colore giallo) Setting range 20÷350 bar (yellow spring) |

Regolazione
Adjustment

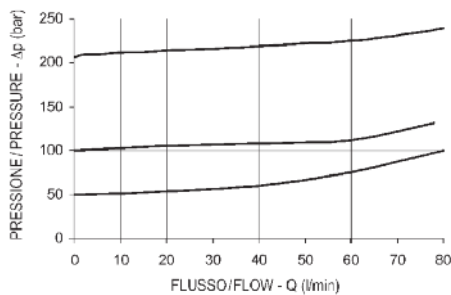
X Grano - Dowel
K Piombata - Sealed

VALVOLA DI MASSIMA PRESSIONE
DIRECT POPPET TYPE RELIEF



DATI TECNICI / TECHNICAL DATA

| | |
|---|----------|
| Coppie di serraggio Installation torque | 60-70 Nm |
| Pressione di lavoro max Max working pressure | 250 bar |
| Portata max Max flow | 80 l/min |
| Peso Weight | 0.35 kg |



REGOLAZIONI / ADJUSTMENTS

Vite esterna
Socket screw



Piombata (plastica)
Sealed (plastic)



Esempio codice di ordinazione - *Ordering example*

002 841 0 X 0

| Campo taratura / Setting range | | | |
|---|---|---|---|
| 841 | 842 | 843 | 844 |
| Campo taratura 5÷50 bar Setting range 5÷50 bar | Campo taratura 10÷100 bar Setting range 10÷100 bar | Campo taratura 15÷150 bar Setting range 15÷150 bar | Campo taratura 25÷250 bar Setting range 25÷250 bar |

Regolazione
Adjustment

X Grano - Dowel

K Piombata - Sealed



MANAGEMENT SYSTEM CERTIFICATE

Certificate no.:
68359-2009-AQ-ITA-SINCERT

Initial certification date:
30 October 2009

Valid:
31 October 2021 – 30 October 2024

This is to certify that the management system of
OMT Group S.p.A. - Sede Legale e Operativa
Via Lombardia, 14 - 24040 Calvenzano (BG) - Italy

has been found to conform to the Quality Management System standard:
ISO 9001:2015

This certificate is valid for the following scope:
Design and manufacture of Heat Exchangers, components for hydraulic applications, pressure bladder and piston accumulators and industrial systems for large volume accumulators. Design, manufacture and marketing of hydraulic valves and related integrated groups.
(IAF: 18, 17)

Place and date:
Vimercate (MB), 14 February 2022



ISO 9001:2015 A
ISO 9001:2015 B
ISO 9001:2015 C
ISO 9001:2015 D
ISO 9001:2015 E
ISO 9001:2015 F
ISO 9001:2015 G
ISO 9001:2015 H
ISO 9001:2015 I
ISO 9001:2015 J
ISO 9001:2015 K
ISO 9001:2015 L
ISO 9001:2015 M
ISO 9001:2015 N
ISO 9001:2015 O
ISO 9001:2015 P
ISO 9001:2015 Q
ISO 9001:2015 R
ISO 9001:2015 S
ISO 9001:2015 T
ISO 9001:2015 U
ISO 9001:2015 V
ISO 9001:2015 W
ISO 9001:2015 X
ISO 9001:2015 Y
ISO 9001:2015 Z

Numero di riferimento per gli interventi di accreditamento:
D02, D04, D06, D08, D10, D12, D14, D16, D18, D20, D22, D24, D26, D28, D30, D32, D34, D36, D38, D40, D42, D44, D46, D48, D50, D52, D54, D56, D58, D60, D62, D64, D66, D68, D70, D72, D74, D76, D78, D80, D82, D84, D86, D88, D90, D92, D94, D96, D98, D100

For the issuing office:
DNV - Business Assurance
Via Energy Park, 14 - 20871 Vimercate (MB) - Italy

Claudia Baroncini

Claudia Baroncini
Management Representative

Lack of fulfillment of conditions as set out in the Certification Agreement may render this Certificate invalid.
ACCREDITED UNIT: DNV Business Assurance Italy S.r.l., Via Energy Park, 14 - 20871 Vimercate (MB) - Italy - TEL: +39 69 99 905. www.dnv.it

SISTEMA DI GESTIONE QUALITÀ QUALITY MANAGEMENT SYSTEM

Stante il continuo miglioramento dei nostri prodotti, è possibile che il catalogo subisca delle modifiche anche senza il preavviso delle stesse. Si suggerisce vivamente di verificare il contenuto dei cataloghi. Per avere la certezza di essere in possesso dell'ultima versione visita il sito: www.omtgroup.it/cataloghi
Questa versione annulla e sostituisce le precedenti.

Given the continuous improvement of our products, it is possible that the catalog undergoes changes even without prior notice.
It is strongly recommended that you check the contents of the catalogs. To be sure of being in possession of the latest version, visit the website: www.omtgroup.it/en/catalogs
This version cancels and replaces the previous ones.





OMT Group S.p.A.
Via Lombardia, 14
24040 Calvenzano (BG) - Italy
Tel.: +39 0363 86.03.11
Fax: +39 0363 33.56.20

 www.omtgroup.it

 omtgroup@omtgroup.it

    OMT Group

